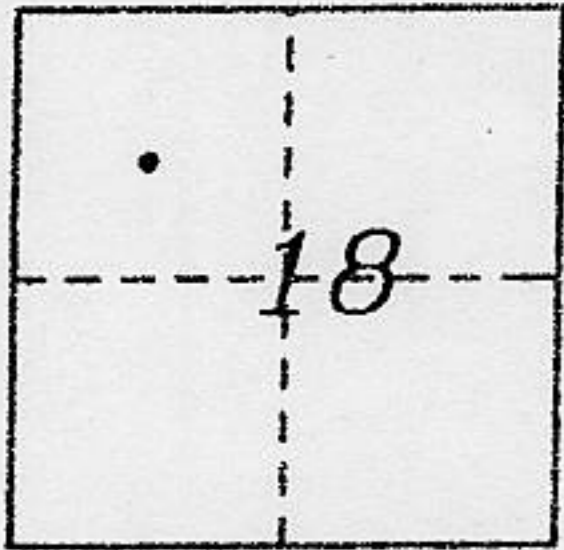


CORNER RECORD

COUNTY OF PLACER, CALIFORNIA

City of \_\_\_\_\_ Document Number \_\_\_\_\_

Brief Legal Description LOT 98, TAHOE TAVERN HEIGHTS ADDN.# 3, H MAPS 44



T.15N., R.17E., CORNER TYPE

COORDINATES (Optional)

Government Corner  Control  N. \_\_\_\_\_  
 Meander  Property  E. \_\_\_\_\_  
 Rancho  Other  Zone \_\_\_\_\_ Datum \_\_\_\_\_  
 Date of Survey May 2003 Elev. \_\_\_\_\_

Corner- Left as found  Found and tagged  Established  Reestablished  Rebuilt

Identification and type of corner found: Evidence used to identify or procedure used to establish or reestablish corner:

set 5/8" rebar with aluminum cap stamped TAHOE BASIN LAND SURVEYING

THOMAS C. BUSWELL, CA.PLS 5886

A description of the physical condition of the monument as found and as set or reset: \_\_\_\_\_

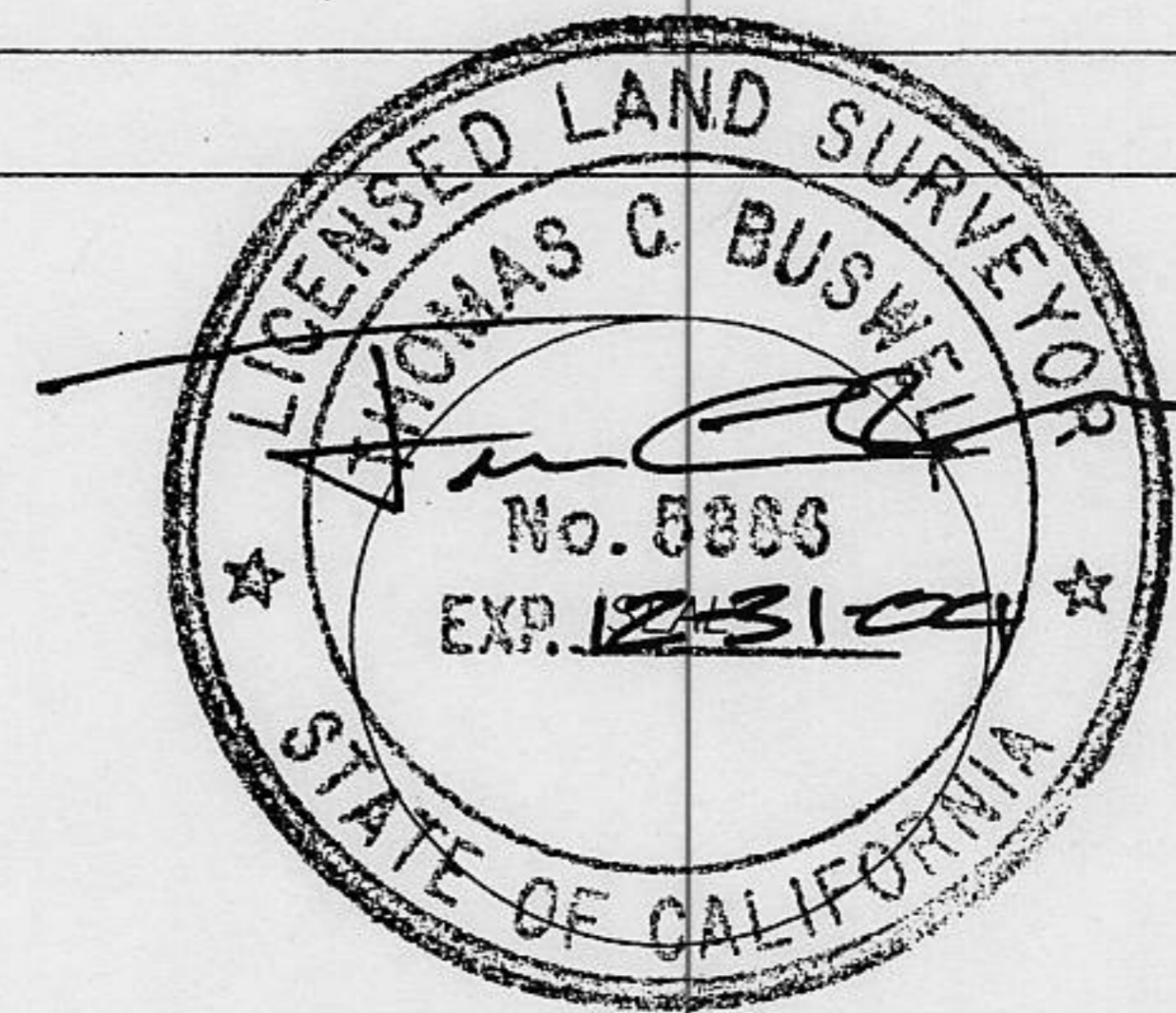
● ~ found monument as noted

SURVEYOR'S STATEMENT

This Corner Record was prepared by me or under my direction in conformance with the Land

Surveyor's Act on August 2003

Signed [Signature] L.S. or R.C.E. Number 5886  
Thomas C. Buswell, PLS



COUNTY SURVEYOR'S STATEMENT

This Corner Record was Received NOV. 12 2003 and Examined

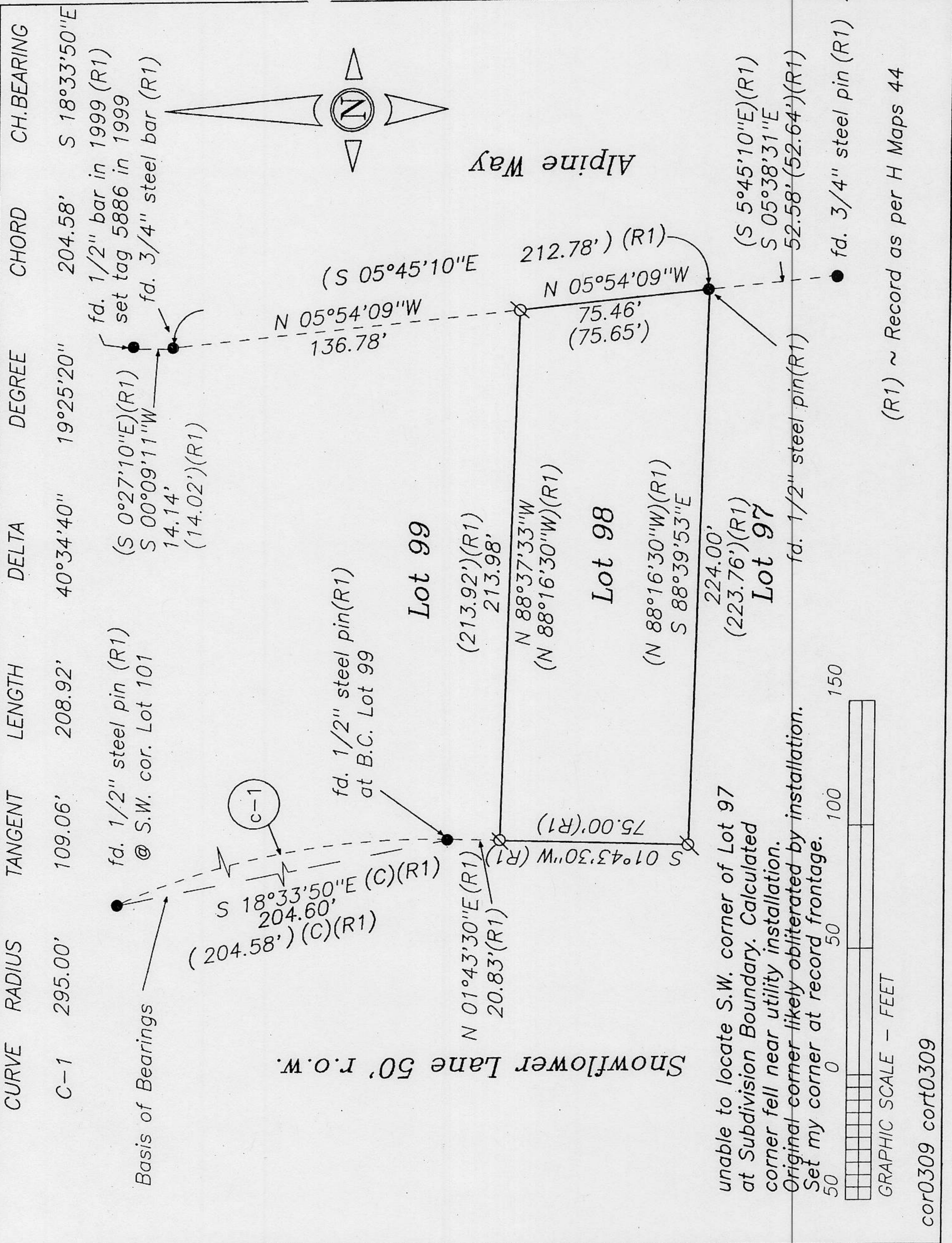
and filed NOV. 24 2003

Signed Charles B. Grant Title DEPUTY COUNTY  
LS 6158 SURVEYOR



County Surveyor's Comment \_\_\_\_\_

BOOK 8 CORNER RECORDS PAGE 74



(R1) ~ Record as per H Maps 44

cor0309 cort0309