

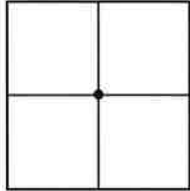
CORNER RECORD

Agency Index BK 24 PG 39

Document Number 20210004

City of _____ County of Placer, California

Brief Legal Description MONUMENTS AS SHOWN ON 29-PM-75, P.C.R.



SEC 7
T 10 N
R 6 E

CORNER TYPE

- Government Corner Control
 Meander Property
 Rancho Other

Date of Survey JANUARY 21, 2021

COORDINATES (Optional)

N. _____ E. _____

Elevation _____

Units Metric U.S. Survey Foot

Horizontal Datum _____

Zone _____ Epoch Date _____

Vertical Datum _____

Complies with Public Resources Code §§8801-8819

Complies with Public Resources Code §§8890-8902

PLS Act Ref.: 8765(d) 8771 8773 Other:

Corner/Monument: Left as found Established Rebuilt Pre-Construction
 Found and tagged Reestablished Referenced Post-Construction

Narrative of corner identified and monument as found, set, reset, replaced, or removed:

See sheet #2 for description(s):

FOUND MONUMENTS, PER PARCEL MAP NO. P-75653, RECORDED IN BOOK 29 OF PARCEL MAPS, PAGE 75, P.C.R.; TIED FOUND MONUMENTS TO SET/FOUND REFERENCE MONUMENTS PRIOR TO NEW CONSTRUCTION; FROM REFERENCE POINTS, SET MONUMENTS AS SHOWN POST CONSTRUCTION.

SURVEYOR'S STATEMENT

This Corner Record was prepared by me or under my direction in conformance with the Professional Land Surveyors' Act on MARCH 15, 2022.
 Signed [Signature] P.L.S. or R.C.E. No. 7941

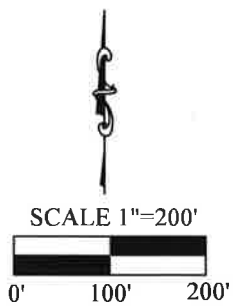
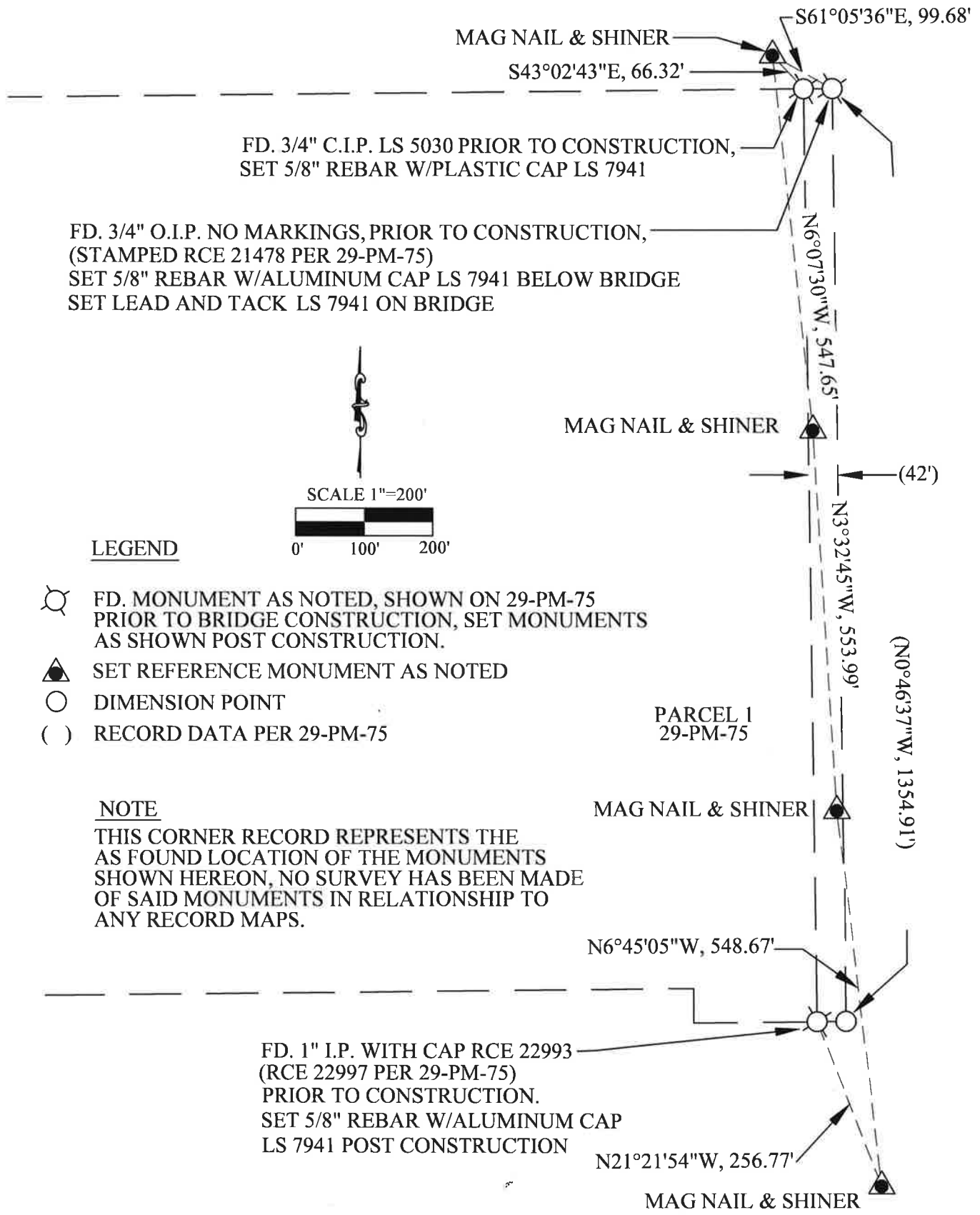


COUNTY SURVEYOR'S STATEMENT

This Corner Record was received MARCH 17, 2022 and examined and filed MARCH 21, 2022.
 Signed [Signature] P.L.S. or R.C.E. No. 8373
 Title DEPUTY COUNTY SURVEYOR



County Surveyor's Comment



LEGEND

- FD. MONUMENT AS NOTED, SHOWN ON 29-PM-75 PRIOR TO BRIDGE CONSTRUCTION, SET MONUMENTS AS SHOWN POST CONSTRUCTION.
- SET REFERENCE MONUMENT AS NOTED
- DIMENSION POINT
- RECORD DATA PER 29-PM-75

NOTE

THIS CORNER RECORD REPRESENTS THE AS FOUND LOCATION OF THE MONUMENTS SHOWN HEREON, NO SURVEY HAS BEEN MADE OF SAID MONUMENTS IN RELATIONSHIP TO ANY RECORD MAPS.