

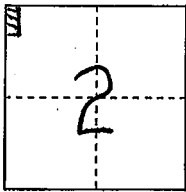
CORNER RECORD

COUNTY OF PLACER, CALIFORNIA

City of COLFAX

Document Number 20090012

Brief Legal Description CALIFORNIA DIVISION of HIGHWAYS R/W MAP, III, PLA, 37, SHEET 2 of 14, JUNE 4, 1956



S. 2

T. 14 N.

R. 9 E.

CORNER TYPE

Government Corner

Meander

Rancho

Date of Survey \_\_\_\_\_

Control

Property

Other

COORDINATES

(Optional)

N. \_\_\_\_\_

E. \_\_\_\_\_

Zone \_\_\_\_\_ Datum \_\_\_\_\_

Elev. \_\_\_\_\_

Corner--- Left as found  Found and tagged  Established  Reestablished  Rebuilt

Identification and type of corner found: Evidence used to identify or procedure used to establish or reestablish corner: FOUND 6"x6" CONC. HIGHWAY R/W MONUMENTS PER CALIFORNIA DIVISION of HIGHWAYS R/W MAP, III, PLA, 37, SHEET 2 of 14, DATED JUNE 4, 1956, ON FILE W/ PLACER COUNTY SURVEYOR. MONUMENTS FOUND AT RECORD LOCATION, WITH NOTED DISCREPANCIES.

A description of the physical condition of the monument as found and as set or reset: REESTABLISHED HIGHWAY R/W FROM FOUND MONUMENTS AT STATION "C"+88.40, 114.90 (R) & "C"+89.92 130' (R) SET 3/4" REBAR W/ COPPER COLLAR STAMPED "PLACER COUNTY SURVEYOR". AT STATION "C"+50 130' (R) SET R&R SPIKES STAMPED LS 7887 OFF-SET 40.0' & 50.0' WESTEALY & PERPENDICULAR TO R/W

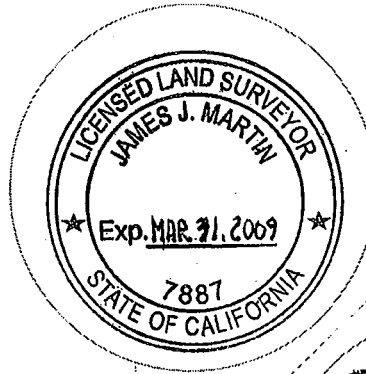
SURVEYOR'S STATEMENT

This Corner Record was prepared by me or under my direction in conformance with the Professional Land Surveyors' Act

on JANUARY 20 2009

Signed [Signature]

L.S. or R.C.E. Number 7887 Expiration Date MAR. 31, 2009



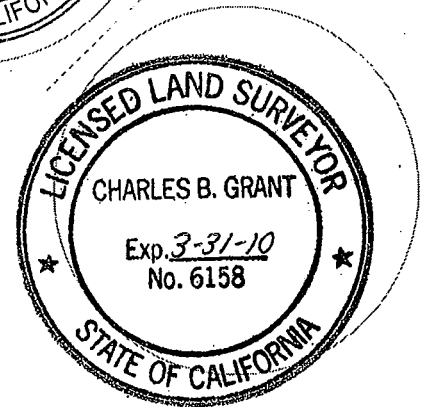
COUNTY SURVEYOR'S STATEMENT

This Corner Record was received \_\_\_\_\_ 20 \_\_\_\_\_

and examined and filed MARCH 18 2009

Signed Charles B. Grant Title COUNTY SURVEYOR

L.S. or R.C.E. Number 6158 Expiration Date 3-31-10

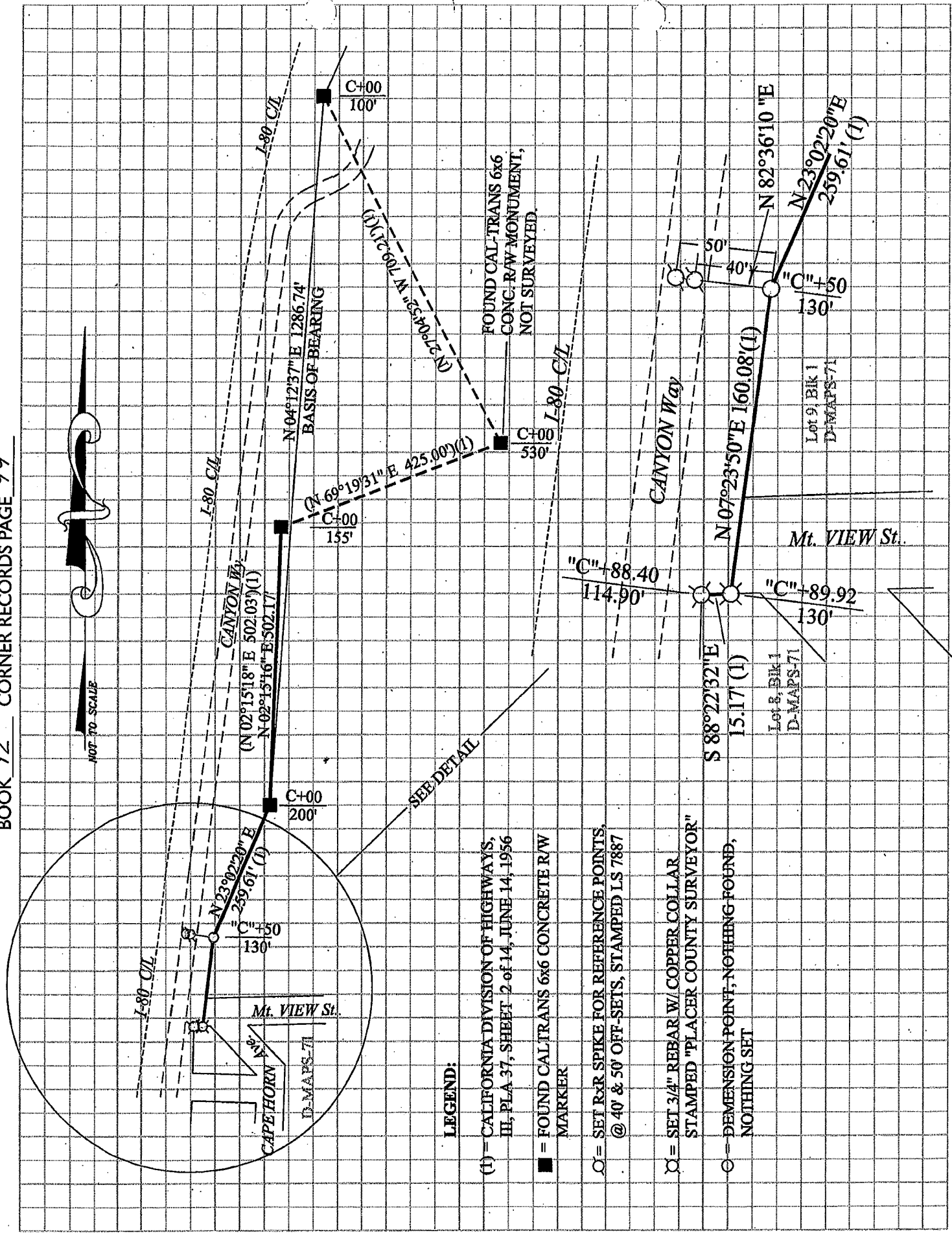


County Surveyor's Comment \_\_\_\_\_

BOOK 12 CORNER RECORDS PAGE 99



NOT TO SCALE



SEE DETAIL

**LEGEND:**

(1) = CALIFORNIA DIVISION OF HIGHWAYS, III, PLA 37, SHEET 2 of 14, JUNE 14, 1956

■ = FOUND CAL TRANS 6x6 CONCRETE R/W MARKER

○ = SET R x R SPIKE FOR REFERENCE POINTS, @ 40' & 50' OFF SETS, STAMPED LS 7887

⊗ = SET 3/4" REBAR W/ COPPER COLLAR STAMPED "PLACER COUNTY SURVEYOR"

○ = DIMENSION POINT, NOTHING FOUND, NOTHING SET