

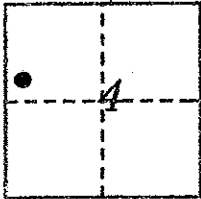
CORNER RECORD

COUNTY OF PLACER, CALIFORNIA

City of _____

Document Number 200700012

Brief Legal Description LOT 79, ALPINE MEADOWS ESTATES UNIT NO.3 H MAPS16



T.15N., R.16E
M.D.B. & M.

CORNER TYPE

Government Corner Control
Meander Property
Rancho Other
Date of Survey AUGUST 2007

COORDINATES
(Optional)

N. _____
E. _____
Zone _____ Datum _____
Elev. _____

Corner— Left as found Found and tagged Established Reestablished Rebuilt

Identification and type of corner found; Evidence used to identify or procedure used to establish or reestablish corner:

• ~ FD. MONUMENTS AND RECORD DATA PER H MAPS 16 AS INDICATED
ON ACCOMPANYING PLAT

A description of the physical condition of the monument as found and as set or reset:

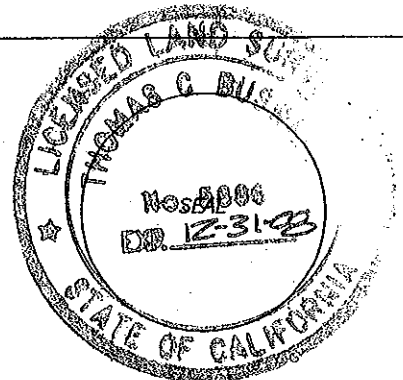
• ~ set 5/8" rebar with 2" aluminum cap
stamped "TAHOE BASIN LAND SURVEYING,
THOMAS C. BUSWELL, LS 5886".

SURVEYOR'S STATEMENT

This Corner Record was prepared by me or under my direction in conformance with the Land

Surveyor's Act on SEPTEMBER 2007

Signed [Signature] L.S. or R.C.E. Number 5886
Thomas C. Buswell, PLS



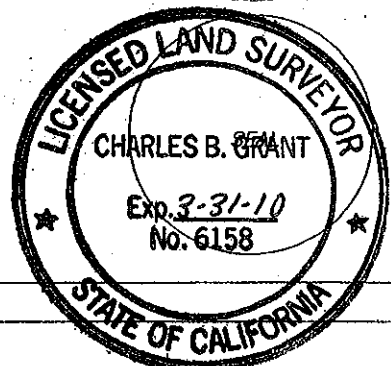
COUNTY SURVEYOR'S STATEMENT

This Corner Record was Received _____ 20____ and Examined

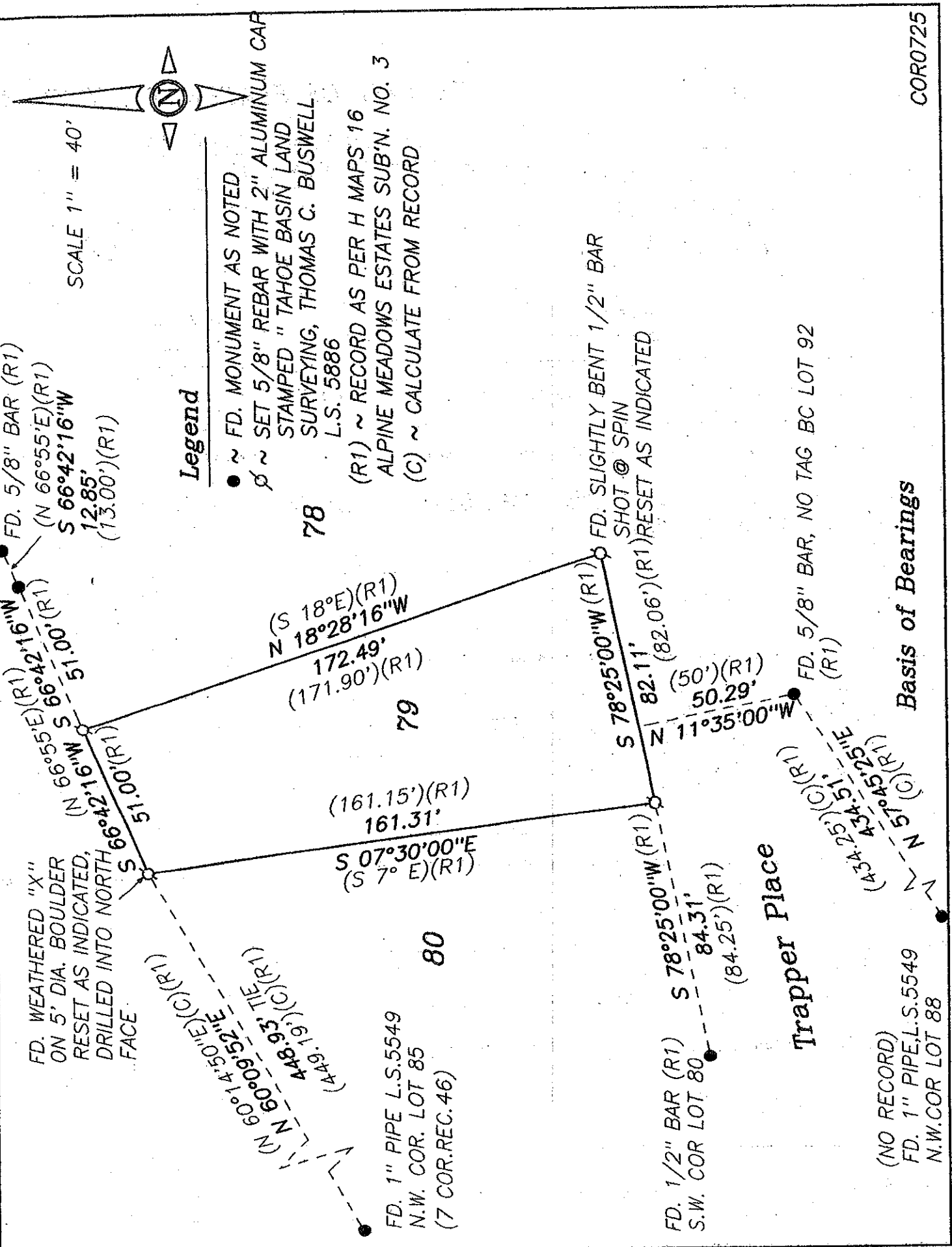
and filed MARCH 28 2008

Signed [Signature] Title DEPUTY COUNTY SURVEYOR
LS 6158 LICENSE EXPIRES 3-31-10

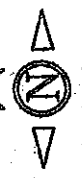
County Surveyor's Comment _____



BOOK 12 CORNER RECORDS PAGE 4



SCALE 1" = 40'



Legend

- ~ FD. MONUMENT AS NOTED
- ∅ ~ SET 5/8" REBAR WITH 2" ALUMINUM CAP STAMPED "TAHOE BASIN LAND SURVEYING, THOMAS C. BUSWELL L.S. 5886
- (R1) ~ RECORD AS PER H MAPS 16 ALPINE MEADOWS ESTATES SUB'N. NO. 3
- (C) ~ CALCULATE FROM RECORD

78

79

80

FD. WEATHERED "X" ON 5' DIA. BOULDER RESET AS INDICATED, DRILLED INTO NORTH FACE

FD. 5/8" BAR (R1)
(N 66°55'E)(R1)
S 66°42'16"W
12.85'
(13.00')(R1)

(N 66°55'E)(R1)
S 66°42'16"W
51.00'(R1)

(N 60°14'50"E)(C)(R1)
(N 60°09'32"E)(R1)
449.19'(C)(R1)
449.19'(C)(R1)

(161.15')(R1)
161.31'
S 07°30'00"E
(S 7° E)(R1)

(S 18°E)(R1)
N 18°28'16"W
172.49'
(171.90')(R1)

FD. 1" PIPE L.S.5549
N.W. COR. LOT 85
(7 COR.REC.46)

FD. SLIGHTLY BENT 1/2" BAR SHOT @ SPIN
(R1) RESET AS INDICATED

S 78°25'00"W (R1)
N 82.11'
(82.06')(R1)

FD. 1/2" BAR (R1)
S.W. COR LOT 80
S 78°25'00"W (R1)
84.31'
(84.25')(R1)

Trapper Place

FD. 5/8" BAR, NO TAG BC LOT 92 (R1)

(A34.225)(C)(R1)
N 51°45'25"E
51'(C)(R1)

(NO RECORD)
FD. 1" PIPE, L.S.5549
N.W. COR LOT 88

Basis of Bearings