

CORNER RECORD

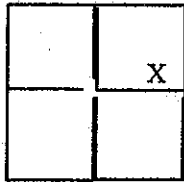
Document Number 20070017

City of _____

County of Placer, California

Brief Legal Description N1/2 of E1/2 of S1/2 of SE1/4 of NW1/4 of Section 11, Township 11 North, Range 7 East, M.D.M.

Unincorporated Territory of Placer County, California



Sec. 11

T11N

R7E

CORNER TYPE

Government Corner Control
 Meander Property
 Rancho Other

Date of Survey 5 October 2007

COORDINATES(Optional)

N. _____
 E. _____
 Zone _____ NAD27 NAD83
 NAD83 Epoch _____
 Elevation _____
 Vert. Datum: NGVD29 NAV88
 Meas. Units: Metric Imperial

Corner - Left as found Found and tagged Established Reestablished Rebuilt

Identification and type of corner found: Evidence used to identify or procedure used to establish or reestablish the corner:

Found Copperweld Monument at Center of Section 11, T11N-R7E, M.D.M. and 1/2 pin LS2515 per 4 Surveys 19 O.R.P.C.

A description of the physical condition of the monument as found and as set or reset: Reset Southeast, Southwest and Northwest corners of the N11/2 of E1/2 of S1/2 of SE1/4 of NW1/4 Sec. 11, T11N-R7E, M.D.M. per 4 Parcel Maps 118 O.R.P.C. Southeast corner is a 5/8 bar with aluminum cap LS 3639. The Southwest corner is a spindle with LS 3639 washer in pavement. The Northwest corner if a foundation nail and LS 3639 tag in a 8" x 8" corner post.

SURVEYOR'S STATEMENT

This Corner Record was prepared by me or under my direction in conformance with

the Land Surveyor's Act on 5 October 2007

Signed Ralph Miller P.L.S. or R.C.E. Number LS 3639



COUNTY SURVEYOR'S STATEMENT

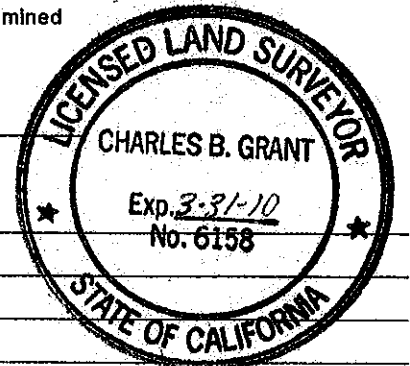
This Corner Record was received _____ and examined _____

and filed MARCH 28 2008

Signed Charles B. Grant P.L.S. or R.C.E. Number 6158

Title DEPUTY COUNTY SURVEYOR LICENSE EXPIRES 3-31-10

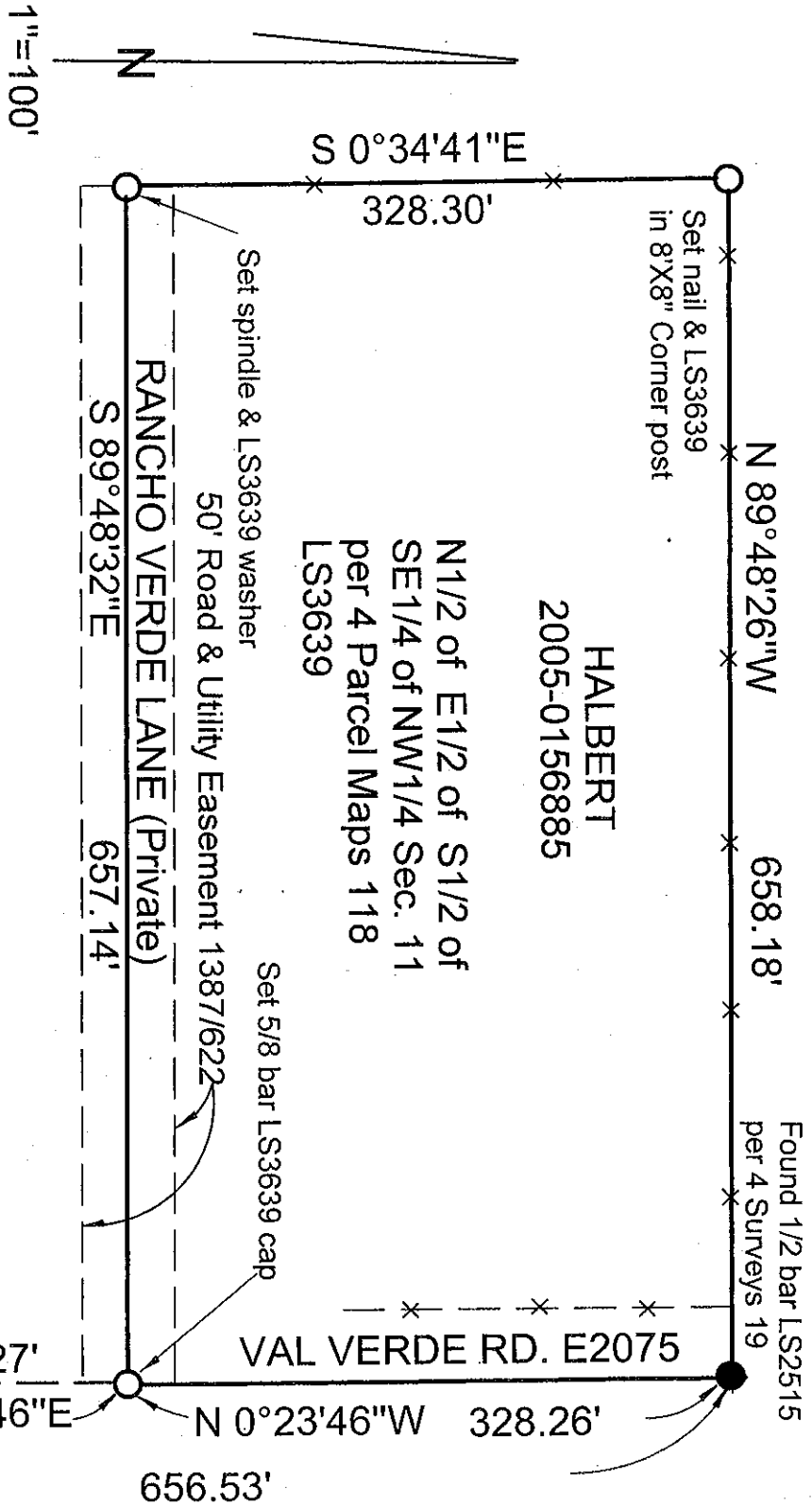
County Surveyor's Comment _____



BOOK 12 CORNER RECORDS PAGE 8

SKETCH FOR CORNER RECORD
 N1/2 of E1/2 of S1/2 of SE1/4 of
 NW1/4 of Sec. 11, T11N-R7E, M.D.M.
 Unincorporated Territory Placer County
 Ralph Miller LS 3639 October 2007

Found Copperweld Monument
 Center of Section 11 per
 4 Surveys 19 - per LS2515
 6" below surface East side
 Val Verde Road



8 E964 RECORDS REWIND 21 X008