

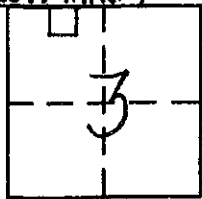
CORNER RECORD

COUNTY OF PLACER, CALIFORNIA

City of _____ Document Number _____

Brief Legal Description RECORD of SURVEY No. 1306 11-ROS-14

SEC 33 T.11N. 1



N.W. Cor. Sec 3
T.11N.
R.7E.
M.D.M.

CORNER TYPE

Government Corner Control
Meander Property
Rancho Other
Date of Survey Dec 8, 2006

COORDINATES (Optional)

N. _____
E. _____
Zone _____ Datum _____
Elev. _____

Corner — Left as found Found and tagged Established Reestablished Rebuilt

Identification and type of corner found: Evidence used to identify or procedure used to establish or reestablish corner:

FOUND MONUMENTS AS SHOWN IN TRAVELED WAY OF OLIVE RANCH ROAD
PER RECORD of SURVEY No. 1306 AT BOOK 11 of SURVEYS, PAGE 14 O.R.P.C.
FROM FOUND MONUMENTS ESTABLISHED REFERENCE POINTS PRIOR TO
ASPHALT OVERLAY.

A description of the physical condition of the monument as found and as set or reset:

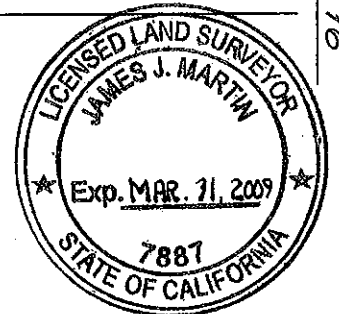
FROM REFERENCE POINTS SET MAG-NAIL WITH 1/4" BRASS TAG STAMPED
"PLACER CO SURVEYOR" CENTERED OVER FOUND MONUMENTS AFTER
ASPHALT OVERLAY

SURVEYOR'S STATEMENT

This Corner Record was prepared by me or under my direction in conformance with the Land

Surveyors' Act on APRIL 15 20 08.

Signed [Signature] L.S. or R.C.E. Number L.S. 7887

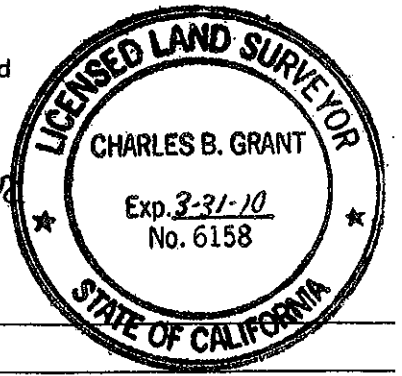


COUNTY SURVEYOR'S STATEMENT

This Corner Record was received _____ 20 _____ and examined

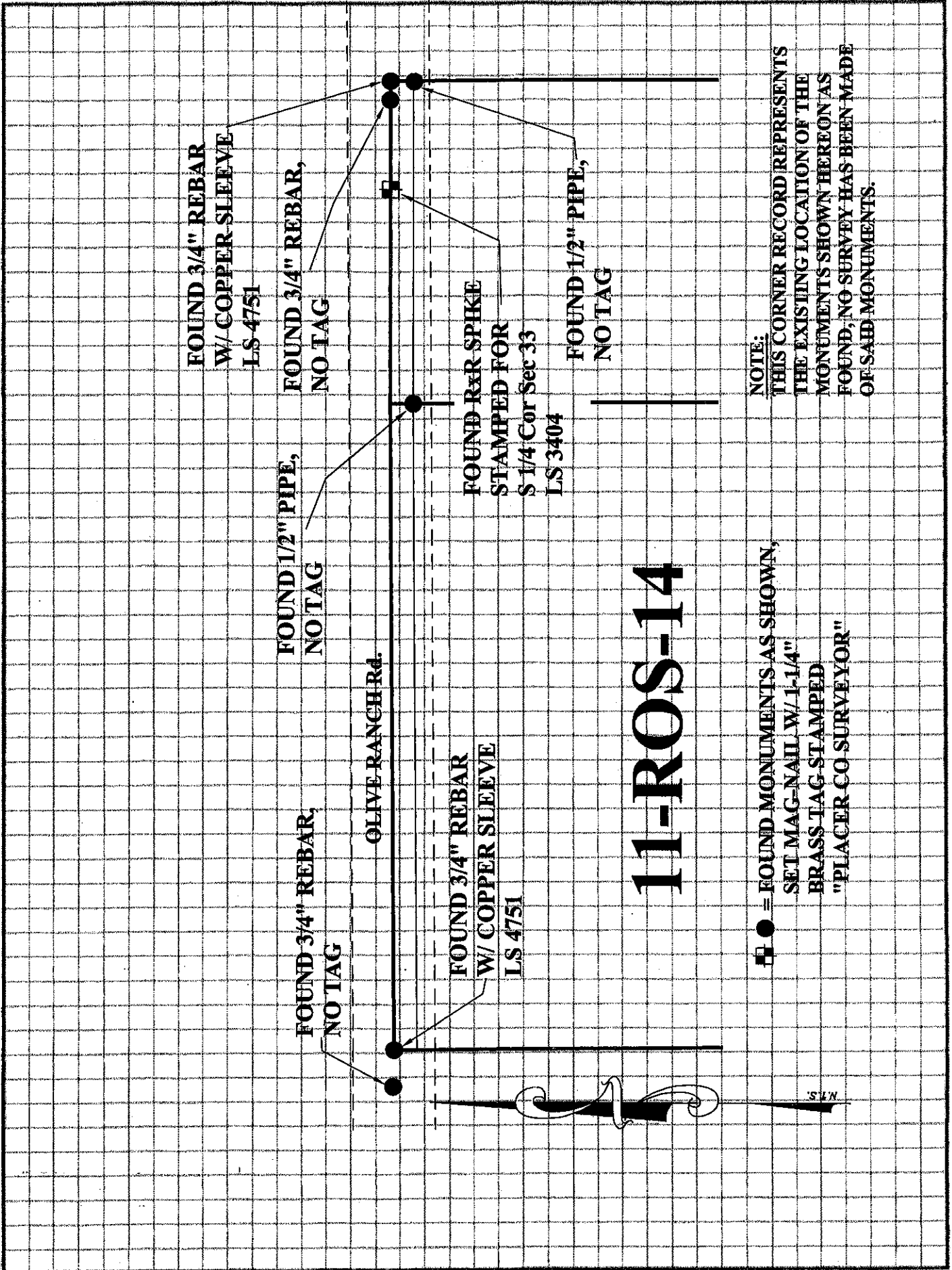
and filed MAY 6 20 08.

Signed [Signature] Title DEPUTY COUNTY SURVEYOR
LS 6158 LICENSE EXPIRES 3-31-10



County Surveyor's Comment _____

BOOK 12 CORNER RECORDS PAGE 16



FOUND 3/4" REBAR
W/ COPPER SLEEVE
LS 4751

FOUND 3/4" REBAR,
NO TAG

FOUND 1/2" PIPE,
NO TAG

FOUND 3/4" REBAR,
NO TAG

OLIVE RANCH RD.

FOUND 3/4" REBAR
W/ COPPER SLEEVE
LS 4751

FOUND R&R SPIKE
STAMPED FOR
S 1/4 Cor Sec 33
LS 3404

FOUND 1/2" PIPE,
NO TAG

11-ROS-14

■ ● = FOUND MONUMENTS AS SHOWN,
SET MAG-NAIL W/ 1-1/4"
BRASS TAG-STAMPED
"PLACER CO SURVEYOR"

NOTE:
THIS CORNER RECORD REPRESENTS
THE EXISTING LOCATION OF THE
MONUMENTS SHOWN HEREON AS
FOUND, NO SURVEY HAS BEEN MADE
OF SAID MONUMENTS.