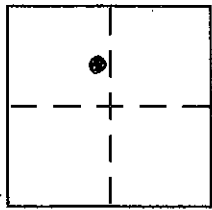


CORNER RECORD

Document Number 20070035

City of UNINCORPORATED AREA County of PLACER, California

Brief Legal Description LOT 42 PONDEROSA RANCHOS
BOOK "N" OF MAPS PAGE 72 P.C.R.



SEC. 23
T. 17N.
R. 16E.
M.P.M.

CORNER TYPE

Government Corner Control
Meander Property
Rancho Other
Date of Survey 9/27/07

COORDINATES (Optional)

N. _____
E. _____
Zone _____ NAD27 NAD83
NAD83 Epoch _____
Elev. _____
Vert. Datum: NGVD29 NAVD88
Meas. Units: Metric Imperial

Corner - Left as found Found and tagged Established Reestablished Rebuilt

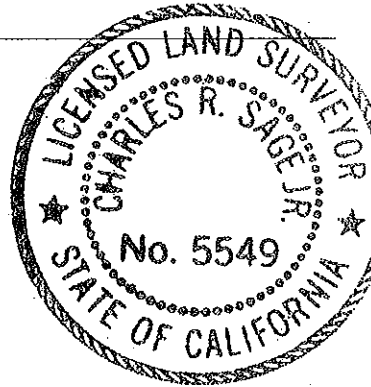
Identification and type of corner found: Evidence used to identify or procedure used to establish or reestablish the corner:
● = FOUND 3/4" REBAR W/PLASTIC CAP RCE 20257, PER "N" MAPS/72

A description of the physical condition of the monument as found and as set or reset:
○ = SET RATHER MONUMENT (T-BAR) W/ NAIL + TAG L.S. 5549

UN. 07100

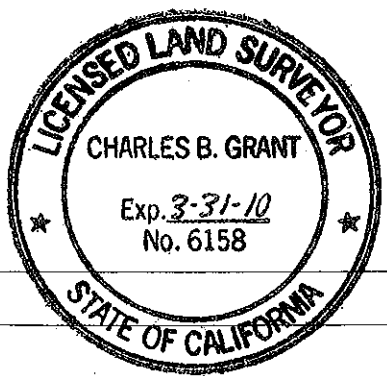
SURVEYOR'S STATEMENT

This Corner Record was prepared by me or under my direction in conformance with the Land Surveyor's Act on OCTOBER 4, 2007
Signed Charles R. Sagejar P.L.S or R.C.E. No. L.S. 5549
LIC. EXP. 6/30/09



COUNTY SURVEYOR'S STATEMENT

This Corner Record was received _____
and examined and filed JUNE 6, 2008
Signed Charles B. Grant P.L.S or R.C.E. No. 6158
LICENSE EXPIRES 3-31-10
Title DEPUTY COUNTY SURVEYOR



County Surveyor's Comment _____

BOOK 12 CORNER RECORDS PAGE 18

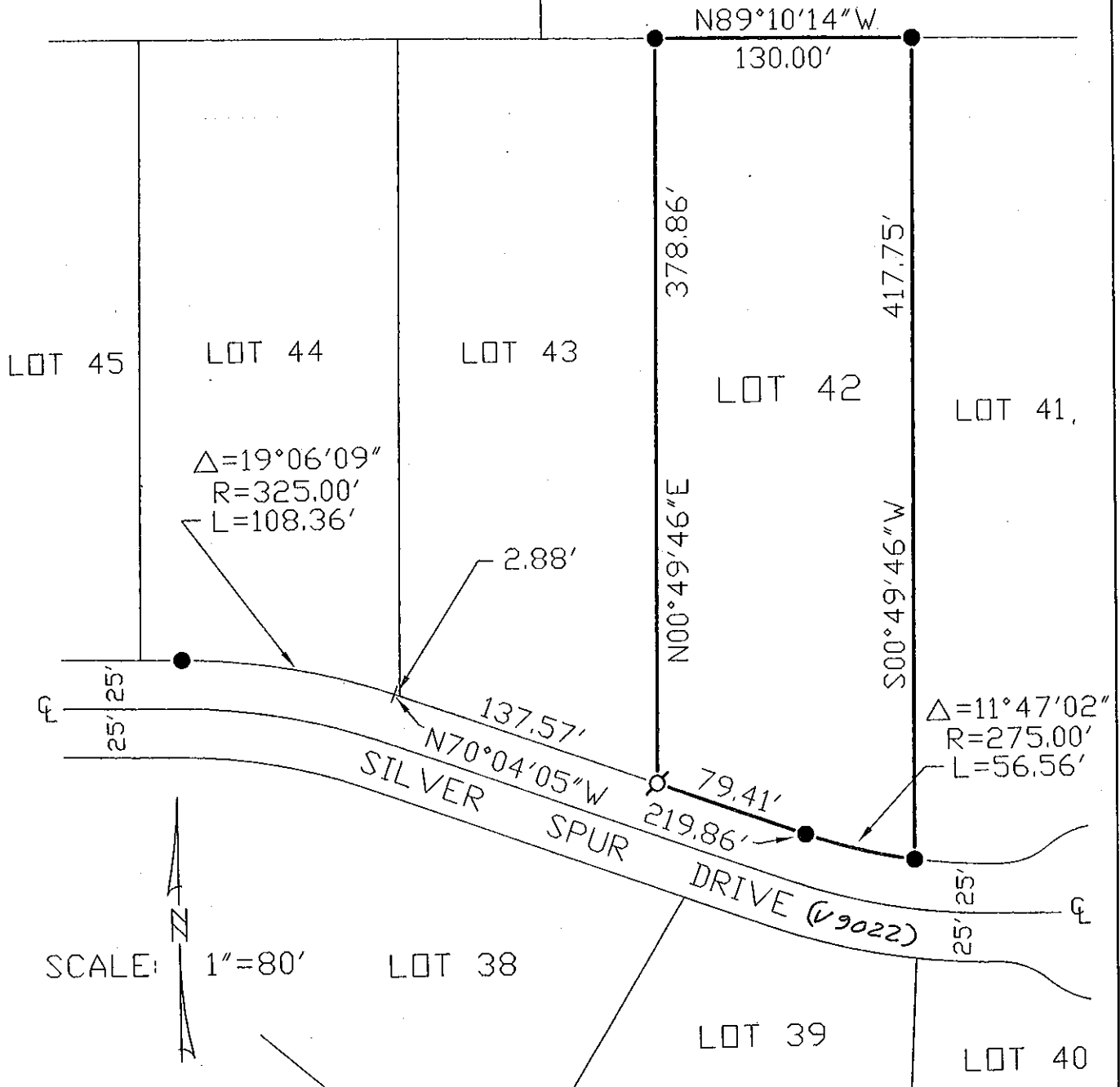
NOTE: THE BEARINGS AND DISTANCES SHOWN ARE RECORD PER N/MAPS/72 P.C.R.
 NO MATERIAL DISCREPANCIES WITH RECORD INFORMATION WERE FOUND.

PARCEL 4
 25/PM/155

DOC. # 93-R0022222

PARCEL 4
 26/PM/110

DOC. # 98-R0071013



BOOK 12 CORNER RECORDS PAGE 18