

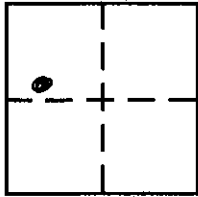
CORNER RECORD

COUNTY OF PLACER, CALIFORNIA

City of UNINCORPORATED AREA

Document Number 20080035

Brief Legal Description LOT 9 PONDEROSA RANCHOS
BOOK "N" OF MAPS PAGE 72 P.C.E.



SEC. 23
T. 17N.
R. 16E.
M.O.M.

CORNER TYPE

Government Corner Control
Meander Property
Rancho Other
Date of Survey 4/3/08

COORDINATES
(Optional)

N. _____
E. _____
Zone _____ Datum _____
Elev. _____

Corner — Left as found Found and tagged Established Reestablished Rebuilt

Identification and type of corner found: Evidence used to identify or procedure used to establish or reestablish corner:

- = FOUND 5/8" REBAR, NO TAG, BELIEVE TO BE ORIGINAL, PER N/MAPS/72
- = FOUND 5/8" REBAR W/PLASTIC CAP RCIE 20257, PER N/MAPS/72
- = FOUND BRASS DISC STAMPED RCIE 20257 IN MONUMENT WELL, PER N/MAPS/72

A description of the physical condition of the monument as found and as set or reset:

○ = SET NAIL + TAG ON WATER BOX RIM, L.S. 5549

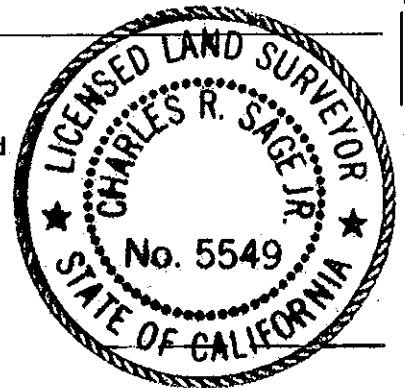
JN. 08005

SURVEYOR'S STATEMENT

This Corner Record was prepared by me or under my direction in conformance with the Land

Surveyors' Act on APRIL 8, 20 08.

Signed [Signature] L.S. or R.C.E. Number L.S. 5549
L.C. 674? 6/30/09

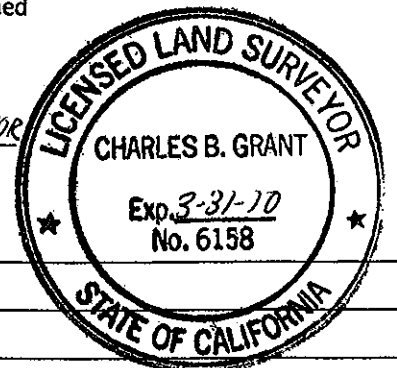


COUNTY SURVEYOR'S STATEMENT

This Corner Record was received _____ 20 _____ and examined

and filed AUGUST 28 20 08.

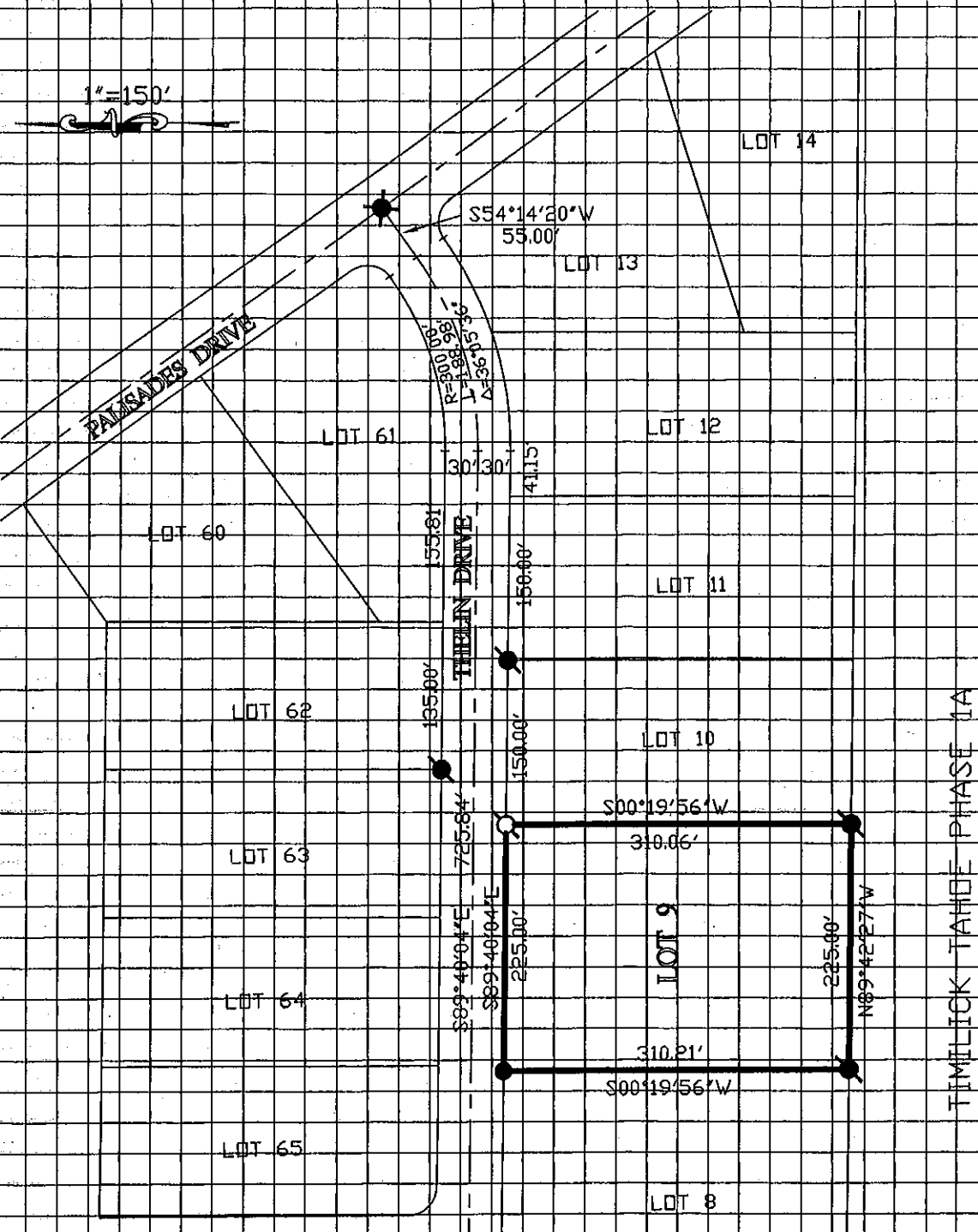
Signed Charles B. Grant L.S. 6158 Title DEPUTY COUNTY SURVEYOR
LICENSE EXPIRES 3-31-10



County Surveyor's Comment _____

BOOK 12 CORNER RECORDS PAGE 30

NOTE: THE BEARINGS AND DISTANCES SHOWN ARE RECORD PER N/MAPS/72 P.C.R.
 NO MATERIAL DISCREPANCIES WITH RECORD INFORMATION WERE FOUND.



BOOK 12 CORNER RECORDS PAGE 30