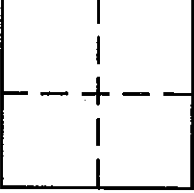


CORNER RECORD

COUNTY OF PLACER, CALIFORNIA

City of \_\_\_\_\_ Document Number 20080038

Brief Legal Description PARCELS 1 & 2, 32 P.M. 73, POR. SEC. 24, T.11N, R.7E, MDM.

	<u>S. 24</u>	CORNER TYPE		COORDINATES (Optional)	
	<u>T. 11 N</u>				
	<u>R. 7 E</u>	Meander <input type="checkbox"/>	Property <input checked="" type="checkbox"/>	E. _____	
	<u>MDM</u>	Rancho <input type="checkbox"/>	Other <input type="checkbox"/>	Zone _____ Datum _____	
		Date of Survey <u>JUNE 20, 2008</u>		Elev. _____	

Corner — Left as found  Found and tagged  Established  Reestablished  Rebuilt

Identification and type of corner found: Evidence used to identify or procedure used to establish or reestablish corner:  
FOUND EXISTING MONUMENTS SUFFICIENT TO RESET CORNERS USING RECORD DATA PER 32 PM 73 ORAC.

A description of the physical condition of the monument as found and as set or reset:  
Ø = SET 3/4" REBAR CAPPED L.S. 3735 IN RECORD POSITION

SURVEYOR'S STATEMENT

This Corner Record was prepared by me or under my direction in conformance with the Land

Surveyors' Act on JULY 18, 2008 20 \_\_\_\_\_

Signed Gerald F. Ding L.S. or R.C.E. Number L.S. 3735

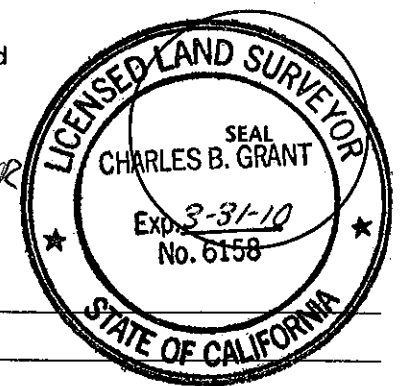


COUNTY SURVEYOR'S STATEMENT

This Corner Record was received \_\_\_\_\_ 20 \_\_\_\_\_ and examined

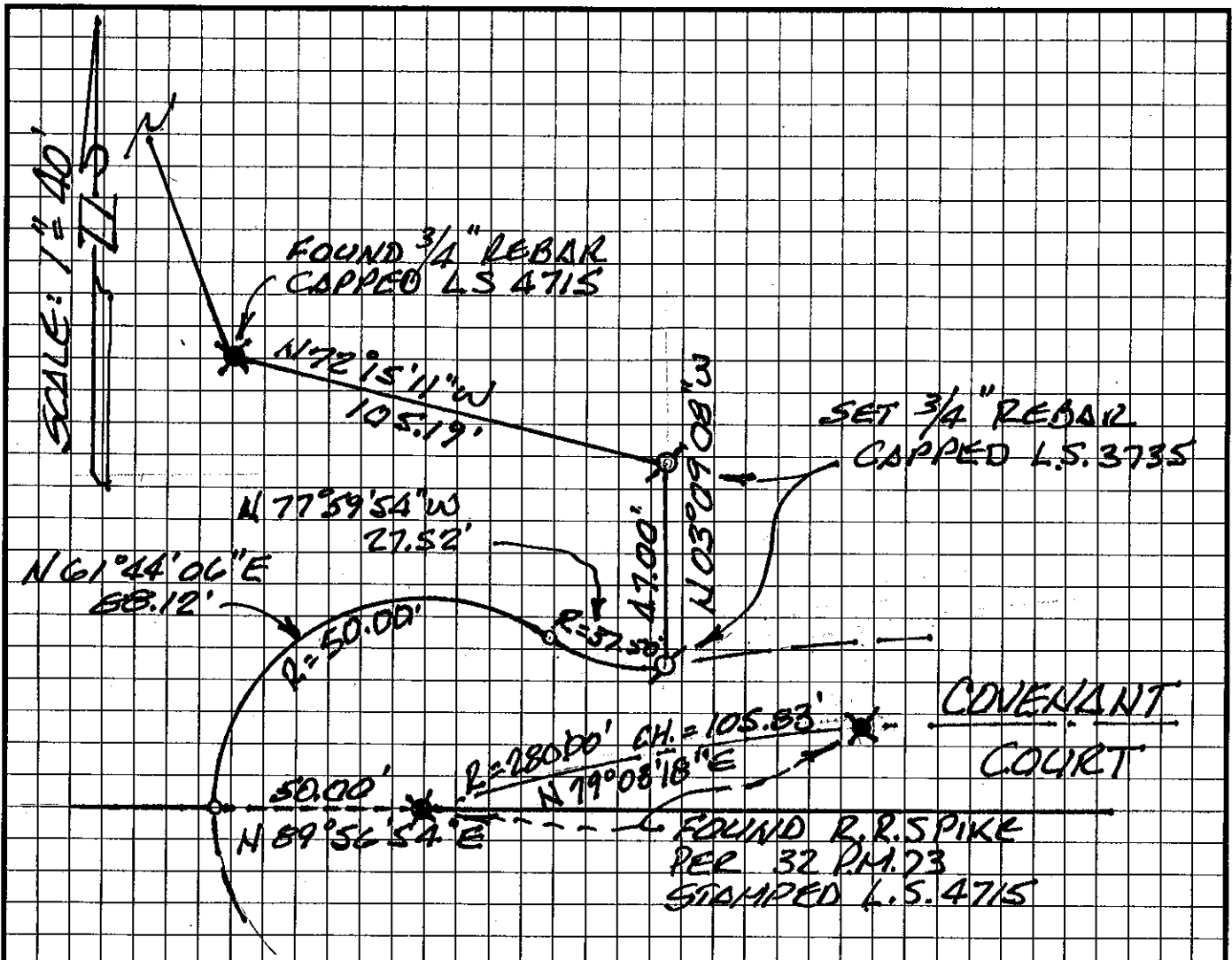
and filed AUGUST 28 2008.

Signed Charles B. Grant L.S. 6158 Title DEPUTY COUNTY SURVEYOR  
LICENSE EXPIRES 3-31-10



County Surveyor's Comment \_\_\_\_\_

BOOK 12 CORNER RECORDS PAGE 34



NOTE:

ALL BEARINGS AND DISTANCES SHOWN ARE RECORDED PER 32 P.M. 73, O.R.C.

LEGEND:

- ★ FOUND MONUMENT AS NOTED
- SET MONUMENT AS NOTED
- DIMENSION POINT
- NOTHING FOUND OR SET.