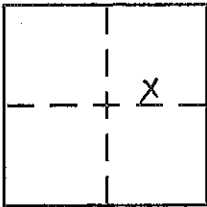


CORNER RECORD

Document Number 20080069

City of \_\_\_\_\_ County of PLACER, California

Brief Legal Description LOT 16, BLOCK "K", SQUAW VALLEY ESTATES SUB. NO. 3, E/MAPS/93, O.R.P.C.



SEC. 29  
T. 16 N.  
R. 16 E.  
M.D.B. & M.

CORNER TYPE

Government Corner  Control   
Meander  Property   
Rancho  Other   
Date of Survey 10-16-2008

COORDINATES (Optional)

N. \_\_\_\_\_  
E. \_\_\_\_\_  
Zone \_\_\_\_\_ NAD27  NAD83   
NAD83 Epoch \_\_\_\_\_  
Elev. \_\_\_\_\_  
Vert. Datum: NGVD29  NAVD88   
Meas. Units: Metric  Imperial

Corner - Left as found  Found and tagged  Established  Reestablished  Rebuilt

Identification and type of corner found: Evidence used to identify or procedure used to establish or reestablish the corner:

USED THE RECORD DIMENSIONS PER E/MAPS/93, O.R.P.C. AND THE FOUND MONUMENTS TO REESTABLISH THE MISSING CORNERS OF LOT 16, BLOCK "K", AS SHOWN ON THE ACCOMPANYING PLAT.

A description of the physical condition of the monument as found and as set or reset:

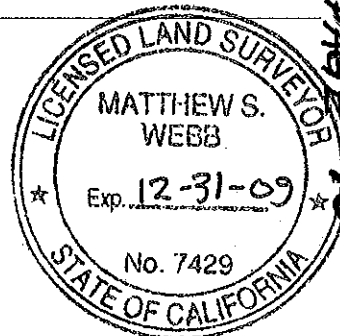
SET 5/8" REBAR WITH YELLOW PLASTIC CAP MARKED LS 7429.

SURVEYOR'S STATEMENT

This Corner Record was prepared by me or under my direction in conformance with

the Land Surveyor's Act on October 22, 2008

Signed [Signature] P.L.S. or R.C.E. No. 7429



COUNTY SURVEYOR'S STATEMENT

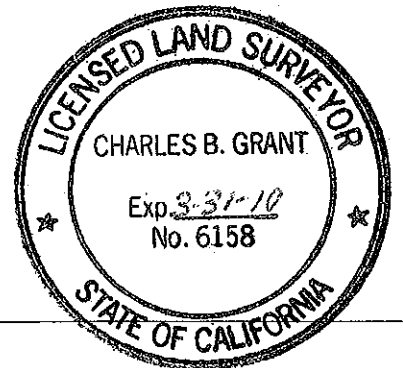
This Corner Record was received \_\_\_\_\_

and examined and filed DEC 3 2008

Signed [Signature] P.L.S. or R.C.E. No. 6158

Title COUNTY SURVEYOR

County Surveyor's Comment \_\_\_\_\_

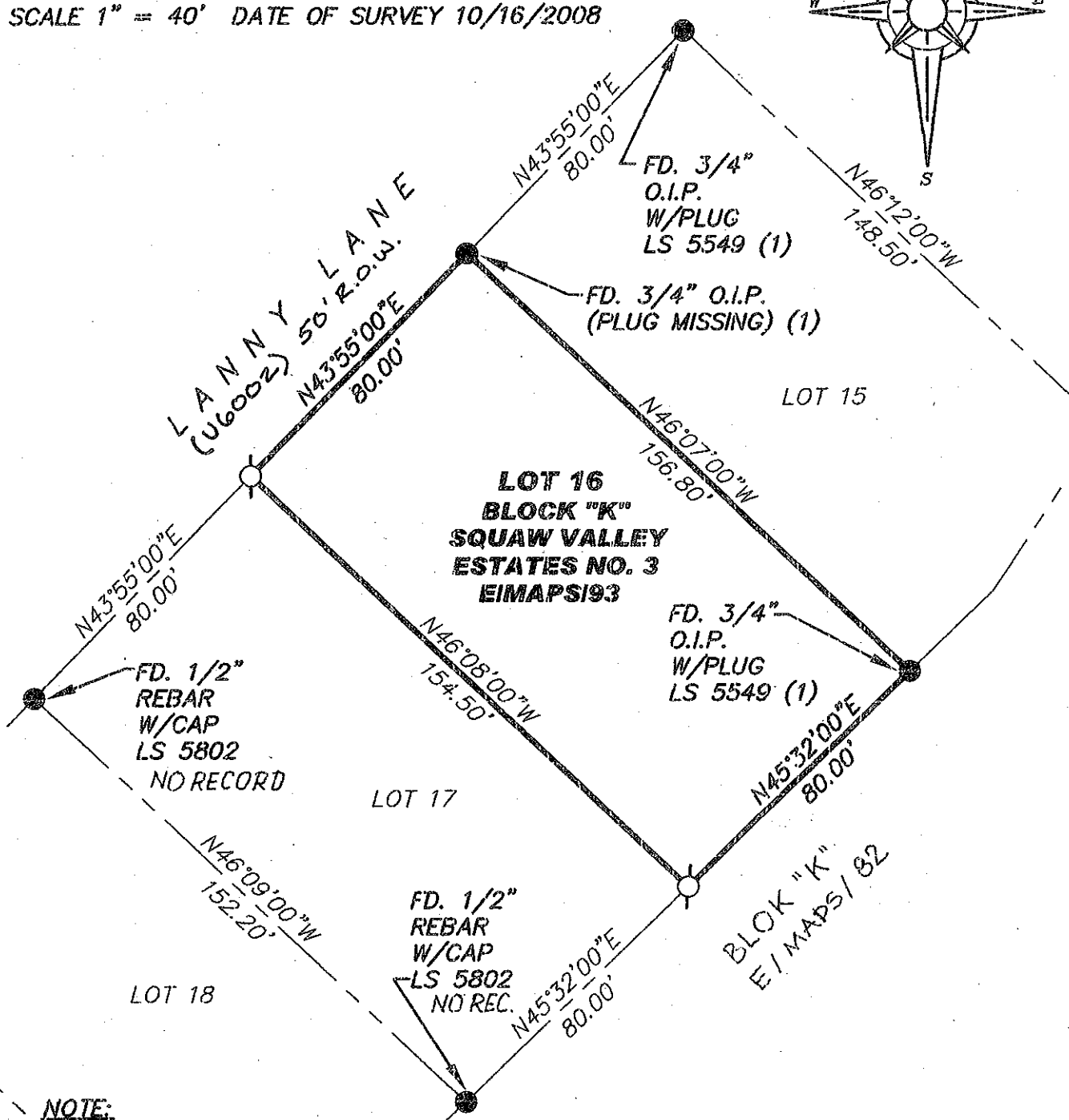
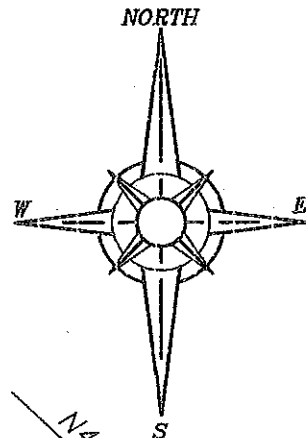


BOOK 12 CORNER RECORDS, PAGE 110

**PLAT OF SURVEY**

LOT 16, BLOCK "K", SQUAW VALLEY ESTATES  
 SUBDIVISION NO. 3, AS FILED IN BOOK E OF MAPS  
 AT PAGE 93, OFFICIAL RECORDS PLACER COUNTY,  
 CALIFORNIA. A PORTION OF THE N.E. 1/4 OF SECTION  
 29, TOWNSHIP 16 N., RANGE 16 E., M.D.B. & M.

SCALE 1" = 40' DATE OF SURVEY 10/16/2008



**NOTE:**

ALL BEARINGS AND DISTANCES SHOWN HEREON ARE RECORD PER E/MAPS/93, O.R.P.C.

- FOUND MONUMENT AS SHOWN HEREON
- SET 5/8" REBAR WITH YELLOW PLASTIC CAP L.S. 7429
- (1) RECORD MONUMENT PER BK. 2, COR. REC., PG. 166, O.R.P.C. J/N 1532.00

BOOK 12 CORNER RECORDS, PAGE 40