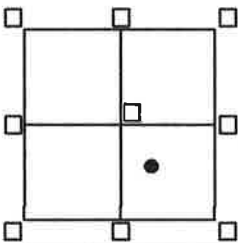


# CORNER RECORD

Agency Index BK 24 PG 46  
 Document Number 20210093

City of UNINCORPORATED AREA County of PLACER, California

Brief Legal Description LOT 43 SERENE LAKES UNIT #5-6  
BOOK "J" OF MAPS PAGE 67 P.C.D.R.



**CORNER TYPE**  
 SEC.27 Government Corner  Control   
 T.17N. Meander  Property   
 R.14E. Rancho  Other   
 M.D.M. Date of Survey 8/29/21

**COORDINATES (Optional)**  
 N. \_\_\_\_\_ E. \_\_\_\_\_  
 Elevation \_\_\_\_\_  
 Units  Metric  U.S. Survey Foot  
 Horizontal Datum \_\_\_\_\_  
 Zone \_\_\_\_\_ Epoch Date \_\_\_\_\_  
 Vertical Datum \_\_\_\_\_  
 Complies with Public Resources Code 8601-8601  
 Complies with Public Resources Code 8690-8902

PLS Act Ref:  8765(d)  8771  8773  Other:

Corner/Monument:  Left as found  Established  Rebuilt  Pre-Construction  
 Found and tagged  Reestablished  Referenced  Post-Construction

Narrative of corner identified and monuments as found, set, reset, replaced, or moved:  
 See sheet #2 for description(s):  
 ● = FOUND 5/8" REBAR W/ PLASTIC CAP L.S. 3332 PER "J"/MAPS/67 P.C.D.R.  
 ● = FOUND RAILROAD SPIKE, NO TAG PER "J"/MAPS/67 P.C.D.R.  
 ● = FOUND BATHEY MONUMENT (T-BAR) W/ NAIL & TAG L.S. 5549 PER 12/CR/21  
 ○ = SET BATHEY MONUMENT (T-BAR) W/ NAIL & TAG STAMPED P.L.S. 8628

**SURVEYOR'S STATEMENT**

This Corner Record was prepared by me or under my direction in conformance with the Professional Land Surveyor's Act on NOVEMBER 2, 2021

Signed [Signature] PLS. or RCE No. 8628  
Lic. Exp. 12/31/23



**COUNTY SURVEYOR'S STATEMENT**

This Corner Record was received May 13, 2022

and examined and filed MAY 16, 2022

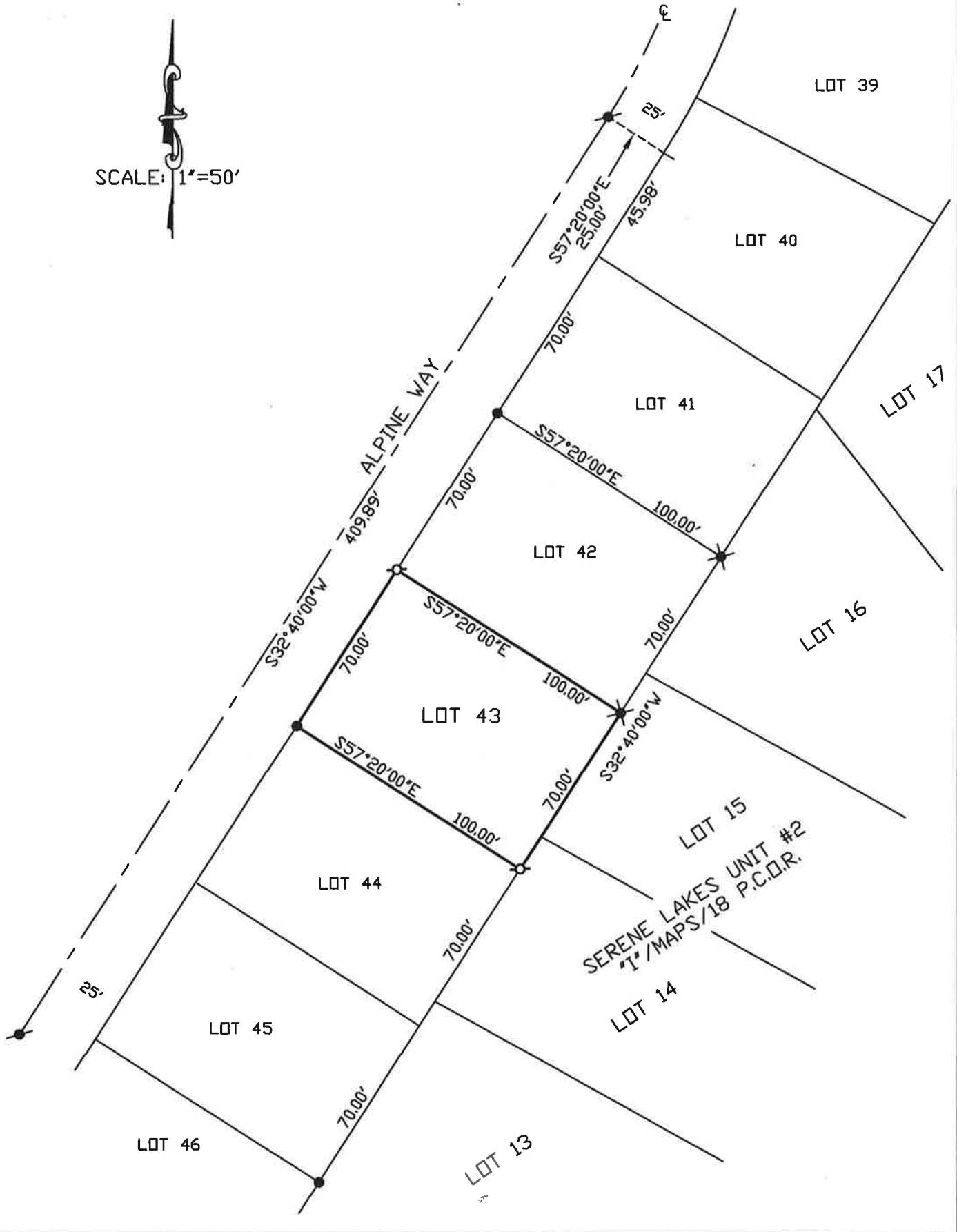
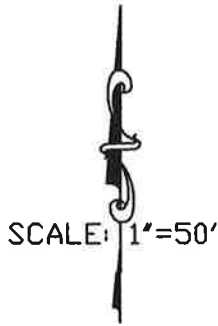
Signed [Signature] PLS. or RCE No. 8373

Title County Surveyor

County Surveyor's Comment \_\_\_\_\_



NOTE: THE BEARINGS AND DISTANCES SHOWN ARE RECORD PER "J"/MAPS/67 P.C.D.R.  
NO MATERIAL DISCREPANCIES WITH RECORD INFORMATION WERE FOUND.



BOOK 24 CORNER RECORDS PAGE 46