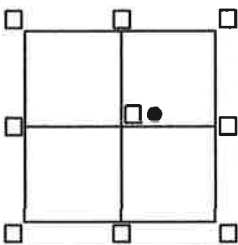


CORNER RECORD

Agency Index BK 24 PG 48
 Document Number 20210095

City of UNINCORPORATED AREA County of PLACER, California

Brief Legal Description LOT 209 SERENE LAKES UNIT #5-6
BOOK "J" OF MAPS PAGE 67 P.C.D.R.



CORNER TYPE
 SEC.27 Government Corner Control
 T.17N. Meander Property
 R.14E. Rancho Other
 M.D.M. Date of Survey 9/05/21

COORDINATES (Optional)
 N. _____ E. _____
 Elevation _____
 Units Metric U.S. Survey Foot
 Horizontal Datum _____
 Zone _____ Epoch Date _____
 Vertical Datum _____
 Complies with Public Resources Code 8601-8601
 Complies with Public Resources Code 8690-8692

PLS Act Ref: 8765(d) 8771 8773 Other:

Corner/Monument: Left as found Established Rebuilt Pre-Construction
 Found and tagged Reestablished Referenced Post-Construction

Narrative of corner identified and monuments as found, set, reset, replaced, or moved:

See sheet #2 for description(s):

- = FOUND 5/8" REBAR W/ PLASTIC CAP L.S. 3332 PER "J"/MAPS/67 P.C.D.R.
- = FOUND RAILROAD SPIKE, NO TAG PER "J"/MAPS/67 P.C.D.R.
- = FOUND 5/8" REBAR NO TAG, BELIEVE TO TO ORIGINAL PER "J"/MAPS/67 P.C.D.R.

○ = SET BATHEY MONUMENT (T-BAR) W/ NAIL & TAG STAMPED P.L.S. 8628

⊗ = SET NAIL & TAG STAMPED P.L.S. 8628, ON NORTH SIDE OF WATER BOX

SURVEYOR'S STATEMENT

This Corner Record was prepared by me or under my direction in conformance with the Professional Land Surveyor's Act on NOVEMBER 2, 2021

Signed J. Kurt Margraf PLS. or R.C.E. No. 8628
LIC. EXP. 12/31/23



COUNTY SURVEYOR'S STATEMENT

This Corner Record was received May 13, 2022

and examined and filed MAY 16, 2022

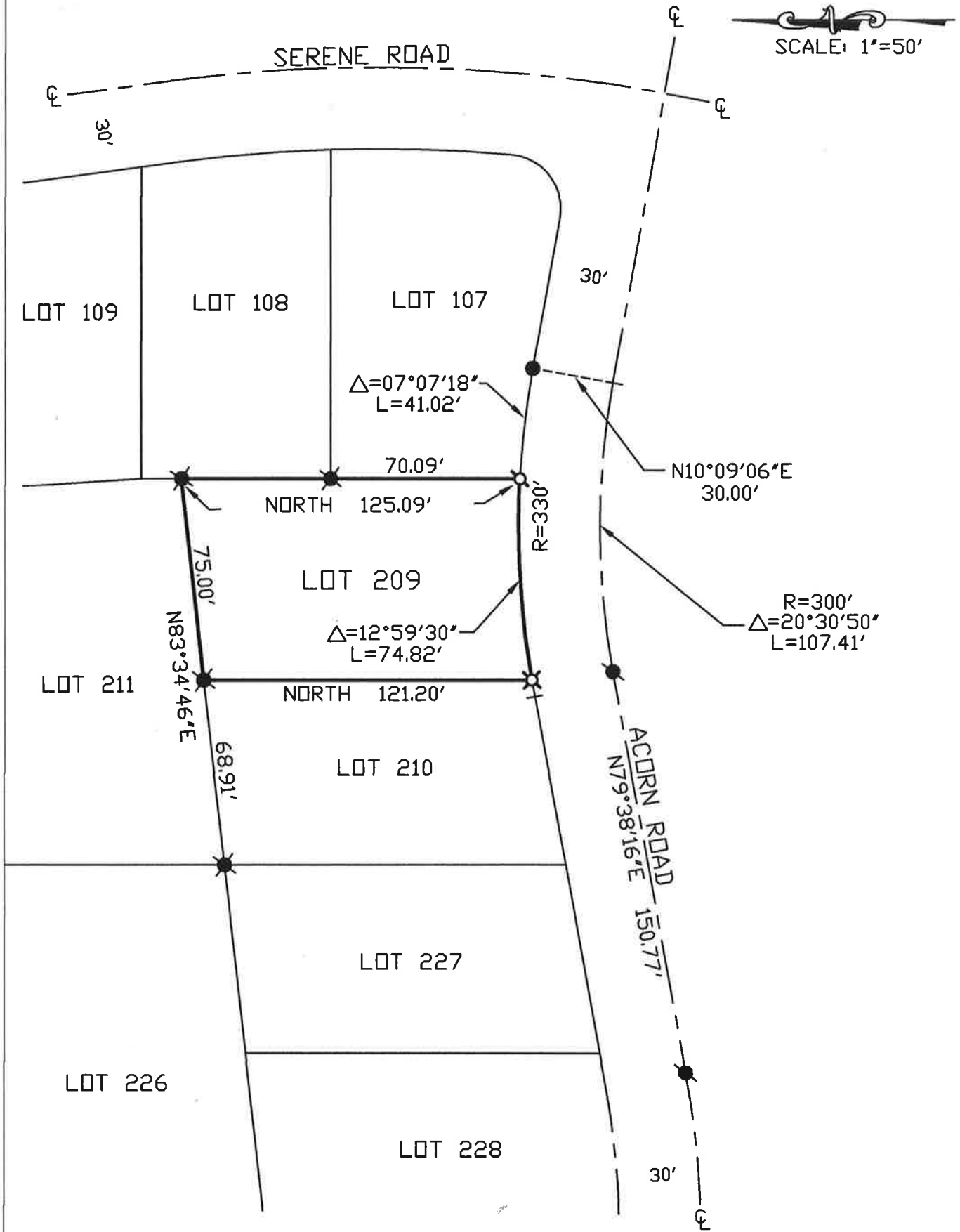
Signed Benjamin J. Bardakjian PLS. or R.C.E. No. 8373

Title County Surveyor



County Surveyor's Comment _____

NOTE: THE BEARINGS AND DISTANCES SHOWN ARE RECORD PER 'J'/MAPS/67 P.C.D.R. NO MATERIAL DISCREPANCIES WITH RECORD INFORMATION WERE FOUND.



BOOK 24 CORNER RECORDS PAGE 48