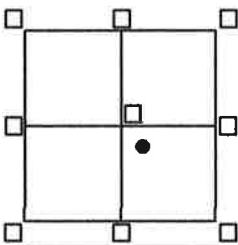


CORNER RECORD

Agency Index BK 24 PG 49
 Document Number 20210096

City of UNINCORPORATED AREA County of PLACER, California

Brief Legal Description LOT 2 & LOT 3 BLOCK "S" ICE LAKES UNIT#2
BOOK "G" OF MAPS AT PAGE 1 P.C.D.R.



CORNER TYPE

SEC.27 Government Corner Control
 T.17N. Meander Property
 R.14E. Rancho Other
 M.D.M. Date of Survey 9/10/21

COORDINATES (Optional)

N. _____ E. _____
 Elevation _____
 Units Metric U.S. Survey Foot
 Horizontal Datum _____
 Zone _____ Epoch Date _____
 Vertical Datum _____
 Complies with Public Resources Code 8801-8901
 Complies with Public Resources Code 8890-8902

PLS Act Ref: 8765(d) 8771 8773 Other:

Corner/Monument: Left as found Established Rebuilt Pre-Construction
 Found and tagged Reestablished Referenced Post-Construction

Narrative of corner identified and monuments as found, set, reset, replaced, or moved:

See sheet #2 for description(s):

● = FOUND 3/4" IRON PIPE W/ PLASTIC PLUG L.S. 5549, NO RECORD

● = FOUND 1/2" REBAR, NO TAG

● = FOUND 5/8" REBAR W/ PLASTIC CAP L.S. 5851, NO RECORD

⊙ = FOUND 1/2" REBAR W/ PLASTIC CAP L.S. 4647, NO RECORD

○ = DIMENSION POINT ONLY

⊙ = SET BATHEY MONUMENT (T-BAR) W/ NAIL & TAG STAMPED P.L.S. 8628

JN:21175

SURVEYOR'S STATEMENT

This Corner Record was prepared by me or under my direction in conformance with the Professional Land Surveyor's Act on SEPTEMBER 14, 2021

Signed [Signature] PLS or RCE No. 8628
 Lic. Exp. 12/31/23



COUNTY SURVEYOR'S STATEMENT

This Corner Record was received May 13, 2022

and examined and filed MAY 16, 2022

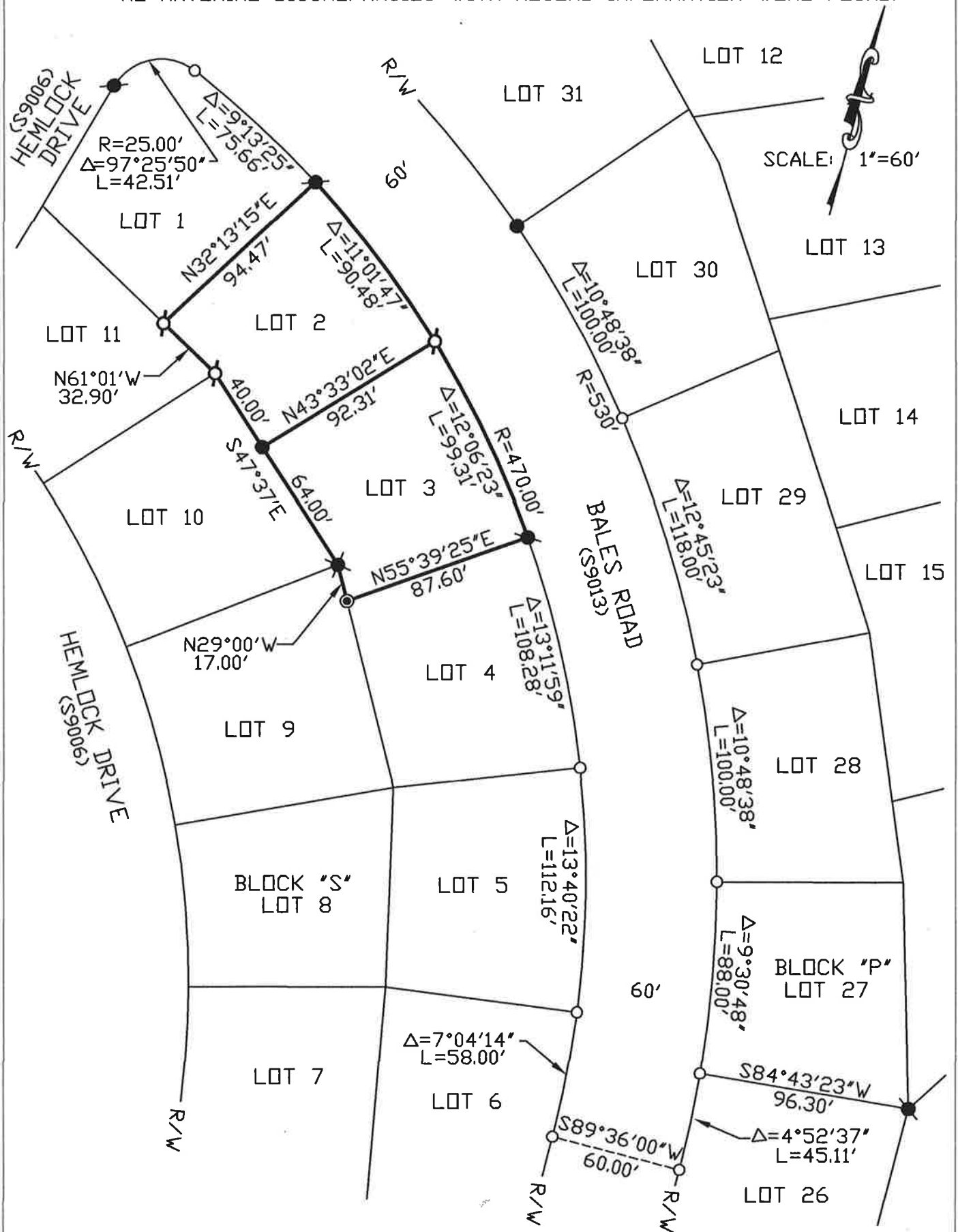
Signed [Signature] PLS or RCE No. 8373

Title County Surveyor

County Surveyor's Comment _____



NOTE: THE BEARINGS AND DISTANCES SHOWN ARE RECORD PER "G"/MAPS/1 P.C.D.R. NO MATERIAL DISCREPANCIES WITH RECORD INFORMATION WERE FOUND.



BOOK 24 CORNER RECORDS PAGE 49