

CORNER RECORD

COUNTY OF PLACER, CALIFORNIA

City of Auburn

Document Number 20090006

Brief Legal Description: Section Corner common to Sections 3, 4, 9 & 10, T.12N., R.8E., MDM, as shown on the Record of Survey recorded in Book 15 of Surveys at Page 155, ORPC.



SEC 3 & 4
T.12 N.
R.8 E.

CORNER TYPE

Government Corner Control
 Meander Property
 Rancho Other
 Date of Survey: _____

COORDINATES (Optional)

N.
E.
Zone Datum
Elev.

Corner — Left as found Found and tagged Established Reestablished Rebuilt

Identification and type of corner found: Evidence used to identify or procedure used to establish or reestablish corner:

Found monuments as shown and designated in Book 15 of Surveys, at Page 155, Official Records of Placer County. Accepted as occupying record positions. See sketch map on reverse side.

A description of the physical condition of the monument as found and as set or reset:

Reset Section Corner common to Sections 3, 4, 9 & 10 as shown on Book 15 Surveys, at Page 155, Official Records of Placer County, with a 2" aluminum cap stamped LS 4922. See sketch maps on reverse side. The original monument was destroyed in construction.

SURVEYOR'S STATEMENT

This Corner Record was prepared by me or under my direction in conformance with the Land Surveyor's Act on December 30, 2008.

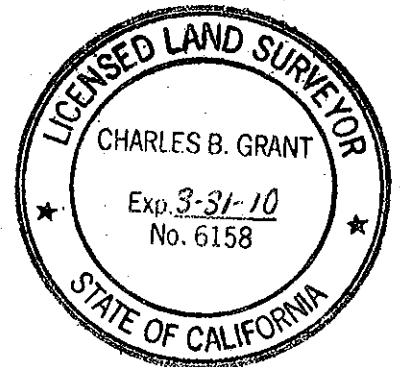
Signed [Signature] LS 4922



COUNTY SURVEYOR'S STATEMENT

This Corner Record was received _____ 20____ and examined and filed FEB 15 2009.

Signed Charles B. Grant LS 6158 Title COUNTY SURVEYOR
 LICENSE EXPIRES 3-31-10

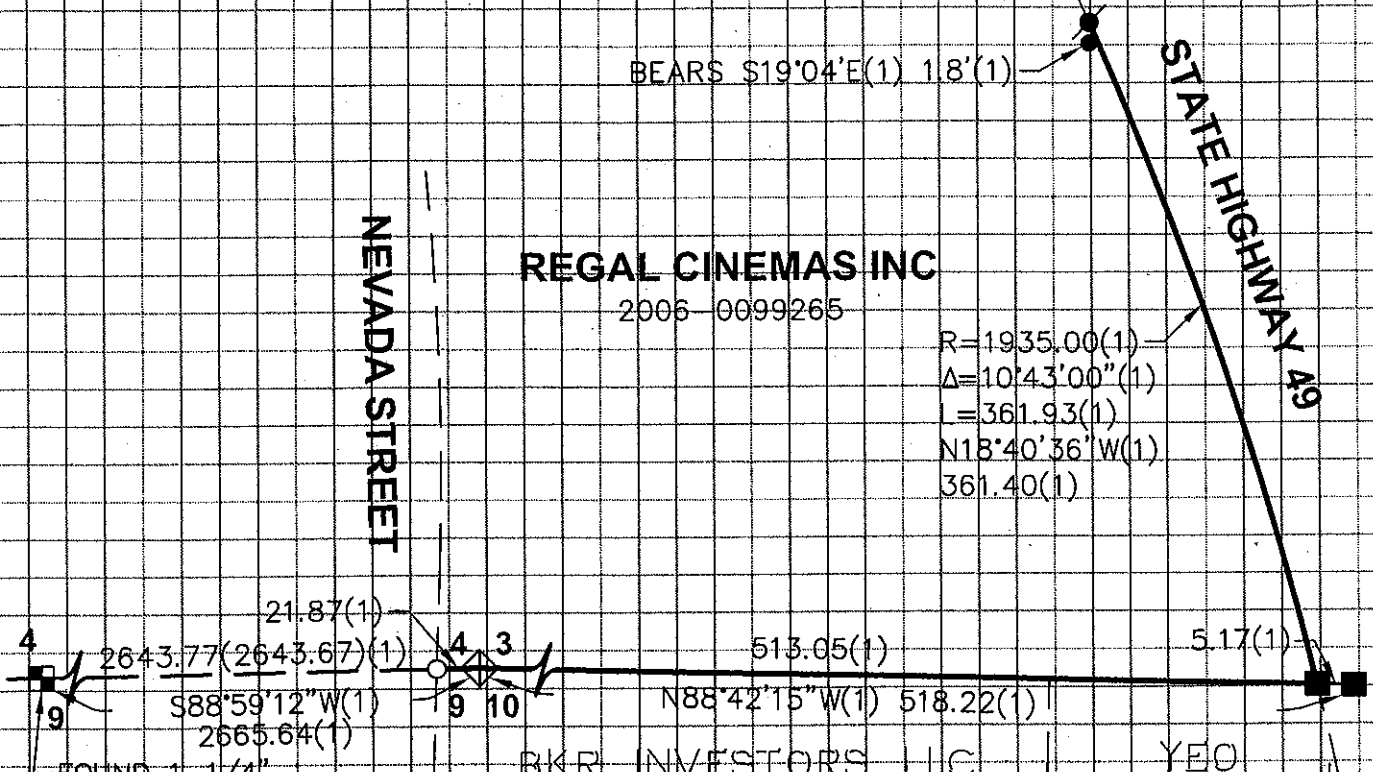


County Surveyor's Comment _____

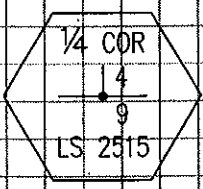
BOOK 12 CORNER RECORD PAGE 73

NOTES

1. BEARINGS AND DISTANCES SHOWN HEREON ARE RECORD PER 15 RS 155, ORPC
2. DISTANCES SHOWN HEREON ARE EXPRESSED IN FEET AND DECIMALS THEREOF

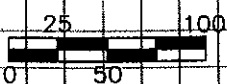
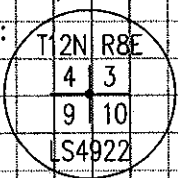


FOUND 1-1/4" CAPPED PIPE STAMPED:



LEGEND

- FOUND 1/2" IRON PIN NO TAG(1)
- FOUND 3/4" IRON PIN W/ COPPER COLLAR STAMPED LS5978(1)
- FOUND 6"X6" CONCRETE HIGHWAY MONUMENT(1)
- FOUND QUARTER SECTION CORNER AS NOTED
- DIMENSION POINT - NOTHING FOUND, NOTHING SET
- ◇ SET 2" ALUMINUM CAP STAMPED:
- (1) RECORD PER 15 ROS 155, ORPC



CORNER RECORD
NEVADA STREET
RESET SECTION CORNER
A PORTION OF
SECTIONS 3, 4, 9 & 10, T.12 N., R.8 E., M.D.M.
CITY OF AUBURN
PLACER COUNTY, CALIFORNIA
SCALE: 1"=100' FEBRUARY 3, 2009

ANDREGG
GEOMATICS
www.andregg.com
800-400-7072

BOOK 12 CORNER RECORD PAGE 73