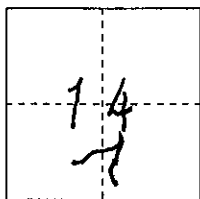


CORNER RECORD

COUNTY OF PLACER, CALIFORNIA

City of _____ Document Number 20090008

Brief Legal Description L-MAPS-22 FOLSOM LAKES ESTATES UNIT 2-B TRACT 391



S. 14

CORNER TYPE

COORDINATES (Optional)

T. 10 N.

Government Corner

Control

N. _____

R. 7 E.

Meander

Property

E. _____

Rancho

Other

Zone _____ Datum _____

Date of Survey _____

Elev. _____

Corner--- Left as found Found and tagged Established Reestablished Rebuilt

Identification and type of corner found: Evidence used to identify or procedure used to establish or reestablish corner:
FOUND MONUMENTS, AS SHOWN, PER BOOK L of MAPS, PAGE 22, FOLSOM LAKE ESTATES UNIT 2-B, TRACT 391 O.R.P.C. FROM FOUND MONUMENTS ESTABLISHED REFERENCE POINTS PRIOR TO ASPHALT OVERLAY.

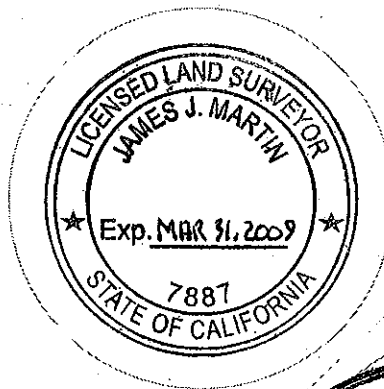
A description of the physical condition of the monument as found and as set or reset:
FROM REFERENCE POINTS SET MAG-NAIL W/ 1-1/4" BRASS TAG STAMPED "PLACER CO SURVEYOR" CENTERED OVER FOUND MONUMENTS AFTER ASPHALT OVERLAY

SURVEYOR'S STATEMENT

This Corner Record was prepared by me or under my direction in conformance with the Professional Land Surveyors' Act on JANUARY 14 2009.

Signed [Signature]

L.S. or R.C.E. Number 7007 Expiration Date May 31, 2009

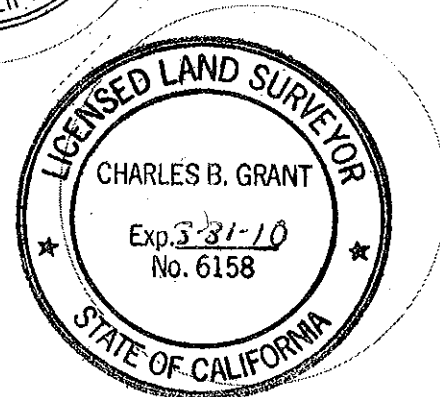


COUNTY SURVEYOR'S STATEMENT

This Corner Record was received _____ 20 _____ and examined and filed FEB 15 2009.

Signed Charles B. Grant Title COUNTY SURVEYOR

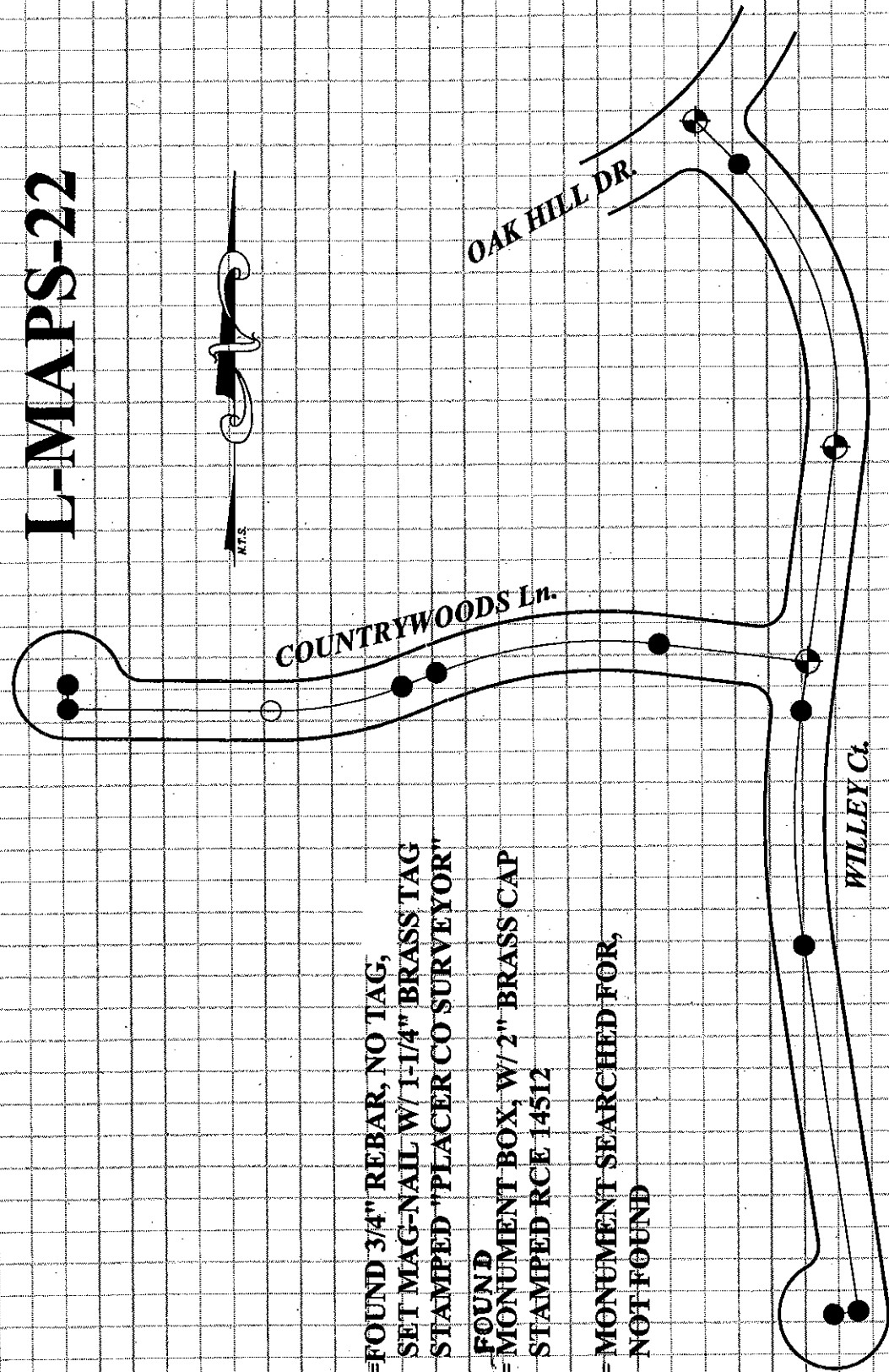
L.S. or R.C.E. Number 6158 Expiration Date 3-31-10



County Surveyor's Comment _____

BOOK 12 CORNER RECORDS PAGE 76

L-MAPS-22



- = FOUND 3/4" REBAR, NO TAG,
SET MAG-NAIL W/ 1-1/4" BRASS TAG
STAMPED "PLACER CO SURVEYOR"
- ⊕ = FOUND
MONUMENT BOX, W/ 2" BRASS CAP
STAMPED RCE 14512
- ⊙ = MONUMENT SEARCHED FOR,
NOT FOUND

NOTE:
 THIS CORNER RECORD REPRESENTS THE
 AS FOUND LOCATION OF THE MONUMENTS
 SHOWN HEREON. NO SURVEY HAS BEEN
 MADE OF SAID MONUMENTS.