

CORNER RECORD

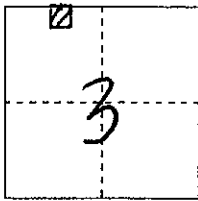
COUNTY OF PLACER, CALIFORNIA

City of _____

Document Number 20090020

Brief Legal Description 12-RDS-128

RECORD of SURVEY No. 1633



S. 3

CORNER TYPE

COORDINATES (Optional)

T. 10 N.

Government Corner

Control

N. _____

Meander

Property

E. _____

R. 7 E.

Rancho

Other

Zone _____ Datum _____

Date of Survey _____

Elev. _____

Corner--- Left as found Found and tagged Established Reestablished Rebuilt

Identification and type of corner found: Evidence used to identify or procedure used to establish or reestablish corner:
FOUND MONUMENTS, AS SHOWN, IN TRAVELED WAY OF OLIVE RANCH ROAD PER RECORD of SURVEY No. 1633, BOOK 12 of SURVEYS, PAGE 128, O.R.P.L. FROM FOUND MONUMENTS ESTABLISHED REFERENCE POINTS PRIOR TO ASPHALT OVERLAY

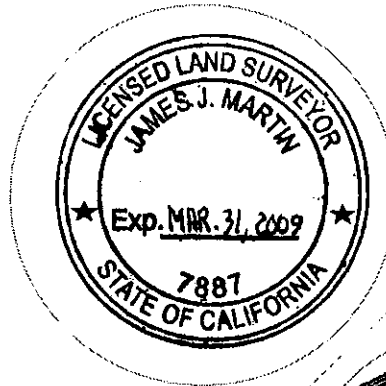
A description of the physical condition of the monument as found and as set or reset:
FROM REFERENCE POINTS SET MAG-NAIL w/ BRASS TAG STAMPED "PLACER CO SURVEYOR" CENTERED OVER FOUND MONUMENTS AFTER ASPHALT OVERLAY

SURVEYOR'S STATEMENT

This Corner Record was prepared by me or under my direction in conformance with the Professional Land Surveyors' Act on February 4 2009.

Signed [Signature]

L.S. or R.C.E. Number 7887 Expiration Date MAR. 31, 2009

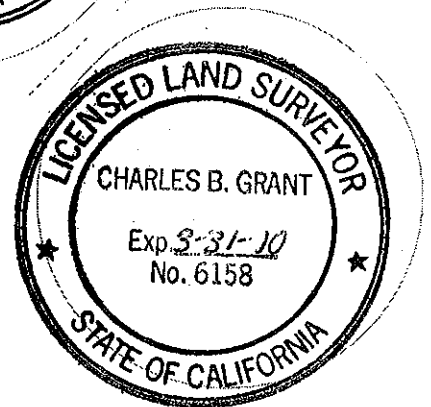


COUNTY SURVEYOR'S STATEMENT

This Corner Record was received _____ 20____ and examined and filed FEBRUARY 27 2009.

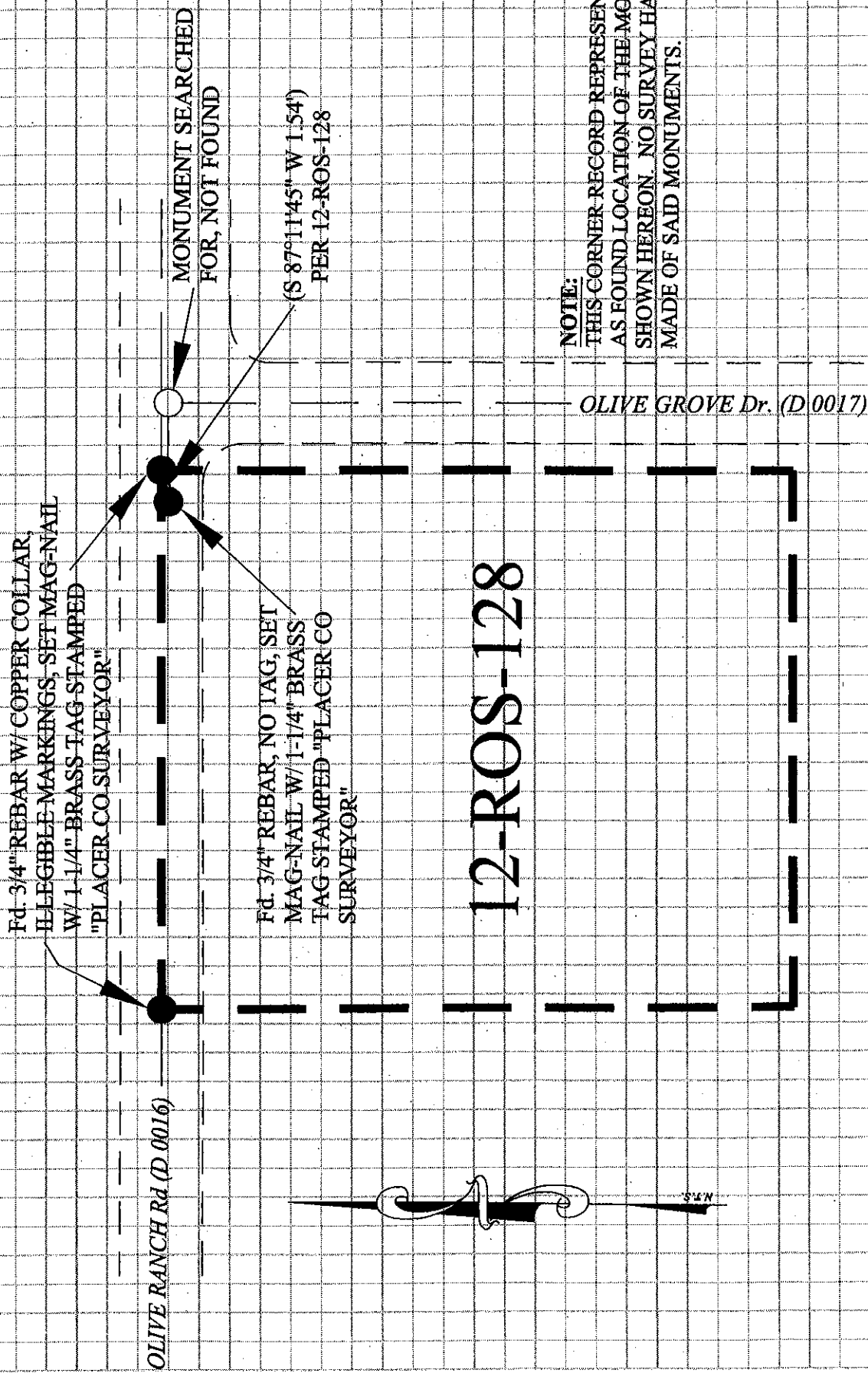
Signed Charles B. Grant Title COUNTY SURVEYOR

L.S. or R.C.E. Number 6158 Expiration Date 3-31-10



County Surveyor's Comment _____

BOOK 12 CORNER RECORDS PAGE 87



Fd. 3/4" REBAR W/ COPPER COLLAR,
 ILLEGIBLE MARKINGS, SET MAG-NAIL
 W/ 1-1/4" BRASS TAG STAMPED
 "PLACER CO SURVEYOR"

Fd. 3/4" REBAR, NO TAG, SET
 MAG-NAIL W/ 1-1/4" BRASS
 TAG STAMPED "PLACER CO
 SURVEYOR"

MONUMENT SEARCHED
 FOR, NOT FOUND

(S 87° 11' 45" W 1.54')
 PER 12-ROS-128

NOTE:

THIS CORNER RECORD REPRESENTS THE
 AS FOUND LOCATION OF THE MONUMENTS
 SHOWN HEREON. NO SURVEY HAS BEEN
 MADE OF SAID MONUMENTS.

OLIVE GROVE Dr. (D 0017)

OLIVE RANCH Rd (D 0016)

12-ROS-128

