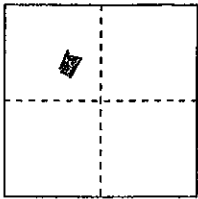


CORNER RECORD

COUNTY OF PLACER, CALIFORNIA

City of _____ Document Number 2009 0050

Brief Legal Description LOT 10 CHRISTIAN VALLEY Park Unit 4, H/Maps/24 OR PL



S. 15

T. 13N

R. 8E

CORNER TYPE

Government Corner
Meander
Rancho
Date of Survey 5/7/09

Control
Property
Other

COORDINATES

(Optional)

N. _____
E. _____
Zone _____ Datum _____
Elev. _____

Corner--- Left as found Found and tagged Established Reestablished Rebuilt

Identification and type of corner found: Evidence used to identify or procedure used to establish or reestablish corner:

1/2" REBARS were found as Basis of Meridian - See Map
Accepted as original per H/Maps/24

A description of the physical condition of the monument as found and as set or reset: Set 3/4" Rebars

with Plastic Cap marked LS 3062 for Corners - See Map

SURVEYOR'S STATEMENT

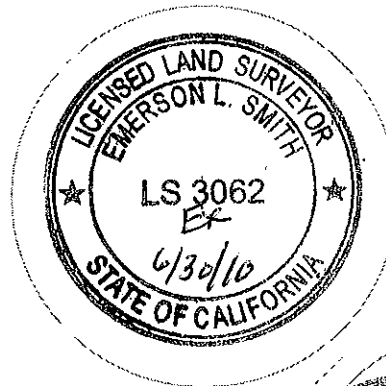
This Corner Record was prepared by me or under my direction

in conformance with the Professional Land Surveyors' Act

on May 8 2009

Signed Emerson L. Smith

L.S. or R.C.E. Number 3062 Expiration Date 6/30/10



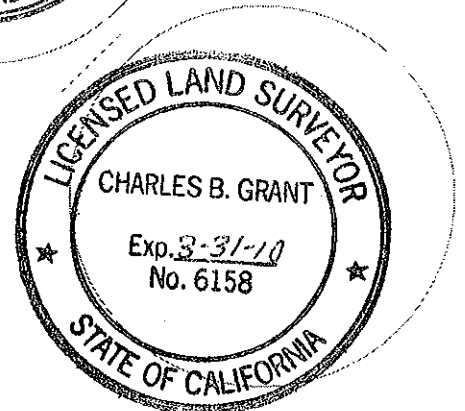
COUNTY SURVEYOR'S STATEMENT

This Corner Record was received _____ 20____

and examined and filed OCTOBER 8, 2009

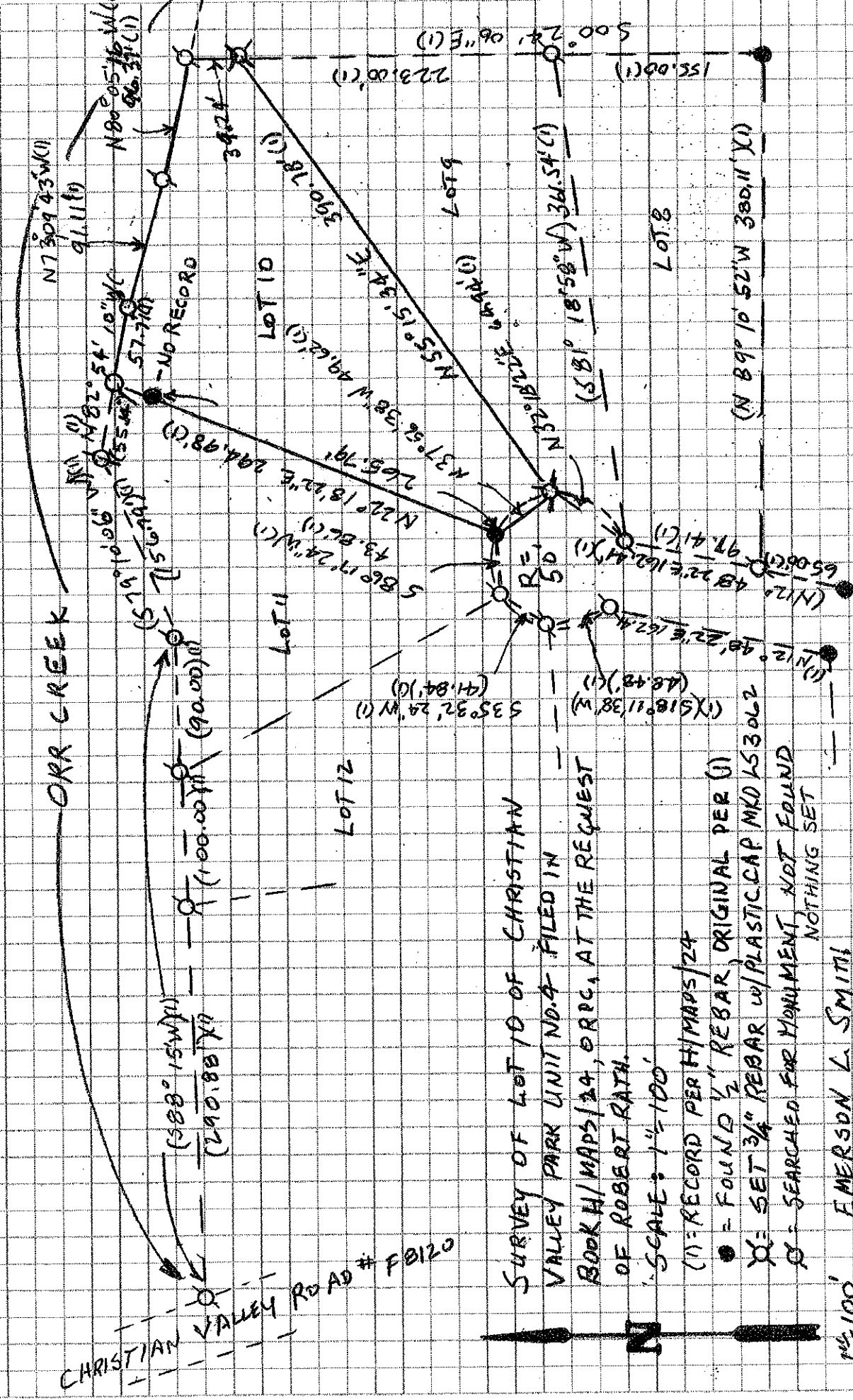
Signed Charles B. Grant Title COUNTY SURVEYOR

L.S. or R.C.E. Number 6158 Expiration Date 3-31-10



County Surveyor's Comment _____

BOOK 13 CORNER RECORDS PAGE 49



SURVEY OF LOT 10 OF CHRISTIAN VALLEY PARK UNIT NO. 4 FILED IN BOOK H/ MAPS 124, ORPC, AT THE REQUEST OF ROBERT RATH.

SCALE: 1" = 100'

(N) = RECORD PER H/ MAPS 124

● = FOUND 1/2" REBAR, ORIGINAL PER (1)

⊗ = SET 3/4" REBAR w/ PLASTIC CAP MKD LS3062

⊘ = SEARCHED FOR MONUMENT, NOT FOUND, NOTHING SET

1/4" = 100' EMERSON L. SMITH
LS 3062