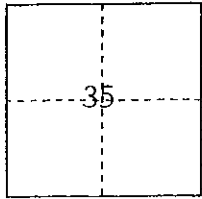


# CORNER RECORD

# COUNTY OF PLACER, CALIFORNIA

City of \_\_\_\_\_ Document Number 20090057

Brief Legal Description N.E. Corner of Parcel "A" 3 PM 45



**S.** 35

**T.** 16 N.

**R.** 10 E.

### CORNER TYPE

Government Corner

Meander

Rancho

Date of Survey 06/24/09

Control

Property

Other

### COORDINATES

(Optional)

N. \_\_\_\_\_

E. \_\_\_\_\_

Zone \_\_\_\_\_ Datum \_\_\_\_\_

Elev. \_\_\_\_\_

Corner--- Left as found  Found and tagged  Established  Reestablished  Rebuilt

Identification and type of corner found; Evidence used to identify or procedure used to establish or reestablish corner:  
Found record monuments as per 3 PM 45. Utilized record dimensions as per said map to reset missing N.E. corner of Parcel "A" 3 PM 45.

A description of the physical condition of the monument as found and as set or reset: \_\_\_\_\_

Reset monument lost to fence construction

See diagram on reverse side of this sheet.

Ø Set 5/8" Rebar Tagged LS 4415

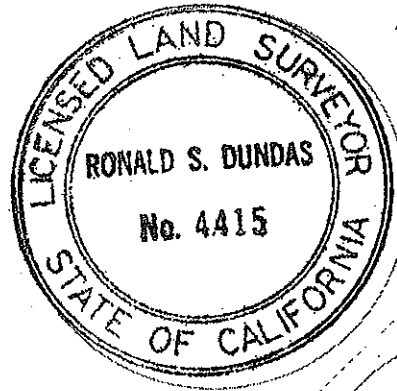
### SURVEYOR'S STATEMENT

This Corner Record was prepared by me or under my direction in conformance with the Professional Land Surveyors' Act

on October 12 2009

Signed [Signature]

L.S. or R.C.E. Number 4415 Expiration Date 09/30/11



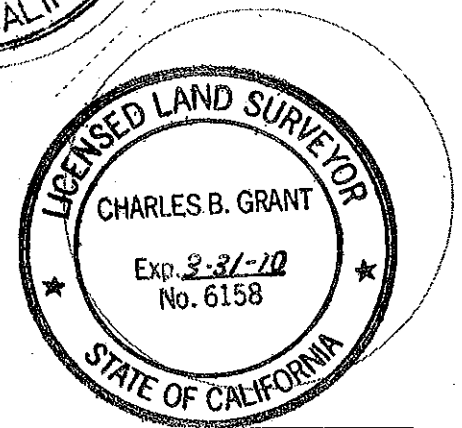
### COUNTY SURVEYOR'S STATEMENT

This Corner Record was received \_\_\_\_\_ 20\_\_\_\_

and examined and filed OCTOBER 16 2009

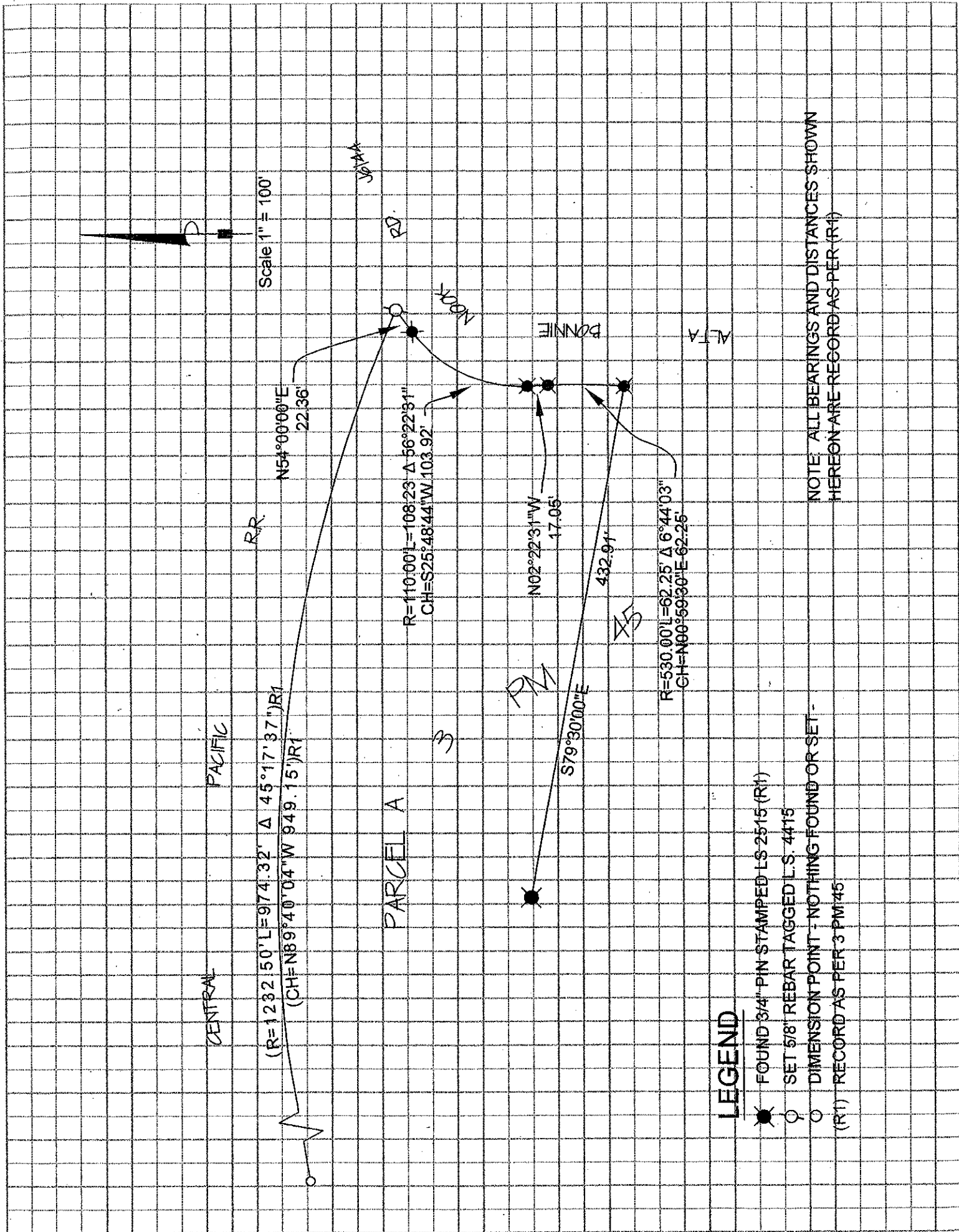
Signed [Signature] Title COUNTY SURVEYOR

(L.S.) or R.C.E. Number 6158 Expiration Date 3-31-10



County Surveyor's Comment \_\_\_\_\_

BOOK 13 CORNER RECORDS PAGE 65



**LEGEND**

- FOUND 3/4" PIN STAMPED L.S. 2515 (R1)
- SET 5/8" REBAR TAGGED L.S. 4415
- DIMENSION POINT - NOTHING FOUND OR SET -
- (R1) RECORD AS PER 3 PM 1/45

NOTE: ALL BEARINGS AND DISTANCES SHOWN HEREON ARE RECORD AS PER (R1)