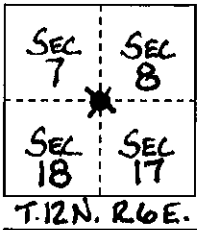


CORNER RECORD

COUNTY OF PLACER, CALIFORNIA

City of LINCOLN Document Number 20090088

Brief Legal Description Corner common to Sections 7, 8, 17 & 18, T. 12 N., R. 6 E., M.D.M.



S.	CORNER TYPE				COORDINATES	
T.	Government Corner	<input type="checkbox"/>	Control	<input checked="" type="checkbox"/>	(Optional) N. <u>2089272.906</u>	
R.	Meander	<input type="checkbox"/>	Property	<input type="checkbox"/>	E. <u>6749475.355</u>	
	Rancho	<input type="checkbox"/>	Other	<input type="checkbox"/>	Zone <u>2</u>	Datum <u>NAD 83</u>
	Date of Survey	<u>OCT. 19, 2009</u>			Elev. <u>118.373</u>	

Corner--- Left as found Found and tagged Established Reestablished Rebuilt

Identification and type of corner found: Evidence used to identify or procedure used to establish or reestablish corner: Found 2 1/2" Brass Disk, marked LS 3636 (Station 107, per 6 RS 25) at the corner common to Sections 7, 8, 17 & 18, T. 12 N., R. 6 E., M.D.M. Found at record location per 6 RS 25 and Book 16 of Surveys, Page 105, Placer County Records (Destroyed during construction). GPS Control Network Stations 513 & 106 (16 RS 105) used to locate and reestablish the corner.

A description of the physical condition of the monument as found and as set or reset: Reset 2 1/2" Brass Disk in Monument well, marked LS 7716. Also marked as the corner common to Sections 7, 8, 17 & 18, T. 12 N., R. 6 E., M.D.M.

SEE PLAT ON REVERSE SIDE

SURVEYOR'S STATEMENT

This Corner Record was prepared by me or under my direction in conformance with the Professional Land Surveyors' Act

on November 24, 2009.

Signed Albert De Leon

L.S. or R.C.E. Number 7716 Expiration Date 3-31-11



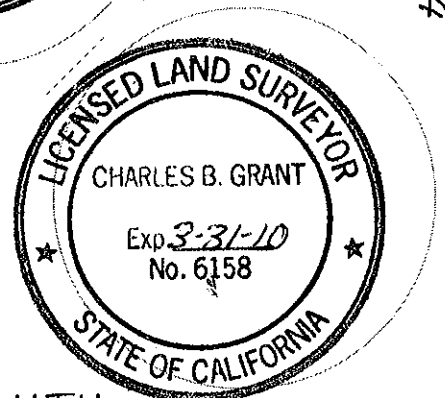
COUNTY SURVEYOR'S STATEMENT

This Corner Record was received _____ 20____

and examined and filed DECEMBER 14 2009.

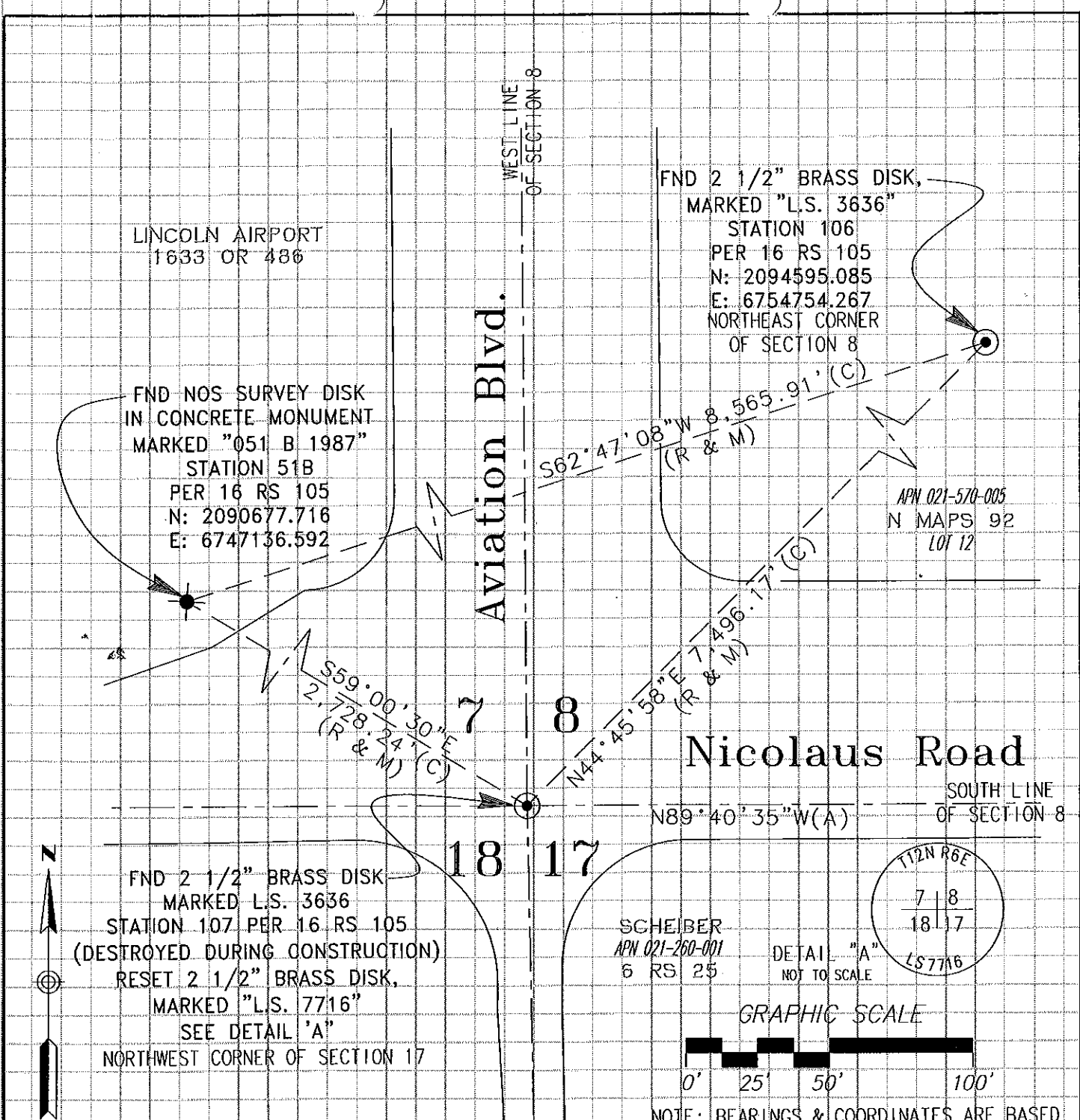
Signed Charles B. Grant Title COUNTY SURVEYOR

L.S. or R.C.E. Number 6158 Expiration Date 3-31-10



County Surveyor's Comment THIS C.R. IS REPLACED WITH 14 CR 04

BOOK 15 CORNER RECORDS PAGE 71 * SEE 14 CR 04



LINCOLN AIRPORT
1633 OR 486

FND NOS SURVEY DISK
IN CONCRETE MONUMENT
MARKED "051 B 1987"
STATION 51B
PER 16 RS 105
N: 2090677.716
E: 6747136.592

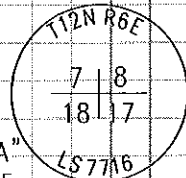
FND 2 1/2" BRASS DISK,
MARKED "L.S. 3636"
STATION 106
PER 16 RS 105
N: 2094595.085
E: 6754754.267
NORTHEAST CORNER
OF SECTION 8

APN 021-570-005
N MAPS 92
LOT 12

FND 2 1/2" BRASS DISK
MARKED L.S. 3636
STATION 107 PER 16 RS 105
(DESTROYED DURING CONSTRUCTION)
RESET 2 1/2" BRASS DISK,
MARKED "L.S. 7716"
SEE DETAIL "A"
NORTHWEST CORNER OF SECTION 17

SCHEIBER
APN 021-260-001
6 RS 25

DETAIL "A"
NOT TO SCALE




NOTE: BEARINGS & COORDINATES ARE BASED
ON 16 RS 105, PLACER COUNTY RECORDS.

REFERENCE

(A) BOOK 6 OF SURVEYS, PAGE 25

LEGEND

- FND FOUND
- NOS NETWORK OPERATING SYSTEM
- OR OFFICIAL RECORD
- RS RECORD OF SURVEY
- R & M RECORD (PER 16 RS 105)
AND MEASURED
- (C) CALCULATED PER 16 RS 105,
PLACER COUNTY RECORDS

CORNER RECORD STATION 107 PER 16 RS 105			
 MARK THOMAS & COMPANY, INC. Providing Engineering, Surveying, and Planning Services 7300 Folsom Boulevard, Suite 203 Sacramento, CA 95826 (916) 381-9100			
DRAWN BY RPM	APPROVED ON 11/24/09	JOB NO. 65-0177	PAGE 2
CKD BY AD	BY A. DeLEON	FILE NO.	OF 2
DATE 11/05/09	LS. NO. 7716	03/31/11	
SCALE 1"=50 FEET			

CORNER RECORD

COUNTY OF PLACER, CALIFORNIA

City of LINCOLN Document Number 20100015

Brief Legal Description CORNER COMMON TO SECTIONS 7, 8, 17 & 18, T.12N., R.6.E., M.D.M.

SEC 7	SEC 8
SEC 18	SEC 17

S.
T.
R.

CORNER TYPE

Government Corner Control
 Meander Property
 Rancho Other
 Date of Survey JUNE 11, 2010

COORDINATES

(Optional)
 N. 2089272.906
 E. 6749475.355
 Zone 2 Datum NAD83
 Elev. 117.730

T.12N., R.6.E.

Corner--- Left as found Found and tagged Established Reestablished Rebuilt

Identification and type of corner found: Evidence used to identify or procedure used to establish or reestablish corner:
THIS CORNER OF RECORD IS BEING REFILED TO CORRECT THE ELEVATION SHOWN ON THE CORNER OF RECORD, FILED IN BOOK 13 OF CORNER RECORDS, AT PAGE 71, COUNTY OF PLACER, CALIFORNIA.

A description of the physical condition of the monument as found and as set or reset: FOUND 2 1/2" BRASS DISK IN MONUMENT WELL, MARKED LS 7716. ALSO MARKED AS THE CORNER COMMON TO SECTIONS 7, 8, 17 & 18, T.12N., R.6.E., M.D.M., AS SHOWN ON 13 CR 71. ■ = SET CUT SQUARE ON CURB AT DRAIN INLET FOR VERTICAL REFERENCE ONLY. SEE PLAT ON REVERSE SIDE

SURVEYOR'S STATEMENT

This Corner Record was prepared by me or under my direction in conformance with the Professional Land Surveyors' Act

on November 12 2010

Signed Albert De Leon

(L.S.) or R.C.E. Number 7716 Expiration Date March 31, 2011



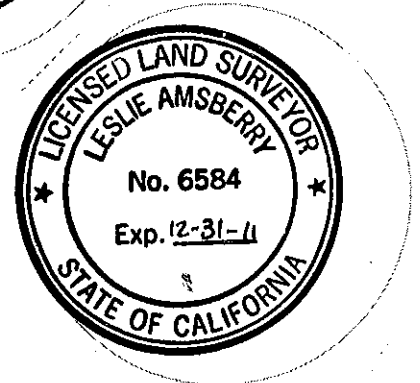
COUNTY SURVEYOR'S STATEMENT

This Corner Record was received _____ 20____

and examined and filed NOVEMBER 17 2010

Signed Leslie Amshery Title Deputy County Surveyor

L.S. or R.C.E. Number 6584 Expiration Date 12-31-11



County Surveyor's Comment _____

BOOK 14 CORNER RECORDS PAGE 04

LINCOLN AIRPORT
1633 OR 486

SET CUT SQUARE ON CURB AT DRAIN INLET
VERTICAL REFERENCE ONLY
ELEVATION: 116.305'

FND NOS SURVEY DISK IN CONCRETE MONUMENT
MARKED "051 B 1987"

STATION 51B
PER 16 RS 105 & 20 RS 159
N: 2090677.716
E: 6747136.592

Aviation Blvd.

WEST LINE OF SECTION 8

FND 2 1/2" BRASS DISK,
MARKED "L.S. 3636"

STATION 106
PER 16 RS 105 & 20 RS 159
N: 2094595.085
E: 6754754.267

NORTHEAST CORNER OF SECTION 8

APN 021-570-005
N MAPS 92
LOT 12

S62°47'08"W 8,565.91' (C)
(R & M)

N44°45'38"E 7,496.17' (C)
(R & M)

S59°00'30"E 2,728.24' (C)
(R & M)

S24°51'20"E 5.1' (M)

Nicolaus Road

SOUTH LINE OF SECTION 8

N89°40'35"W (A)

FND 2 1/2" BRASS DISK
MARKED L.S. 3636

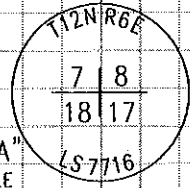
STATION 107 PER 16 RS 105 & 20 RS 159

(DESTROYED DURING CONSTRUCTION)
RESET 2 1/2" BRASS DISK,
MARKED "L.S. 7716" PER 13 CR 7
SEE DETAIL "A"

NORTHWEST CORNER OF SECTION 17

SCHEIBER
APN 021-260-001
6 RS 25

DETAIL "A"
NOT TO SCALE



GRAPHIC SCALE



NOTE: BEARINGS & COORDINATES ARE BASED ON 16 RS 105 & 20 RS 159, PLACER COUNTY RECORDS.

REFERENCE

(A) BOOK 6 OF SURVEYS, PAGE 25

LEGEND

- CR CORNER RECORD
- FND FOUND
- NOS NETWORK OPERATING SYSTEM
- OR OFFICIAL RECORD
- RS RECORD OF SURVEY
- R & M RECORD (PER 16 RS 105 & 20 RS 159) AND MEASURED
- (C) CALCULATED PER 16 RS 105 & 20 RS 159, PLACER COUNTY RECORDS

CORNER RECORD

STATION 107
PER 16 RS 105 & 20 RS 159



MARK THOMAS & COMPANY, INC.
Providing Engineering, Surveying, and Planning Services
7300 Folsom Boulevard, Suite 203
Sacramento, CA 95826
(916) 381-9100

DRAWN BY RPM	APPROVED ON 11/12/10	JOB NO. 55-0177	PAGE 2 OF 2
CKD BY AD	BY A DeLEON	FILE NO.	
DATE 11/12/10	LS NO. 7716 03/31/11		
SCALE 1"=50 FEET			