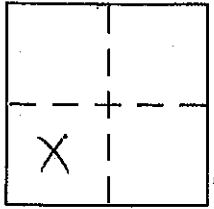


CORNER RECORD

Document Number 20090090

City of _____ County of PLACER, California

Brief Legal Description LOT 127, TALMONT ESTATES UNIT No. 2 SUB, I/MAPS/1, O.R.P.C.



CORNER TYPE

SEC. 13
T. 15N.
R. 16E.
M.D.B. & M.

Government Corner Control
 Meander Property
 Rancho Other
 Date of Survey 11-5-2009

COORDINATES (Optional)

N. _____
 E. _____
 Zone _____ NAD27 NAD83
 NAD83 Epoch _____
 Elev. _____
 Vert. Datum: NGVD29 NAVD88
 Meas. Units: Metric Imperial

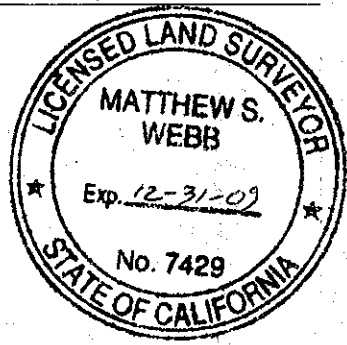
Corner - Left as found Found and tagged Established Reestablished Rebuilt

Identification and type of corner found: Evidence used to identify or procedure used to establish or reestablish the corner:
USED THE RECORD DIMENSIONS AND THE FOUND ORIGINAL MONUMENTS PER I/MAPS/1, O.R.P.C., TO REESTABLISH THE MISSING FRONT CORNERS OF LOT 127, AS SHOWN ON THE ACCOMPANYING PLAT.

A description of the physical condition of the monument as found and as set or reset:
SET 5/8" REBAR WITH YELLOW PLASTIC CAP MARKED LS 7429 AND SET A GIN SPIKE WITH BRASS WASHER STAMPED LS 742

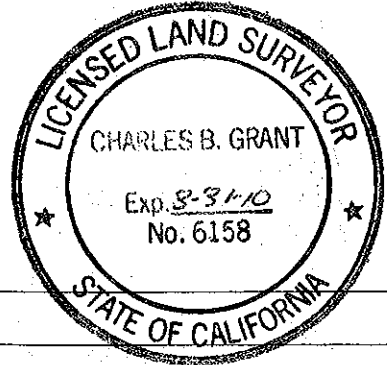
SURVEYOR'S STATEMENT

This Corner Record was prepared by me or under my direction in conformance with the Land Surveyor's Act on NOVEMBER 6, 2009
 Signed [Signature] P.L.S or R.C.E. No. 7429



COUNTY SURVEYOR'S STATEMENT

This Corner Record was received _____ and examined and filed DECEMBER 14 2009
 Signed [Signature] (P.L.S) or R.C.E. No. 6158
 Title COUNTY SURVEYOR LICENSE EXPIRES 3-31-10



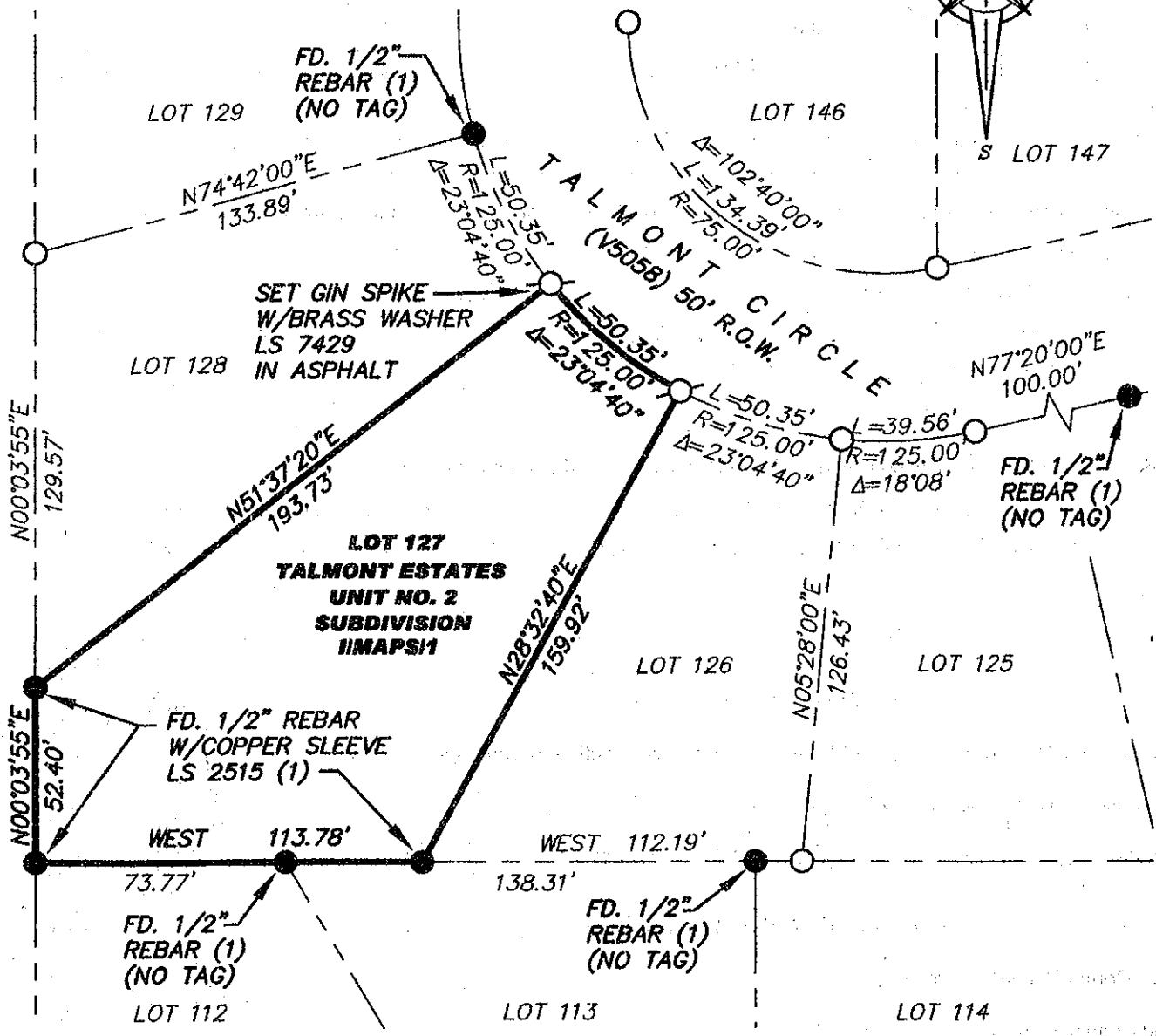
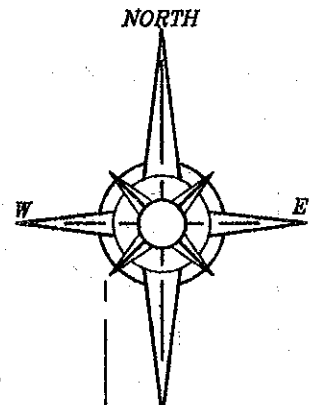
County Surveyor's Comment _____

BOOK 13 CORNER RECORDS, PAGE 72

PLAT OF SURVEY

LOT 127, TALMONT ESTATES UNIT NO. 2 SUBDIVISION, AS FILED IN BOOK 1 OF MAPS AT PAGE 1, OFFICIAL RECORDS PLACER COUNTY, CALIFORNIA. A PORTION OF THE S.W. 1/4 OF SECTION 13, TOWNSHIP 15 N., RANGE 16 E., M.D.B. & M.

SCALE 1" = 50' DATE OF SURVEY 11/5/2009



BOOK 13 CORNER RECORDS, PAGE 72

NOTE:

ALL BEARINGS AND DISTANCES SHOWN HEREON ARE RECORD PER 1/MAPS/1, O.R.P.C., NO MATERIAL DISCREPANCY WAS DISCOVERED

- FOUND MONUMENT AS SHOWN HEREON
- SET 5/8" REBAR WITH YELLOW PLASTIC CAP L.S. 7429 UNLESS OTHERWISE NOTED HEREON
- DIMENSION PT (NOTHING FOUND OR SET)
- (1) RECORD PER 1/MAPS/1, O.R.P.C.

J/N 1759.00