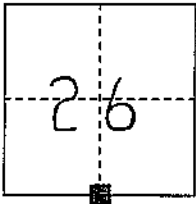


CORNER RECORD

COUNTY OF PLACER, CALIFORNIA

City of \_\_\_\_\_ Document Number 20100009

Brief Legal Description 1/4 CORNER SECTION 26/35 T.11N. R.7E. M.Q.M. 21-PM-27



S. 26

T. 11 N.

R. 7 E.

CORNER TYPE

Government Corner  Control   
Meander  Property   
Rancho  Other   
Date of Survey \_\_\_\_\_

COORDINATES

(Optional)

N. \_\_\_\_\_  
E. \_\_\_\_\_  
Zone \_\_\_\_\_ Datum \_\_\_\_\_  
Elev. \_\_\_\_\_

Corner--- Left as found  Found and tagged  Established  Reestablished  Rebuilt

Identification and type of corner found: Evidence used to identify or procedure used to establish or reestablish corner:  
FOUND U.S.B.L.M. BRASS CAP IN TRAVELED WAY OF CAVITT-STALLMAN ROAD, AT RECORD LOCATION PER PARCEL MAP No. P74404 AT BOOK 21 OF PARCEL MAPS, PAGE 27 TIED MONUMENT TO CONTROL LINE SURVEY IN 2004 PRIOR TO WATERLINE CONSTRUCTION. FOUND ADDITIONAL MONUMENTS PER 21-PM-27 AT RECORD LOCATIONS WITH NO MATERIAL DISCREPANCIES

A description of the physical condition of the monument as found and as set or reset:  
FROM RECORD MONUMENTS SET 3" MAG-NAIL WITH 1/4" BRASS WASHER AT RECORD LOCATION FOR SAID 1/4 CORNER.

SURVEYOR'S STATEMENT

This Corner Record was prepared by me or under my direction in conformance with the Professional Land Surveyors' Act on MARCH 12 2010.

Signed [Signature]

L.S. or R.C.E. Number 7887 Expiration Date 7/31/11

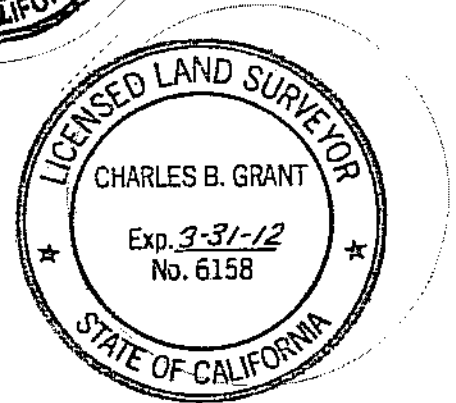


COUNTY SURVEYOR'S STATEMENT

This Corner Record was received \_\_\_\_\_ 20\_\_\_\_ and examined and filed APRIL 13 2010.

Signed Charles B. Grant Title COUNTY SURVEYOR

L.S. or R.C.E. Number 6158 Expiration Date 3-31-12



County Surveyor's Comment \_\_\_\_\_  
\_\_\_\_\_  
\_\_\_\_\_

BOOK 13 CORNER RECORDS PAGE 86

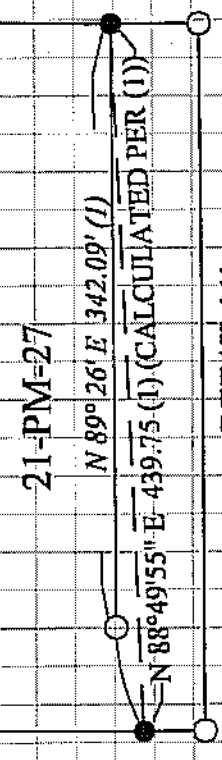
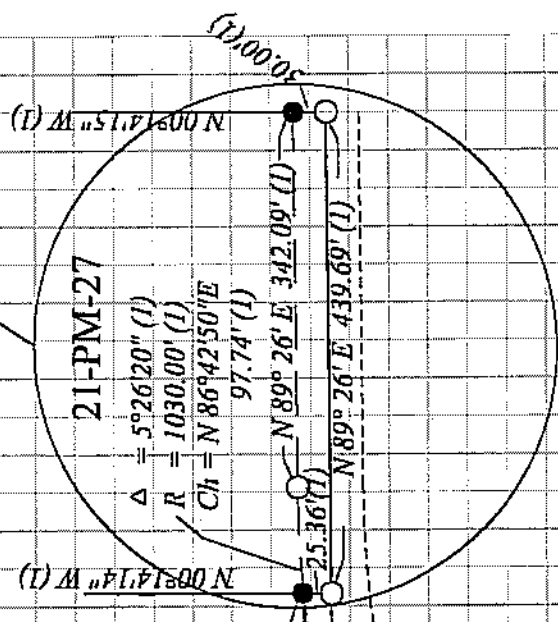


**LEGEND:**

- = DIMENSION POINT, NOTHING FOUND, NOTHING SET
- = FOUND 1" IRON PIPE-TAGGED L.S. 3333 at RECORD LOCATION PER 21-PM-27
- (1) = RECORD PER 21-PM-27

Fd. U.S.B.L.M. BRASS  
 CAP STAMPED FOR 1/4"  
 CORNER SECTION 26 #35  
 SET MAG-NAIL WITH  
 1-1/4" BRASS WASHER  
 STAMPED "PLACER CO  
 SURVEYOR"

SEE DETAIL 'A'



DETAIL 'A'  
 NOT TO SCALE

LAIRD Rd. (E-1073)

CAVITT-STALLMAN Rd. (D-1018)

N 87°48'28" E 894.04' (1) (CALCULATED PER (1))  
 N 89°26' E 893.53' (1)

AUBURN FOLSOM RD. (E-0086)