

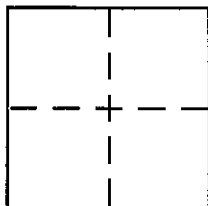
CORNER RECORD

Document Number 20100030

City of Kings Beach

County of Placer, California

Brief Legal Description LOTS 17 & 18, Block WX, Brockway Vista, D-16



CORNER TYPE

Government Corner Control
Meander Property
Rancho Other
Date of Survey May 2010

COORDINATES (Optional)

N. _____
E. _____
Zone _____ NAD27 NAD83
NAD83 Epoch _____
Elev. _____
Vert. Datum: NGVD29 NAVD88
Meas. Units: Metric Imperial

Corner - Left as found Found and tagged Established Reestablished Rebuilt

Identification and type of corner found: Evidence used to identify or procedure used to establish or reestablish the corner:

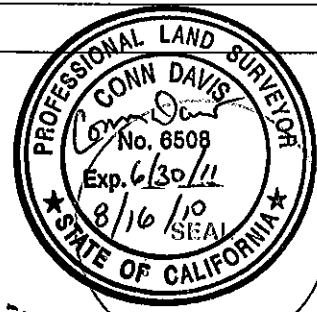
- ① Found 1/2" Rebar per 21/RS/15
- ② Found Iron Pipe per 21/RS/15

A description of the physical condition of the monument as found and as set or reset:

- ③ Set 5/8" Rebar w/cap 6508
- ④ Set PK Nail in CONC w/Tag 6508

SURVEYOR'S STATEMENT

This Corner Record was prepared by me or under my direction in conformance with the Land Surveyor's Act on Aug 16th, 2010
Signed Conn Davis P.L.S or R.C.E. No. PLS 6508



COUNTY SURVEYOR'S STATEMENT

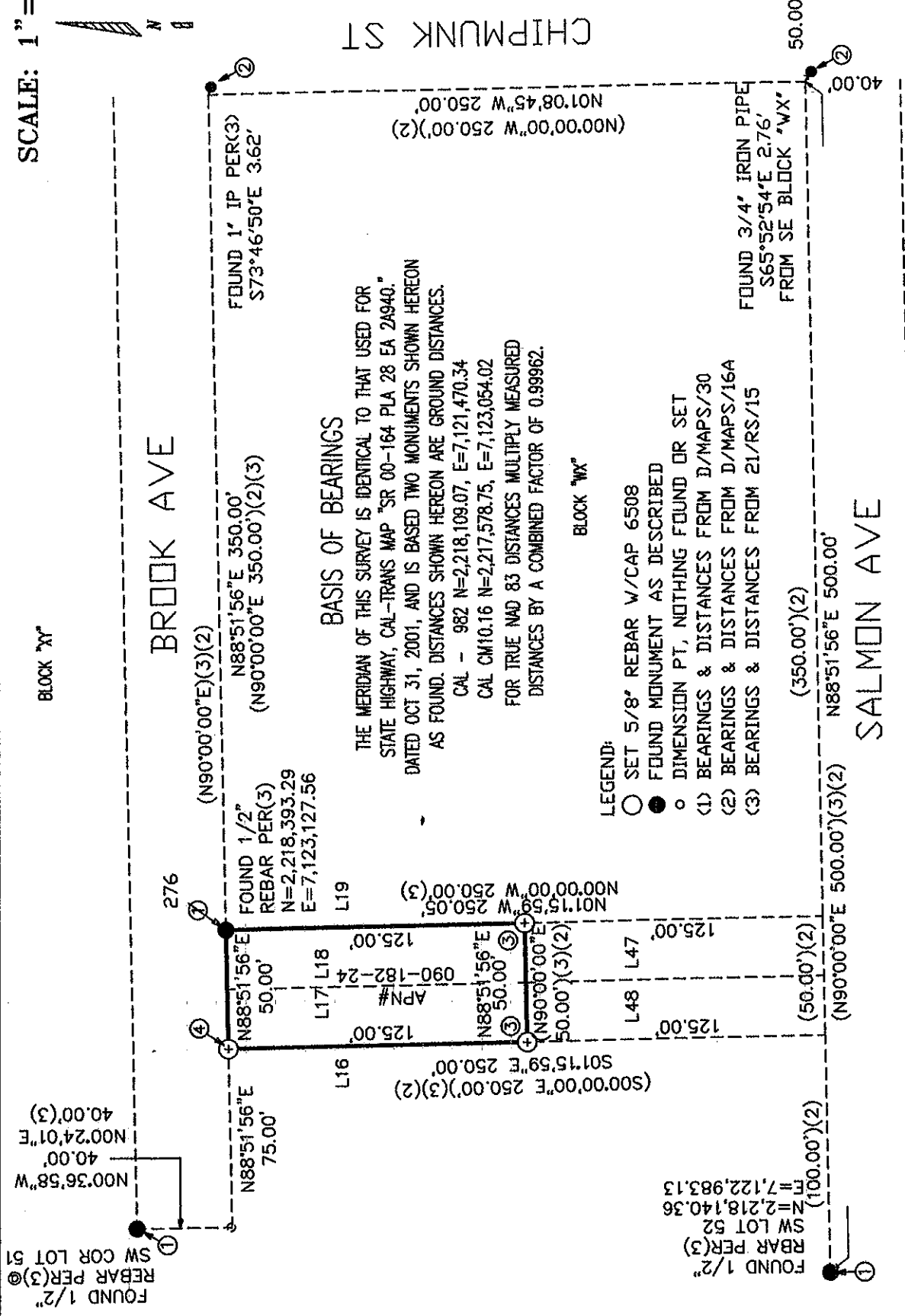
This Corner Record was received _____
and examined and filed AUGUST 19, 2010
Signed Leslie Amshury P.L.S or R.C.E. No. PLS 6584
Title Deputy County Surveyor



County Surveyor's Comment _____

BOOK 13, CORNER RECORDS, PAGE 93

SCALE: 1"=60'



BASIS OF BEARINGS

THE MERIDIAN OF THIS SURVEY IS IDENTICAL TO THAT USED FOR STATE HIGHWAY, CAL-TRANS MAP "SR 00-164 PLA 28 EA 2A940," DATED OCT 31, 2001, AND IS BASED TWO MONUMENTS SHOWN HEREON AS FOUND. DISTANCES SHOWN HEREON ARE GROUND DISTANCES.
 CAL - 982 N=2,218,109.07, E=7,121,470.34
 CAL CM10.16 N=2,217,578.75, E=7,123,054.02
 FOR TRUE MAD 83 DISTANCES MULTIPLY MEASURED DISTANCES BY A COMBINED FACTOR OF 0.99962.

LEGEND:

- SET 5/8" REBAR W/CAP 6508
- FOUND MONUMENT AS DESCRIBED
- DIMENSION PT, NOTHING FOUND OR SET
- (1) BEARINGS & DISTANCES FROM D/MAPS/30
- (2) BEARINGS & DISTANCES FROM D/MAPS/16A
- (3) BEARINGS & DISTANCES FROM 21/RS/15

BLOCK "WX"

(N00°00'00"W 250.00')(2)
 (N01°08'45"W 250.00')

FOUND 3/4" IRON PIPE
 S65°52'54"E 2.76'
 FROM SE BLOCK "WX"

BROOK AVE

SALMON AVE

CHIPMUNK ST

FOUND 1/2" REBAR PER(3) SW COR LOT 51
 N00°36'58"W 40.00'
 N00°24'01"E 40.00'(3)

FOUND 1/2" REBAR PER(3) SW LOT 52
 N=2,218,140.36
 E=7,122,983.13
 (100.00')(2)

FOUND 1/2" REBAR PER(3)
 N=2,218,393.29
 E=7,123,127.56

N01°15'59"W 250.05'
 N00°00'00"W 250.00'(3)

(350.00')(2)
 N88°51'56"E 500.00'
 (N90°00'00"E 500.00')(3)(2)

(N90°00'00"E)(3)(2)
 N88°51'56"E 350.00'
 (N90°00'00"E 350.00')(2)(3)

(S00°00'00"E 250.00')(3)(2)
 S01°15'59"E 250.00'

N88°51'56"E 50.00'
 (N90°00'00"E)(3)(2)
 125.00'
 125.00'
 125.00'

N01°15'59"W 250.05'
 N00°00'00"W 250.00'(3)

N88°51'56"E 50.00'
 (N90°00'00"E)(3)(2)
 125.00'
 125.00'
 125.00'

N01°15'59"W 250.05'
 N00°00'00"W 250.00'(3)

N88°51'56"E 50.00'
 (N90°00'00"E)(3)(2)
 125.00'
 125.00'
 125.00'

N01°15'59"W 250.05'
 N00°00'00"W 250.00'(3)

N88°51'56"E 50.00'
 (N90°00'00"E)(3)(2)
 125.00'
 125.00'
 125.00'

N01°15'59"W 250.05'
 N00°00'00"W 250.00'(3)

N88°51'56"E 50.00'
 (N90°00'00"E)(3)(2)
 125.00'
 125.00'
 125.00'

N01°15'59"W 250.05'
 N00°00'00"W 250.00'(3)

N88°51'56"E 50.00'
 (N90°00'00"E)(3)(2)
 125.00'
 125.00'
 125.00'

N01°15'59"W 250.05'
 N00°00'00"W 250.00'(3)

N88°51'56"E 50.00'
 (N90°00'00"E)(3)(2)
 125.00'
 125.00'
 125.00'

N01°15'59"W 250.05'
 N00°00'00"W 250.00'(3)

N88°51'56"E 50.00'
 (N90°00'00"E)(3)(2)
 125.00'
 125.00'
 125.00'

N01°15'59"W 250.05'
 N00°00'00"W 250.00'(3)

N88°51'56"E 50.00'
 (N90°00'00"E)(3)(2)
 125.00'
 125.00'
 125.00'

N01°15'59"W 250.05'
 N00°00'00"W 250.00'(3)

N88°51'56"E 50.00'
 (N90°00'00"E)(3)(2)
 125.00'
 125.00'
 125.00'

N01°15'59"W 250.05'
 N00°00'00"W 250.00'(3)

N88°51'56"E 50.00'
 (N90°00'00"E)(3)(2)
 125.00'
 125.00'
 125.00'

N01°15'59"W 250.05'
 N00°00'00"W 250.00'(3)

N88°51'56"E 50.00'
 (N90°00'00"E)(3)(2)
 125.00'
 125.00'
 125.00'

N01°15'59"W 250.05'
 N00°00'00"W 250.00'(3)

N88°51'56"E 50.00'
 (N90°00'00"E)(3)(2)
 125.00'
 125.00'
 125.00'

N01°15'59"W 250.05'
 N00°00'00"W 250.00'(3)

N88°51'56"E 50.00'
 (N90°00'00"E)(3)(2)
 125.00'
 125.00'
 125.00'

N01°15'59"W 250.05'
 N00°00'00"W 250.00'(3)

N88°51'56"E 50.00'
 (N90°00'00"E)(3)(2)
 125.00'
 125.00'
 125.00'

N01°15'59"W 250.05'
 N00°00'00"W 250.00'(3)

N88°51'56"E 50.00'
 (N90°00'00"E)(3)(2)
 125.00'
 125.00'
 125.00'

N01°15'59"W 250.05'
 N00°00'00"W 250.00'(3)

N88°51'56"E 50.00'
 (N90°00'00"E)(3)(2)
 125.00'
 125.00'
 125.00'

N01°15'59"W 250.05'
 N00°00'00"W 250.00'(3)

N88°51'56"E 50.00'
 (N90°00'00"E)(3)(2)
 125.00'
 125.00'
 125.00'

N01°15'59"W 250.05'
 N00°00'00"W 250.00'(3)

N88°51'56"E 50.00'
 (N90°00'00"E)(3)(2)
 125.00'
 125.00'
 125.00'

N01°15'59"W 250.05'
 N00°00'00"W 250.00'(3)

N88°51'56"E 50.00'
 (N90°00'00"E)(3)(2)
 125.00'
 125.00'
 125.00'

N01°15'59"W 250.05'
 N00°00'00"W 250.00'(3)

N88°51'56"E 50.00'
 (N90°00'00"E)(3)(2)
 125.00'
 125.00'
 125.00'

N01°15'59"W 250.05'
 N00°00'00"W 250.00'(3)

N88°51'56"E 50.00'
 (N90°00'00"E)(3)(2)
 125.00'
 125.00'
 125.00'

N01°15'59"W 250.05'
 N00°00'00"W 250.00'(3)

N88°51'56"E 50.00'
 (N90°00'00"E)(3)(2)
 125.00'
 125.00'
 125.00'

N01°15'59"W 250.05'
 N00°00'00"W 250.00'(3)

N88°51'56"E 50.00'
 (N90°00'00"E)(3)(2)
 125.00'
 125.00'
 125.00'

N01°15'59"W 250.05'
 N00°00'00"W 250.00'(3)

N88°51'56"E 50.00'
 (N90°00'00"E)(3)(2)
 125.00'
 125.00'
 125.00'

N01°15'59"W 250.05'
 N00°00'00"W 250.00'(3)

N88°51'56"E 50.00'
 (N90°00'00"E)(3)(2)
 125.00'
 125.00'
 125.00'

N01°15'59"W 250.05'
 N00°00'00"W 250.00'(3)

N88°51'56"E 50.00'
 (N90°00'00"E)(3)(2)
 125.00'
 125.00'
 125.00'

N01°15'59"W 250.05'
 N00°00'00"W 250.00'(3)

N88°51'56"E 50.00'
 (N90°00'00"E)(3)(2)
 125.00'
 125.00'
 125.00'

N01°15'59"W 250.05'
 N00°00'00"W 250.00'(3)

N88°51'56"E 50.00'
 (N90°00'00"E)(3)(2)
 125.00'
 125.00'
 125.00'

N01°15'59"W 250.05'
 N00°00'00"W 250.00'(3)

N88°51'56"E 50.00'
 (N90°00'00"E)(3)(2)
 125.00'
 125.00'
 125.00'

N01°15'59"W 250.05'
 N00°00'00"W 250.00'(3)

N88°51'56"E 50.00'
 (N90°00'00"E)(3)(2)
 125.00'
 125.00'
 125.00'

N01°15'59"W 250.05'
 N00°00'00"W 250.00'(3)

N88°51'56"E 50.00'
 (N90°00'00"E)(3)(2)
 125.00'
 125.00'
 125.00'

N01°15'59"W 250.05'
 N00°00'00"W 250.00'(3)

N88°51'56"E 50.00'
 (N90°00'00"E)(3)(2)
 125.00'
 125.00'
 125.00'

N01°15'59"W 250.05'
 N00°00'00"W 250.00'(3)

N88°51'56"E 50.00'
 (N90°00'00"E)(3)(2)
 125.00'
 125.00'
 125.00'

N01°15'59"W 250.05'
 N00°00'00"W 250.00'(3)

N88°51'56"E 50.00'
 (N90°00'00"E)(3)(2)
 125.00'
 125.00'
 125.00'

N01°15'59"W 250.05'
 N00°00'00"W 250.00'(3)

N88°51'56"E 50.00'
 (N90°00'00"E)(3)(2)
 125.00'
 125.00'
 125.00'

N01°15'59"W 250.05'
 N00°00'00"W 250.00'(3)

N88°51'56"E 50.00'
 (N90°00'00"E)(3)(2)
 125.00'
 125.00'
 125.00'

N01°15'59"W 250.05'
 N00°00'00"W 250.00'(3)

N88°51'56"E 50.00'
 (N90°00'00"E)(3)(2)
 125.00'
 125.00'
 125.00'

N01°15'59"W 250.05'
 N00°00'00"W 250.00'(3)

N88°51'56"E 50.00'
 (N90°00'00"E)(3)(2)
 125.00'
 125.00'
 125.00'

N01°15'59"W 250.05'
 N00°00'00"W 250.00'(3)

N88°51'56"E 50.00'
 (N90°00'00"E)(3)(2)
 125.00'
 125.00'
 125.00'

N01°15'59"W 250.05'
 N00°00'00"W 250.00'(3)

N88°51'56"E 50.00'
 (N90°00'00"E)(3)(2)
 125.00'
 125.00'
 125.00'

N01°15'59"W 250.05'
 N00°00'00"W 250.00'(3)

N88°51'56"E 50.00'
 (N90°00'00"E)(3)(2)
 125.00'
 125.00'
 125.00'

N01°15'59"W 250.05'
 N00°00'00"W 250.00'(3)

N88°51'56"E 50.00'
 (N90°00'00"E)(3)(2)
 125.00'
 125.00'
 125.00'

N01°15'59"W 250.05'
 N00°00'00"W 250.00'(3)

N88°51'56"E 50.00'
 (N90°00'00"E)(3)(2)
 125.00'
 125.00'
 125.00'

N01°15'59"W 250.05'
 N00°00'00"W 250.00'(3)

N88°51'56"E 50.00'
 (N90°00'00"E)(3)(2)
 125.00'
 125.00'
 125.00'

N01°15'59"W 250.05'
 N00°00'00"W 250.00'(3)

N88°51'56"E 50.00'
 (N90°00'00"E)(3)(2)
 125.00'
 125.00'
 125.00'

N01°15'59"W 250.05'
 N00°00'00"W 250.00'(3)

N88°51'56"E 50.00'
 (N90°00'00"E)(3)(2)
 125.00'
 125.00'
 125.00'

N01°15'59"W 250.05'
 N00°00'00"W 250.00'(3)

N88°51'56"E 50.00'
 (N90°00'00"E)(3)(2)
 125.00'
 125.00'
 125.00'

N01°15'59"W 250.05'
 N00°00'00"W 250.00'(3)

N88°51'56"E 50.00'
 (N90°00'00"E)(3)(2)
 125.00'
 125.00'
 125.00'

N01°15'59"W 250.05'
 N00°00'00"W 250.00'(3)

N88°51'56"E 50.00'
 (N90°00'00"E)(3)(2)
 125.00'
 125.00'
 125.00'

N01°15'59"W 250.05'
 N00°00'00"W 250.00'(3)

N88°51'56"E 50.00'
 (N90°00'00"E)(3)(2)
 125.00'
 125.00'
 125.00'

N01°15'59"W 250.05'
 N00°00'00"W 250.00'(3)

N88°51'56"E 50.00'
 (N90°00'00"E)(3)(2)
 125.00'
 125.00'
 125.00'

N01°15'59"W 250.05'
 N00°00'00"W 250.00'(3)

N88°51'56"E 50.00'
 (N90°00'00"E)(3)(2)
 125.00'
 125.00'
 125.00'

N01°15'59"W 250.05'
 N00°00'00"W 250.00'(3)

N88°51'56"E 50.00'
 (N90°00'00"E)(3)(2)
 125.00'
 125.00'
 125.00'

N01°15'59"W 250.05'
 N00°00'00"W 250.00'(3)

N88°51'56"E 50.00'
 (N90°00'00"E)(3)(2)
 125.00'
 125.00'
 125.00'

N01°15'59"W 250.05'
 N00°00'00"W 250.00'(3)

N88°51'56"E 50.00'
 (N90°00'00"E)(3)(2)
 125.00'
 125.00'
 125.00'

N01°15'59"W 250.05'
 N00°00'00"W 250.00'(3)

N88°51'56"E 50.00'
 (N90°00'00"E)(3)(2)
 125.00'
 125.00'
 125.00'

N01°15'59"W 250.05'
 N00°00'00"W 250.00'(3)

N88°51'56"E 50.00'
 (N90°00'00"E)(3)(2)
 125.00'
 125.00'
 125.00'