

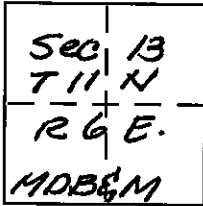
CORNER RECORD

Document Number 2010 0020

City of ROCKLIN

County of PLACER, California

Brief Legal Description LOT #14, SUNSET HILL, BOOK "H", MAPS, PAGE 30, P.C.R.



CORNER TYPE

Government Corner Control
 Meander Property
 Rancho Other
 Date of Survey July 3 2010

COORDINATES (Optional)

N. _____
 E. _____
 Zone _____ NAD27 NAD83
 NAD83 Epoch _____
 Elev. _____
 Vert. Datum: NGVD29 NAVD88
 Meas. Units: Metric Imperial

Corner - Left as found Found and tagged Established Reestablished Rebuilt

Identification and type of corner found: Evidence used to identify or procedure used to establish or reestablish the corner:

FOUND City of ROCKLIN, BRASS CAP MONUMENTS IN Well ON E. of STREET. Checked For Alignment AND DISTANCE. per Record Map.
FOUND Original 1/2" Iron pin, down 12" No Tag @ the Most NORTH CORNER of Lot 14, Placed 1/8" Tag #3475. Set 3/4" RB W/ Cap LS #3475. @ Most West Corner, Set 3/4" RB Caped LS #3475 Reference MONUMENTS, on P.L. Extended Sly. To Top BACK of Sidewalk.

A description of the physical condition of the monument as found and as set or reset:

ALL FOUND MONUMENTS ARE IN GOOD CONDITION, AND FOUND TO BE IN Record Position, Searched Adjacent lots For Corners, NOTHING FOUND or Set.

SURVEYOR'S STATEMENT

This Corner Record was prepared by me or under my direction in conformance with the Land Surveyor's Act on July 3, 2010

Signed William Edward Mitchell P.L.S or R.C.E. No. #3475.



COUNTY SURVEYOR'S STATEMENT

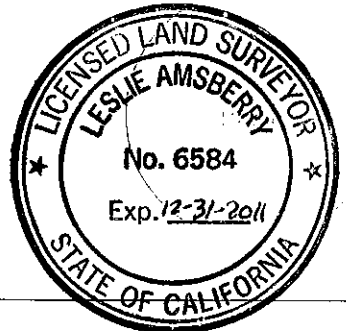
This Corner Record was received _____

and examined and filed SEPTEMBER 8, 2010

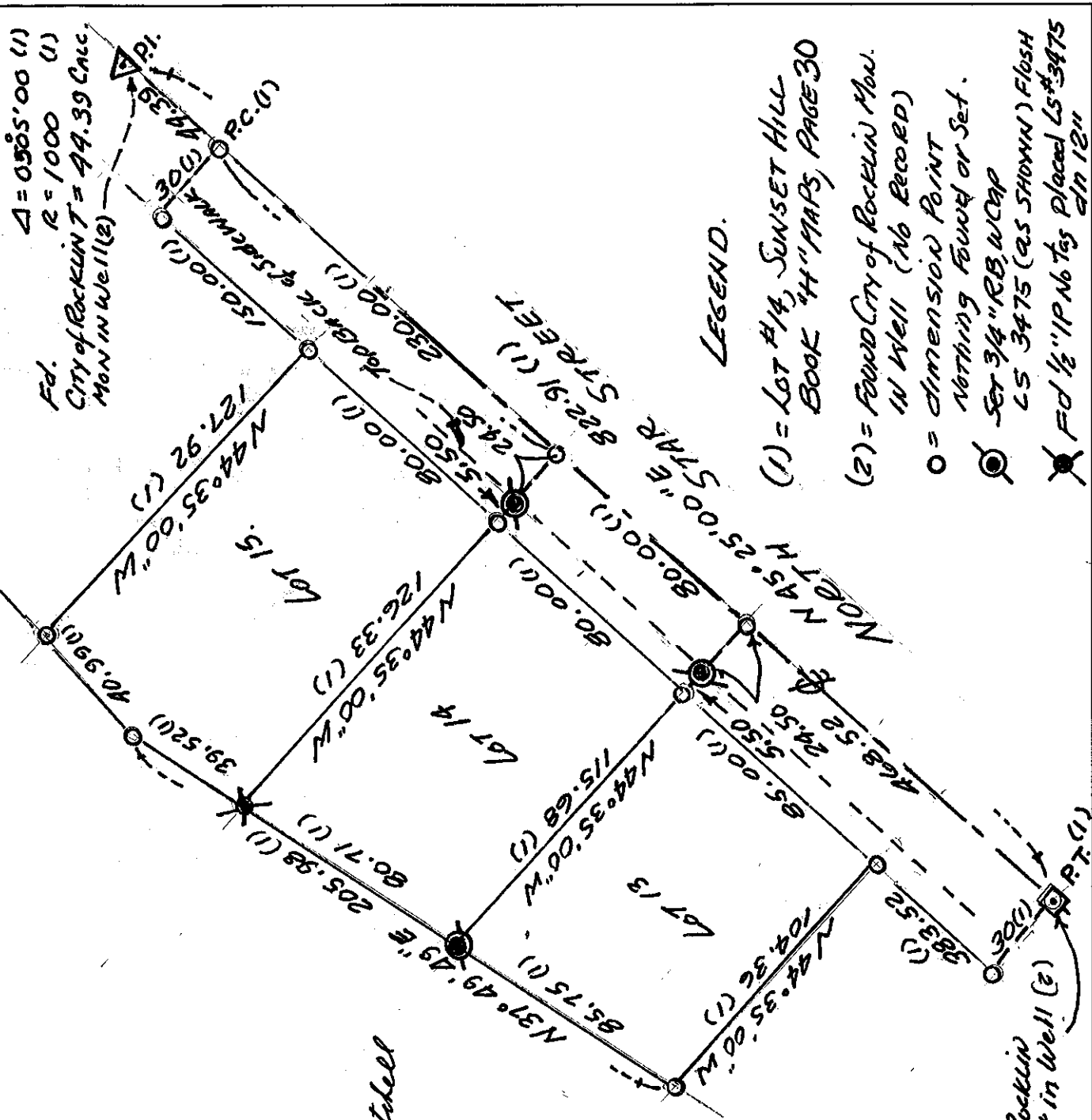
Signed Leslie Amsherry (P.L.S) or R.C.E. No. 6584

Title Deputy County Surveyor

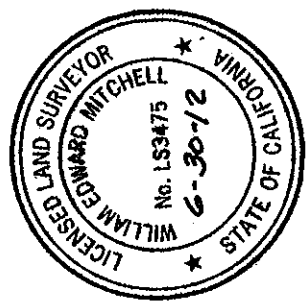
County Surveyor's Comment _____



BOOK 13, CORNER RECORDS, PAGE 74



$\Delta = 0585'00 (1)$
 $R = 1000 (1)$
 City of Rocklin T = 44.39 Calc.
 Mon in Well (2)



William E Mitchell
 7-3-2010

LEGEND.

- (1) = LOT #14, SUNSET HILL BOOK "H" MAPS, PAGE 30
- (2) = FOUND CITY OF ROCKLIN MON. IN WELL (NO RECORD)
- = DIMENSION POINT NOTHING FOUND OR SET.
- ⊙ = SET 3/4" RB, WCAP LS 3475 (AS SHOWN) FLOSH
- ⊗ = FD 1/2" IP No tags placed LS #3475 dn 12"

FD City of Rocklin
 Monument in Well (2)