

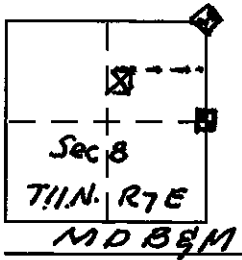
CORNER RECORD

Document Number 2010 0021

City of TOWN OF LOOMIS

County of PLACER, California

Brief Legal Description LOT "A" 10 P.M. 84 P.C.E.



CORNER TYPE

Government Corner Control
 Meander Property
 Rancho Other
 Date of Survey 7-10-2010

COORDINATES (Optional)

N. _____
 E. _____
 Zone _____ NAD27 NAD83
 NAD83 Epoch _____
 Elev. _____
 Vert. Datum: NGVD29 NAVD88
 Meas. Units: Metric Imperial

Corner - Left as found Found and tagged Established Reestablished Rebuilt

Identification and type of corner found: Evidence used to identify or procedure used to establish or reestablish the corner:
FOUND E. 1/4 COR. SEC 8, AND NE. COR. SEC 8, AS SHOWN 10 PM 84
CORNERS IN GOOD CONDITION, POSITION AS SHOWN 10 PM 84
FOUND ALL CORNERS OF LOT "A", 10 PM 84 AT. RECORDED POSITION
PER 10 PM 84.

A description of the physical condition of the monument as found and as set or reset:
ALL MONUMENTS WERE FOUND TO BE IN GOOD CONDITION.
LOT CORNERS WERE FOUND DA. 6" FROM SURFACE. IN
GOOD CONDITION WITH LS TAGS 3851, EXCEPT FOR SOUTH WEST
CORNER, NO TAG, PLACED LS TAG #3475

SURVEYOR'S STATEMENT

This Corner Record was prepared by me or under my direction in conformance with the Land Surveyor's Act on 7-10-2010

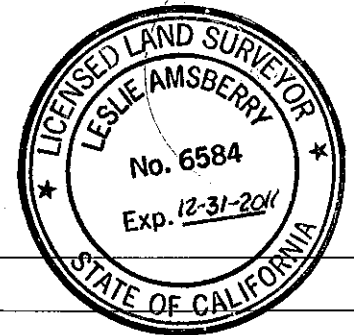
Signed William J Mitchell P.L.S or R.C.E. No. PLS # 3475.



COUNTY SURVEYOR'S STATEMENT

This Corner Record was received _____ and examined and filed SEPTEMBER 8, 2010

Signed Leslie Ambery (P.L.S) or R.C.E. No. 6584
 Title DEPUTY COUNTY SURVEYOR



County Surveyor's Comment _____

BOOK 13, CORNER RECORDS, PAGE 95

NOTE:
 ALL BEARINGS, DISTANCES
 AND FOUND MONUMENTS
 SHOW HEREON ARE RECORD
 PER 10 PM 84 EXCEPT
 AS NOTED.

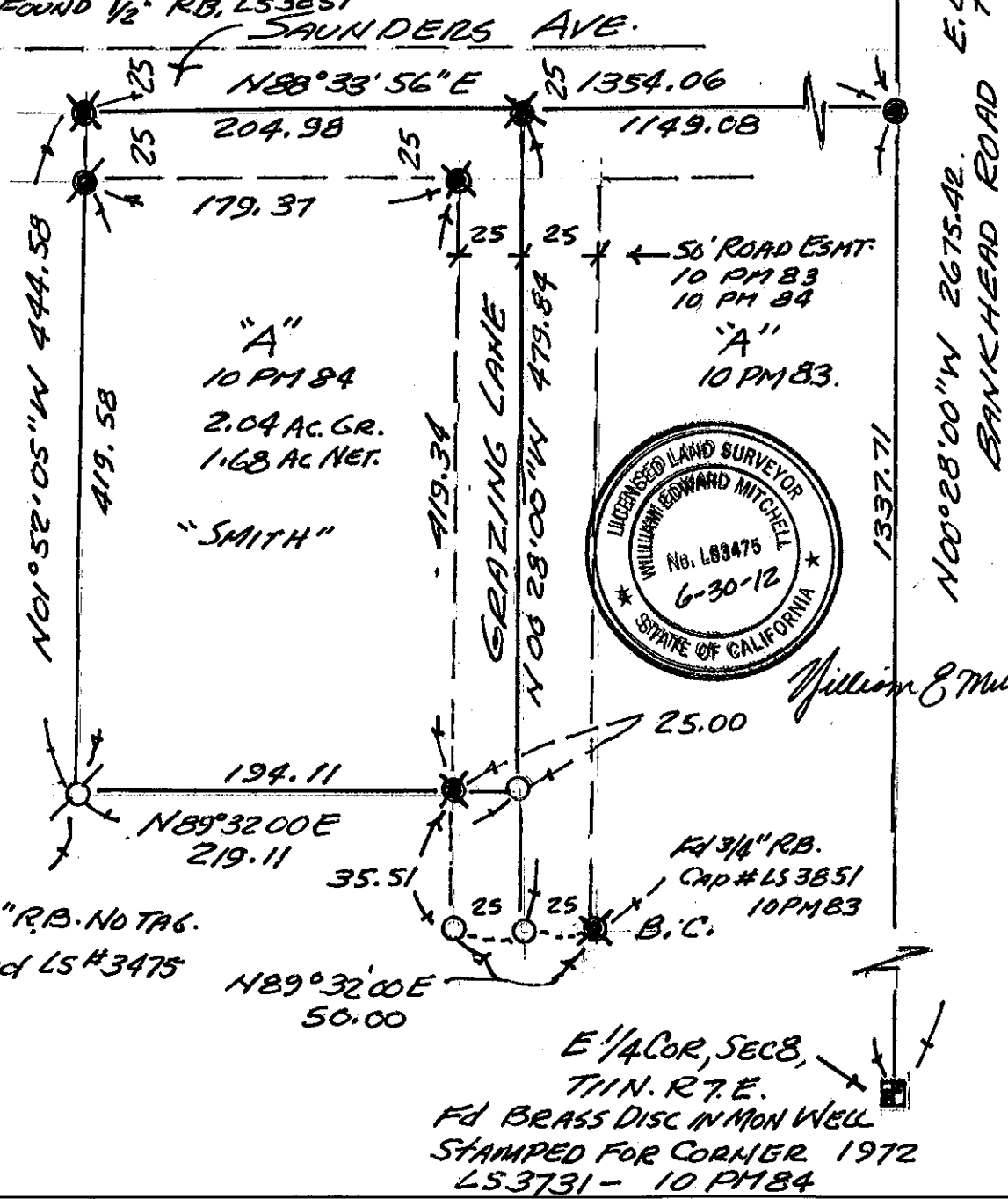
- = NOTHING Fd or set.
- = Fd "C" NAIL NO RECORD
- ✱ = FOUND 3/4" R.B. LS 3851
- ✱ = FOUND 1/2" R.B. LS 3851

(No. SCALE)



N.E. COR
 SEC. 8, T11N
 R. 7E.

Fd BRASS DISC
 IN CONC. MARKED
 FOR CORNER
 1972
 RCE 17300.
 10 PM 84.



Fd 1/2" R.B. NO TAG.
 Placed LS #3475
 TAG.

N89°32'00"E
 50.00

E 1/4 COR, SEC 8,
 T11N. R. 7E.
 Fd BRASS DISC IN MON WELL
 STAMPED FOR CORNER 1972
 LS 3731 - 10 PM 84