

## Placer County Service Systems By Department and Cost Center

### Administration & Financial System

**Assessor**

Assessor Services

**Auditor-Controller**

Auditor-Controller  
Workday Support Organization

**County Clerk-Recorder / Registrar**

Clerk-Recorder-Elections

**County Counsel**

County Counsel Services

**County Executive Office**

County Executive Office Administration  
Public Information  
Board of Supervisors  
Clerk of the Board of Supervisors  
Economic Development  
Risk Management  
Document Solutions  
Procurement  
Revenue Services  
Food Services  
Finance & Budget Office  
Financial & Business Operations

**Human Resources**

Benefit Administration  
Dental & Vision  
Human Resources Services  
Unemployment Insurance  
Workers Compensation  
Organizational Effectiveness and Employee Support  
Administration and Labor Relations

**Information Technology**

Countywide Radio Systems  
Information Technology

**Treasurer-Tax Collector**

Treasurer / Tax Collector  
mPOWER

### Community & Cultural System

**Agricultural Commissioner**

Farm Advisor

**Facilities Management**

Placer County Museums

**Library**

County Library

**Parks and Open Space**

Parks and Grounds Maintenance

### Health & Human Support System

**Child Support Services**

Child Support Services

**Health & Human Services**

HHS Administration  
Adult Systems of Care  
Children Systems of Care  
Human Services  
Client Aid  
Housing - HHS  
Public Health  
Environmental Health  
Animal Services  
Veterans Services

### Land Use System

**Agricultural Commissioner / Sealer**

Agricultural Commissioner / Sealer  
Fish & Game Commission

Regional Forest Health

**Community Development Resource Agency**

Administration & Fiscal  
Building Services  
Engineering & Surveying  
Planning Services  
Community Development Housing  
Community Development Grants & Loans  
PCCP Administration

**Facilities Management**

Administration  
Building Maintenance  
Real Estate Services

**Public Works**

Administration  
Eastern Regional Landfill  
Engineering and Transportation  
Environmental Utilities  
Road Maintenance  
Stormwater and Floodplain Management  
Flood Control  
Special Aviation  
Fleet Operations  
Placer County Transit  
Solid Waste Management  
Tahoe Area Regional Transit

**Capital Facility Projects**

**Facilities Management**

Capital Improvements  
Capital Projects

**Parks and Open Space**

Parks & Grounds Capital Improvements

**Public Works**

Environmental Utilities - Capital Improvements

### Public Protection System

**County Executive Office**

Emergency Services  
County Fire  
Criminal Justice - CEO  
Criminal Justice Other Programs

**District Attorney**

District Attorney Services

**Probation**

Probation Services

**Sheriff-Coroner-Marshall**

Grants Program  
Tahoe Operations  
Protection & Prevention  
Sheriff Administration  
Support Services  
Auburn Jail  
South Placer Jail  
Automated Mobile & Fixed Fingerprinting  
Placer Auto Theft Task Force

## Functions By Department And Cost Center

As Defined By The State Controller's Office  
Consistent With The Annual Report

### GOVERNMENTAL ACTIVITIES

#### General Government

**Assessor**

**Auditor-Controller**

Auditor-Controller  
Workday Support Organization

**Community Development Resource Agency**

Engineering & Surveying  
PCCP Administration

**County Counsel**

**County Executive Office**

Board of Supervisors  
Clerk of the Board of Supervisors  
County Executive Office Administration  
Document Solutions  
Economic Development  
Food Services  
Finance and Budget Office  
Financial and Business Operations  
Procurement  
Public Information Office  
Revenue Services  
Risk Management

**County Executive Office Non-Departmental**

Appropriation for Contingencies  
Community and Agency Support  
Contribution to Facilities and Infrastructure  
Contribution to HHS  
Contribution to Library  
Tahoe Economic and Community Enhancement  
Open Space  
Other Debt Service

**Facilities Management**

Administration  
Building Maintenance  
Real Estate Services

**Human Resources**

Administration and Labor Relations  
Benefit Administration  
Dental & Vision  
Human Resources Services  
Organizational Effectiveness/Employee Support  
State Unemployment Insurance  
Workers Compensation Insurance

**Information Technology**

Information Technology Services  
Countywide Radio Systems

**Public Works**

Administration  
Fleet Operations

**Treasurer-Tax Collector**

Treasurer - Tax Collector

#### Public Protection

**Agricultural Commissioner/Sealer**

Agricultural Commissioner/Sealer  
Fish and Game  
Regional Forest Health

**Child Support Services**

**Community Development Resource Agency**

Administration & Fiscal  
Building Services  
Planning Services

**County Clerk-Recorder-Elections**

**County Executive Office**

Emergency Services  
County Fire

**County Executive Office Non-Departmental**

Criminal Justice CEO  
Criminal Justice Other Programs  
Contribution to Public Safety

**District Attorney**

**Health and Human Services**

Animal Services

**Probation**

**Public Works**

Stormwater and Floodplain Management

**Sheriff-Coroner-Marshall**

Grants Program  
Tahoe Operations  
Protection & Prevention  
Sheriff Administration  
Support Services  
Auburn Jail  
South Placer Jail  
Automated Mobile & Fixed Fingerprint  
Placer Regional Auto Theft Task Force

#### Public Ways & Facilities

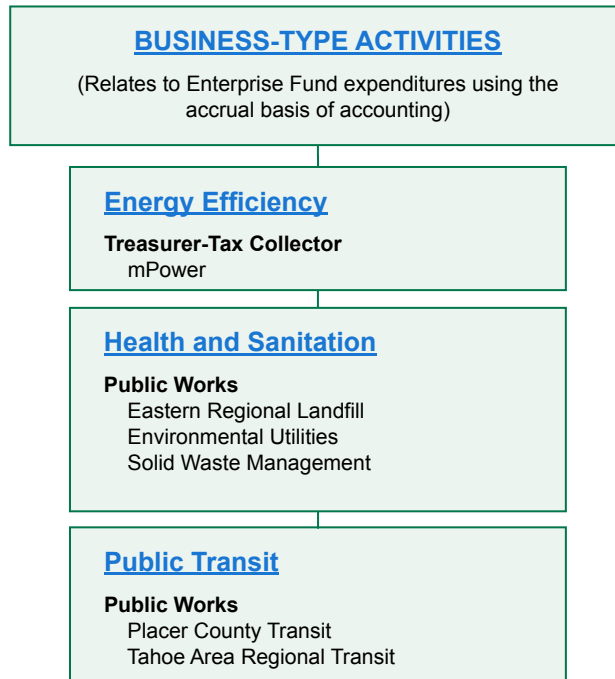
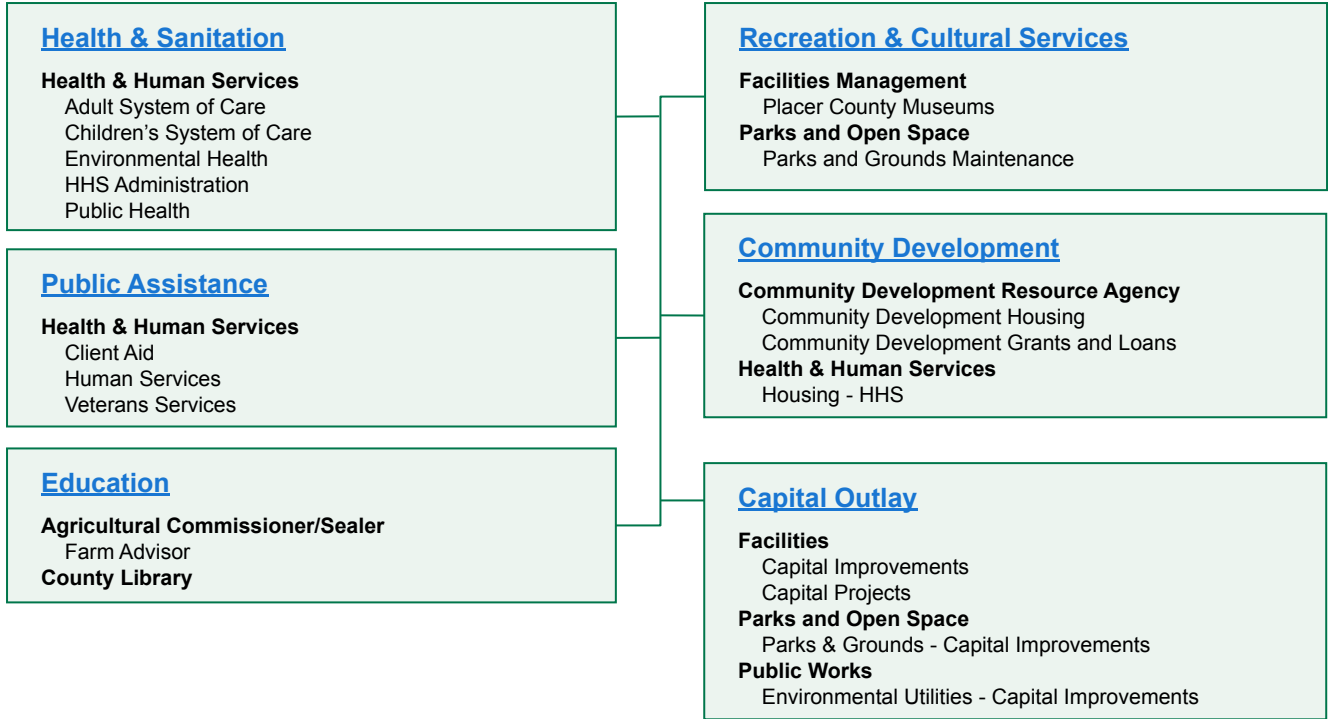
**Public Works**

Special Aviation  
Engineering & Transportation  
Road Maintenance

## Functions By Department And Cost Center

As Defined By The State Controller's Office  
Consistent With The Annual Report

### GOVERNMENTAL ACTIVITIES



## Placer County Fund Structure By Department and Cost Center

### **FD10000 General Fund**

**Agriculture Department**

- Agricultural Commissioner/Sealer
- Farm Advisor
- Regional Forest Health

**Assessor**

- Assessor

**Auditor-Controller**

- Auditor-Controller

**County Clerk-Recorder / Registrar**

- Clerk-Recorder-Elections

**Community Development Resource Agency**

- Administration & Fiscal
- Building Services
- Engineering & Surveying
- Planning Services
- PCCP Administration

**County Counsel**

- County Counsel Services

**County Executive Office**

- Board of Supervisors
- Clerk of the Board
- Community and Agency Support
- Contingencies
- Contribution to Other Debt Service
- County Executive Office
- Criminal Justice Other Programs
- Economic Development
- Emergency Services
- Finance & Budget Office
- Financial & Business Operations
- General Fund Contribution - Facilities and Infrastructure
- General Fund Contribution - HHS
- General Fund Contribution - Library
- General Fund Contribution Public Safety
- Procurement Services
- Public Information Office
- Revenue Services

**Parks and Open Space**

- Parks & Grounds Maintenance

**Public Works**

- DPW Administration
- Stormwater and Floodplain Management

**Facilities Management**

- Capital Improvements - General Fund
- Facilities Management Administration
- Placer County Museums
- Real Estate Services

**Human Resources**

- Administration and Labor Relations
- Organizational Effectiveness and Employee Support
- Talent Acquisition and Department Support

**Treasurer- Tax**

- Treasurer-Tax Collector

### **FD10100 Public Safety Fund**

**County Executive Office**

- Criminal Justice CEO

**District Attorney**

- District Attorney

**Probation Department**

- Probation

**Sheriff's Office**

- Auburn Jail
- Grants Program
- Protection & Prevention
- Sheriff Administration
- South Placer Jail
- Support Services
- Tahoe Operations

### **FD10011 Open Space Fund**

**County Executive Office**

- Open Space

### **FD10020 Child Support Services Fund**

**Child Support Services Department**

- Child Support Services

### **FD10050 HHS - Special Revenue Grant Fund**

**Health & Human Services**

- Adult Systems of Care
- Children Systems of Care
- Environmental Health
- HHS Administration
- Public Health

### **FD10055 General Fund Grants**

**County Executive Office**

- Emergency Services

### **FD10201 Tahoe Economic Community Enhancement Fund**

**County Executive Office**

- Tahoe Economic and Community Enhancement

## Placer County Fund Structure By Department and Cost Center

### **FD10303 HHS - SPR Operating Fund**

**Health & Human Services**  
Adult Systems of Care  
Animal Services  
Children Systems of Care  
Client Aid  
Environmental Health  
HHS Administration  
Human Services  
Public Health  
Veterans Services

### **FD14502 Community Revitalization Fund**

**Community Development Resource Agency Department**  
Community Development Grants & Loans

### **FD11100 Low & Moderate Income Housing Fund**

**Community Development Resource Agency Department**  
CDRA - Housing

### **FD14504 Special Aviation Fund**

**Public Works**  
Blue Canyon Airport

### **FD14505 DMV Special Collections Fund**

**Sheriff's Office**  
Automated Mobile & Fixed Fingerprinting  
Placer Auto Theft Task Force

### **FD12100 Road Fund**

**Public Works**  
Engineering  
Road Maintenance

### **FD14506 Fish and Game Fund**

**Agriculture Department**  
Fish and Game

### **FD13100 Capital Projects Fund**

**Parks and Open Space**  
Parks & Grounds - Capital Improvements  
**Public Works**  
Environmental Utilities - Capital Improvements  
**Facilities Management**  
Capital Projects

### **FD14507 Fire Protection Fund**

**County Executive Office**  
County Fire

### **FD14000 Debt Services Fund**

**County Executive Office**  
Other Debt Services

### **FD14509 County Library Fund**

**Library Department**  
County Library

### **FD14501 Placer County Housing Authority**

**Health and Human Services Department**  
Housing - HHS

# Administration & Financial System

**Assessor**

**Auditor-Controller**

**County Clerk-Recorder**

**County Counsel**

**County Executive Office**

**Human Resources**

**Information Technology**

**Treasurer-Tax Collector**

## Administration and Financial Services

### System Goal

Placer County builds public trust in government by providing the leadership, workforce, infrastructure, technology, financial, and administrative support necessary to produce quality programs and services that make a difference in people’s lives and demonstrate good value to taxpayers.

### Community Results

Placer County provides quality leadership and oversight to all programs, services, and activities.

Placer County demonstrates integrity and accountability in its collection, investment, accounting, and management of government funds, and its financial and budget practices help to maintain the County’s overall financial health.

Technology is reliable and effectively used to improve workforce efficiency, strengthen internal and external communication, and enhance service delivery to constituents.

Employees are well trained, receive competitive pay and benefits, and are highly satisfied with Placer County as their employer.

Placer County receives recognition for innovation and service excellence; customers are highly satisfied with County services.

County infrastructure is well planned and maintained, and meets the needs for effective and efficient service delivery.

Voter registration, election processes, and document archiving will be of the highest quality, integrity, and accuracy.

The County measures and achieves results and provides clear, relevant, and meaningful information to elected officials and constituents.

# **Community & Cultural System**

**Agricultural Commissioner /  
Sealer Weights & Measures  
Facilities Management  
Library  
Parks and Open Space**



## Community and Cultural Services

### System Goal

Placer County ensures that County recreational, educational, and cultural services reflect the varied interests of our community; honor our rich tradition and heritage; and preserve the important historical, cultural, and environmental resources of our region.

### Community Results

Placer County provides residents and visitors with ample access to recreational, educational, and cultural opportunities.

Residents are highly satisfied with County recreational, educational, and cultural programs and services.

Residents regularly attend and participate in community and cultural events.

Placer County's tradition and heritage and its important historical, cultural, and environmental resources are preserved.

# Health & Human Support System

**Child Support Services  
Health & Human Services**

## Health & Human Support Services

### System Goal

Placer County works collaboratively with community partners and federal, state, and local governments to provide integrated, easily accessible, and results-based services that protect the general health and well-being of our communities and vulnerable populations, and supports individual and family efforts to achieve and maintain independence and self-sufficiency.

### Community Results

Children are financially supported and cared for, and enter school healthy and ready to learn.

Families and individuals are assisted in attaining the knowledge, skills, abilities, and support necessary to achieve and maintain independence and self-sufficiency.

Our vulnerable populations are well protected, reports of abuse and neglect receive timely response and investigation, re-abuse rates are low, and mentally ill individuals receive care and support.

Quality education programs, inspection activities, and community clinic services support the health and safety of County residents and visitors.

Individuals with substance abuse and dependency issues are provided high quality treatment opportunities.

# Land Use System

**Agricultural Commissioner /**

**Sealer Weights & Measures**

**Community Development Resource Agency**

**Facilities Management**

**Public Works**

## Land Use Services

### System Goal

Placer County facilitates responsible growth and development that ensures economic health and prosperity; a safe and reliable infrastructure; and well-planned communities in which to live, work, and enjoy leisure activities; while protecting and preserving the environment, open spaces, and its rich cultural heritage.

### Community Results

Land use planning, development, and services are responsive to community needs.

The natural environment, open space, and agricultural lands are preserved for the use and enjoyment of current and future Placer County residents and visitors.

The County facilitates the development of transportation and roadway systems that improve safety, reduce congestion, and support and encourage economic development.

Air and water are clean, attainment goals for clean air and water are met, and sufficient water availability is maintained.

The County attracts and expands environmentally sound industries to ensure jobs for residents and growth of a strong and diverse tax base.

# Public Protection System

**County Executive Office**

**District Attorney**

**Probation**

**Sheriff-Coroner-Marshal**

## Public Protection Services

### System Goal

Placer County continues to ensure safe communities in which to live, work, and enjoy recreational activities by providing efficient, effective, integrated, and prevention-oriented criminal justice and emergency response systems.

### Community Results

The County will continue to maintain low rates of crime, personal injury, and loss of life and property; people feel safe in their communities.

The County justice agencies work collaboratively among themselves and with the community to develop appropriate and effective crime prevention strategies and services.

The County provides adequate and appropriate response to crime including prompt investigation, arrest, prosecution, and incarceration when necessary.

The County is well trained and ready to respond to fires and natural disasters, or to domestic terrorist threats.

Criminal justice and emergency service agencies meet the highest standards of quality in their operations and inspire public trust and confidence.