

**Mission Statement:**

The mission of the Probation Department is to promote the safety of the citizens of Placer County by conducting investigations for the court, enforcing court orders, ensuring victims’ rights, engaging in crime prevention partnerships, and facilitating the resocialization of offenders through the use of evidence-based supervision and best practices.

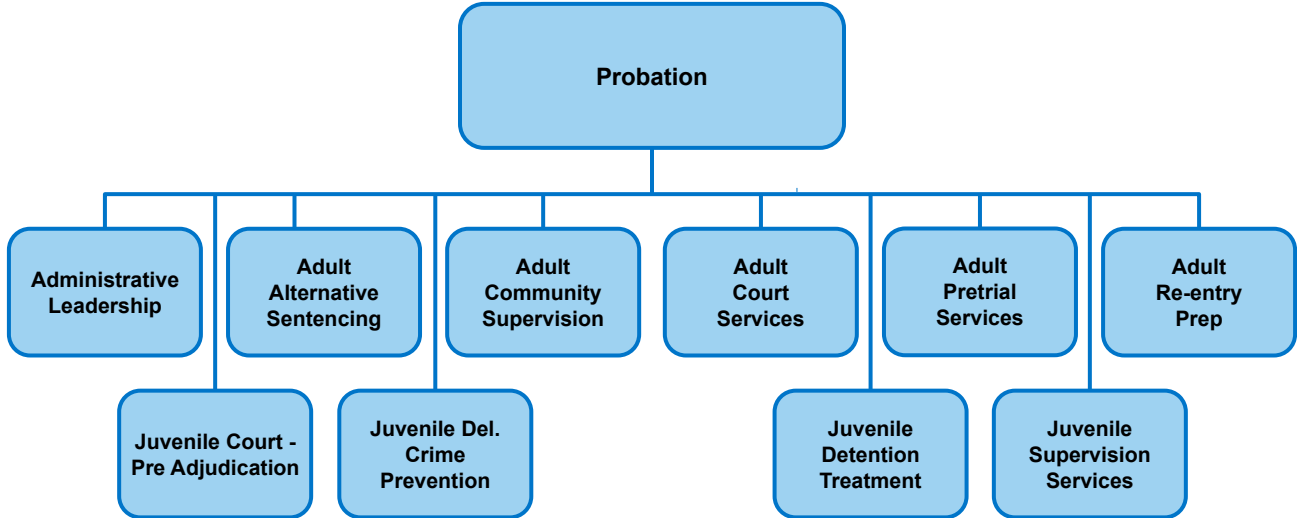
**Probation  
Cost Center Summary  
Fiscal Year 2022-23**

Cost Center	FY 2020-21 Actuals	FY 2021-22 Adopted Budget	FY 2022-23 Recommended Budget	FY 2022-23 Adopted Budget	YOY % Change
<b>Public Safety Fund</b>					
Probation	\$ 32,406,500	\$ 34,030,324	\$ 36,436,431	\$ 36,436,431	7.07%
<b>Funded Positions</b>					
Probation	149	149	149	149	0.00%
<b>Total Funded Positions</b>	<b>149</b>	<b>149</b>	<b>149</b>	<b>149</b>	<b>0.00%</b>
<b>Total Allocated Positions</b>	<b>149</b>	<b>149</b>	<b>149</b>	<b>149</b>	<b>0.00%</b>



# Probation

Marshall Hopper, Chief Probation Officer



## Probation – Cost Center 18001

### Purpose:

The Probation Department’s adult services are organized to provide a continuum of services for adults at all stages of the criminal justice system, from Court Services, Pre-Trial Services, Alternative Sentencing, Placer Re-Entry Program (PREP) and Community Supervision. Under the auspices of these five programs fall different services designed to assist the Court, redirect and supervise appropriate offenders in the community, hold offenders accountable, while redirecting behavior and providing safety to the community.

The Probation Department’s juvenile services are organized to provide a continuum of services for youth at all stages of the criminal justice system, from early Delinquency/ Crime Prevention, Court Services, Detention and Treatment Services, and Supervision Services. Under the auspices of these four programs fall different services designed to redirect behavior, provide accountability, promote family reunification and provide safety to the community.

### Major Budget Adjustments and Initiatives:

- Increase in State Aid - Other Programs revenue of \$1.0 million.
- Increase in State Aid - Public Safety Services - Proposition 172 of \$912,642.
- Increase in State Aid - Sales Tax Realignment for Public Safety of \$604,630.
- Increase in Contributions from the General Fund revenue of \$464,961.
- Increase in Buildings and Improvements of \$248,182 for Juvenile Detention Facilities improvements.
- Increase in Equipment of \$27,500 for portable radios.
- Increase in Contribution Auto Working Capital of \$42,462 for vehicle purchases.
- Increase in Professional and Special Services - General of \$810,602 for increased contract expenses.
- Increase in Project Costs of \$356,000 for training simulator and automated case systems expenses.
- Increase in Special Department Expense of \$175,000 for lockboxes and other vehicle equipment.

Program Title	Program Description	Program Cost
Adult Probation Court Services	The selection of an appropriate sentence is one of the most important decisions to be made in the criminal justice system. Court Services supports the goal of assisting judicial officers in making sentencing decisions and assists corrections and community corrections officials in supervising defendants. Court Services are State mandated and consist of Probation Officers preparing written reports for the Court by conducting a factual and thorough investigation into a defendant’s behavior, history, assets, impact on victims, mitigating and aggravating circumstances, assessing future risk and identifying needs to reduce reoffending behavior. Additionally, these reports provide judicial officers with reasoned sentencing options which conform to statutory and Case Law requirements. These reports include the terms and conditions of probation, if eligible, to promote accountability and community safety, and rehabilitation for the offender utilizing evidence-based programming. Through the Court process, Probation works to ensure victims’ rights and establish victim restitution. Beginning in January 2021, reports now include an additional, post-conviction, mandated report as a result of Prop 63. It is now critical that Probation complete Prop 63 time sensitive reports or risk a delay in sentencing of offenders and/or a negative impact on Court calendars.	\$ 3,099,539
Adult Probation Pretrial Services	Pretrial Services assists the Superior Court and provides community supervision to defendants pending legal proceedings. Pretrial Services performs multiple functions which are critical to the effective operation of our local criminal justice system, by assisting the court in making prompt, fair and effective release/detention decisions utilizing a risk assessment which is designed to be predictive of an individual’s failure to appear in court and potential for re-arrest while on pretrial status. Specific service modes include: Supervised Release and Home Confinement with Electronic Monitoring (GPS). Probation Officers enforce the terms and conditions of release that may include: making court appearances, abstaining from the use of alcohol and drugs, search and seizure, and stay away orders from victims.	\$ 2,902,337

Program Title	Program Description	Program Cost
Adult Probation Alternative Sentencing	Alternative Sentencing services create and maintain community-based alternatives to incarceration. Programs are designed to hold offenders accountable while promoting public safety in the community. Offenders complete their Court ordered sentence under direct Probation Officer supervision while maintaining family structure, retaining employment and housing, obtaining rehabilitative services, and continuing positive ties to the community. Specific service modes for post-conviction participants include: Electronic Monitoring (GPS), Work Release, Drug Court and Adult Placement. Probation Officers enforce program conditions that may include: abstaining from the use of drugs and alcohol, search and seizure, stay away orders from victims, monitoring and tracking community worksites, counseling programs, as well as monitoring offenders participating in residential drug treatment programs.	\$ 2,644,183
Placer Re-Entry Program	Probation and its partners provide evidence-based services through the innovative Placer Re-Entry Program (PREP) to offenders both in and out of custody in an effort to increase community safety. The Probation Department provides programming and services at multiple locations to 200 offenders in custody and 400 re-integrating back into the community. In 2020, Probation began collaborating with the California Department of Corrections and Rehabilitation expanding re-entry services provided in Placer County. In Fiscal Year 2022, Probation expects to further collaborate with SCOE to expand PREP services to clients in the North Lake Tahoe area. The Probation Department provides clients instruction in cognitive behavioral change, parenting and substance abuse education. Additionally, partnerships were established with other governmental and community-based organizations to provide GED preparation classes, vocational training, child support payment information, batterer's treatment programming and literacy education, in an effort to increase program participants' positive community and natural supports.	\$ 1,150,644
Adult Probation Community Supervision Services	Community Supervision provides structure and accountability for those offenders released back into our community after being granted formal probation or released under Parole Realignment (Post Release Community Supervision/Mandatory Supervision). Probation Officers promote public safety by supervising offenders in the community and ensure compliance with the terms and conditions of release. Officers also complete risk and needs assessments and develop collaborative case plans based on these assessments. Officers use evidence-based supervision and treatment practices to include linking offenders to community-based organizations and integrated service partners, providing Re-Entry Programing, vocational training and wraparound supervision and support to reduce recidivism and incarceration. Specific service modes for offenders under community supervision include: risk based offender supervision, DUI, Domestic Violence, Transient and Sex Offender caseloads. Offenders identified to pose the greatest risk to public safety are placed on a specialized joint task force caseload (Special Investigations Unit) comprised of multiple local law enforcement agencies. Additionally, our officers work collaboratively with Federal, State and local law enforcement agencies conducting operations to suppress gang, narcotic, DUI, violent and sex offender criminal conduct. They also track down and arrest absconded offenders, holding them accountable, bringing them back before the justice system. Probation Officers enforce court orders through office contacts, random unannounced home visits, drug and alcohol testing, tracking and monitoring, evidence based programming, DUI terms, Sex Offender terms, Elder Abuse terms, Domestic Violence terms, weapon prohibitions, stay away orders for victims, and the collection of victim restitution. Grant funding from Proposition 47 has allowed for the creation of an integrated multi-disciplinary team to provide Wraparound supervision and support for moderate to high risk clients experiencing mental health and/or substance abuse issues.	\$ 7,310,374
Juvenile Probation Delinquency / Crime Prevention Services	Delinquency/Crime Prevention Services include diversion services that target youth who are beyond parental control or are otherwise at risk of delinquency. Diversion Programs include: Citation and Traffic Hearings; Evidence Based Programs; the Placer County Sheriff's Activities League; School Attendance Mediation; Informal Probation to ensure victim restitution or Community Service is completed; and the Crisis Resolution Center. Additionally, the Juvenile Division provides access to structured community resources that assist youth and family members to build and utilize their own family resources and better equip them to become independent of the Juvenile Justice or Child Welfare Systems.	\$ 1,467,292
Juvenile Probation Court / Pre-Adjudication Services	Court Services are State mandated and consist of Probation Officers preparing written reports with information on a youth's family and educational background, any prior probation history, previous arrest history and other relevant information. These investigations and reports assist the Superior Court Judges in making informed dispositional decisions. This report includes the Probation Officers' dispositional recommendations, including the terms and conditions of probation, to provide rehabilitation for the youth utilizing evidence-based programming, and accountability to insure community safety. Through the Court process, Probation works to ensure victim rights and establish victim restitution. The Probation Officers also complete the evidence-based risk and needs assessment, designed to create and implement case plans focused on addressing the youth's identified behavioral indicators in addition to social and educational needs. Alternative disposition pre-adjudication supervision services allow the youth to be placed on any of several different programs in lieu of, or in addition to, confinement. These options include: home supervision, and electronic (GPS and/or alcohol) monitoring. Alternatives to confinement may be employed while awaiting further Court hearings, or as a tool to hold youth accountable while encouraging the development needed to support success.	\$ 1,463,695

continued

Program Title	Program Description	Program Cost
Juvenile Probation Detention and Treatment Services	<p>The 78 bed Juvenile Detention Facility (JDF) is a State mandated 24-hour secure detention facility housing male and female youth for their safety and public safety, who are pending court, sentenced or awaiting placement. The facility also houses youth who have been charged as adults. Programming within the facility includes education, health, mental health, social awareness, and special programs. Programming is designed to enhance safety and security, while providing youth opportunities and direction to change their behavior in order to promote successful transition back into the community and reunification with their families. These programs are taught by contracted providers, volunteers and probation staff. Youth may be ordered to be placed out of their home by the Superior Court into a group home or boot camp for supervision, behavior modification and treatment. Probation Officers are mandated by Federal and State government regulation to have in person contact with these youth on a monthly basis. These costly, out of home placements are a last resort and often avoided by the array of interventions employed by the Probation Department and partner agencies.</p>	\$ 7,416,489
Juvenile Probation Supervision Services	<p>Probation Officers assigned to Supervision Services monitor youth placed on probation supervision in the community. Youth who have been placed on probation supervision receive a risk and needs assessment to determine the type and level of service needed and are then supervised based on their individualized case plan. Probation Officers promote public safety by supervising youth in the community and ensuring compliance with the terms and conditions of probation which may include: enforcing curfews, school attendance, substance abuse counseling, drug and alcohol testing, gang conditions, stay away orders for victims, and the collection of victim restitution. Officers use evidence-based supervision and treatment practices, including safety and behavioral plans, to improve the likelihood of successful transition of youth back into our communities. Supervision Services maintain risk-based supervision caseloads including: Wraparound Services and Juvenile Drug Court in lieu of out of home placement.</p>	\$ 820,736
Administrative Leadership	<p>The Placer County Probation Department has staff located in six County facilities, as well as in the offices of four local law enforcement agencies. Administrative Leadership captures the costs of Executive Leadership, as well as operating costs not easily attributed to any single program as listed above. Executive Leadership includes our Chief Probation Officer and two Assistant Chief Probation Officers (one responsible for adult operations and the other for juvenile operations). Our Executive Leadership has final responsibility for all members of our Department and their actions. Our Executive Leadership promote the safety of the citizens of Placer County by ensuring our staff facilitate the resocialization of offenders through the use of evidence-based supervision and best practices. In addition to Executive Leadership, the costs of fiscal support (budgeting and fiscal monitoring, grants management, accounts payable, receivables and payroll), information technology support (including desktop support, database management and outside agency systems coordination), data research and validation (used to provide metrics associated with specific programs and their effectiveness), and clerical support. Building costs, including lease costs, utilities and associated expenses for facilities housing multiple programs are included within this program.</p>	\$ 8,161,142

**County of Placer**  
**Cost Center Budget Detail**  
**Governmental Funds**  
**Fiscal Year 2022-23**

**Fund: Public Safety Fund**  
**Cost Center: CC18001 Probation**

Ledger Account	2020-21 Actuals	2021-22 Adopted Budget	2022-23 Recommended Budget	2022-23 Adopted Budget
1	2	3	4	5
<b>Revenue</b>				
Other Court Fines	86,004	-	-	-
Forfeitures and Penalties	-	5,000	-	-
Investment Income	77	-	-	-
Federal Aid - Other Programs	90,558	610,000	610,000	610,000
State Aid - Other Programs	476,717	3,985,808	5,002,340	5,002,340
State Aid - Public Safety Services-Proposition 172	6,769,182	6,746,722	7,659,364	7,659,364
State Aid - Sales Tax Realignment for Public Safety	5,146,345	2,600,914	3,205,544	3,205,544
State Aid - Supplemental Law Enforcement	1,232,669	-	-	-
Law Enforcement Services	90,553	-	-	-
Institutional Care and Services	426,305	-	-	-
Other Fees and Charges	14,364	-	-	-
Insurance - Other	4,648	10,000	10,000	10,000
Miscellaneous	1,042	10,000	10,000	10,000
Contributions from General Fund	19,940,485	20,061,874	20,526,835	20,526,835
Operating Transfers In	1,259	-	-	-
<b>Total Revenue</b>	<b>\$ 34,280,207</b>	<b>\$ 34,030,318</b>	<b>\$ 37,024,083</b>	<b>\$ 37,024,083</b>
<b>Expenditures / Appropriations</b>				
Salaries and Wages	12,485,679	13,020,834	12,936,245	12,936,245
Salary Savings	-	(972,976)	(959,490)	(959,490)
Employee Paid Sick Leave	10,431	22,100	30,000	30,000
Extra Help	-	250,000	250,000	250,000
Overtime and Call Back	420,265	433,026	433,000	433,000
Sick Leave Payoff	149,268	15,000	15,000	15,000
Cafeteria Plans (Non-PERS)	557,525	621,913	616,094	616,094
Uniform Allowance	128,248	136,515	228,014	228,014
Taxable Meal Reimbursements	-	3,000	3,000	3,000
Retirement	5,245,965	6,372,518	6,434,505	6,434,505
Payroll Tax	994,896	990,443	985,126	985,126
Other Postemployment Benefits (OPEB)	913,486	639,210	456,982	456,982
401 (k) Employer Match	7,198	7,501	11,450	11,450
Employee Group Insurance	2,319,720	2,400,745	2,547,432	2,547,432
Workers Comp Insurance	340,724	302,887	408,060	408,060
Comp for Absence - Illness	10,189	-	-	-
Pesticides	52	-	-	-
Clothing and Personal	8,886	12,000	10,000	10,000
Communication Services Expense	180,959	278,360	305,000	305,000
Food	110,534	206,901	157,288	157,288
Janitorial Supplies	7,042	8,000	8,000	8,000
Refuse Disposal	37	-	-	-
Insurance	112,355	119,669	146,295	146,295
Witness Fees	613	-	-	-
Parts	12,764	3,000	3,000	3,000

continued

Ledger Account	2020-21	2021-22	2022-23	2022-23
	Actuals	Adopted Budget	Recommended Budget	Adopted Budget
1	2	3	4	5
Maintenance	304,230	180,000	-	-
Maintenance - Building	619,263	735,490	886,366	886,366
Fuels & Lubricants	6,584	5,500	19,500	19,500
Laboratory Supplies	3,696	-	-	-
Drug & Alcohol Testing	69,823	60,000	83,000	83,000
Professional / Membership Dues	14,256	16,000	20,000	20,000
Warranties	2,883	-	-	-
Misc Expense	452	5,000	-	-
School/Other Agency Expenditures	400	6,000	-	-
Printing	59,301	65,983	51,470	51,470
Other Supplies	70,921	66,134	75,560	75,560
Postage	21,089	37,524	16,620	16,620
Procurement Card Purchase / Clearing Account	162	-	-	-
Professional and Special Services - General	1,692,281	3,205,198	4,015,800	4,015,800
Professional and Special Services - County	150,720	-	12,960	12,960
Professional and Special Services - Information Technology	1,443,517	1,373,059	1,343,050	1,343,050
Professional and Special Services - Health	25,000	-	-	-
Rents and Leases - Buildings & Improvements	53,076	67,500	58,000	58,000
Small Tools & Instruments	2,253	-	-	-
Employee Benefits Systems	154,169	186,146	194,845	194,845
PC Acquisition	11,956	4,000	17,000	17,000
Small Equipment	164,082	-	-	-
Special Department Expense	18,194	45,000	220,000	220,000
Law Enforcement Special Expenses	308,583	10,000	-	-
Safety Clothing - Other Agency	-	5,000	-	-
Project Costs	-	30,000	386,000	386,000
Training / Education	59,837	-	-	-
Transportation and Travel	366,174	468,374	626,690	626,690
Utilities	303,847	261,528	256,265	256,265
Operating Materials	1,184	-	-	-
Support and Care of Persons	890,975	750,000	800,000	800,000
Transfer Out A-87 Costs	1,455,456	1,355,766	1,734,052	1,734,052
Buildings & Improvements	-	30,000	278,182	278,182
Equipment	45,747	15,000	42,500	42,500
Operating Transfer Out	10,162	-	-	-
Contrib Auto Working Capital	-	37,538	80,000	80,000
Intrafund Transfers / Services Out	988,281	1,102,889	1,165,268	1,165,268
Intrafund Transfers / Services In (Contra Expense)	(928,889)	(964,951)	(971,698)	(971,698)
<b>Total Expenditures / Appropriations</b>	<b>\$ 32,406,500</b>	<b>\$ 34,030,324</b>	<b>\$ 36,436,431</b>	<b>\$ 36,436,431</b>
<b>Total</b>	<b>\$ 1,873,707</b>	<b>\$ (6)</b>	<b>\$ 587,652</b>	<b>\$ 587,652</b>