

# CORNER RECORD

Document Number 20080089

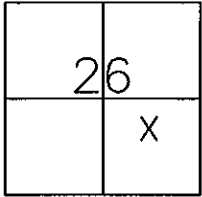
City of \_\_\_\_\_

County of PLACER, California

Brief Legal Description CENTERLINE OF OLANA DRIVE, MARTIS CAMP UNIT No. 3 per BOOK BB, PG. 68, SEE SHEET 11 OF 17.

### CORNER TYPE

### COORDINATES(Optional)



S26  
T17N  
R16E

Government Corner  Control   
 Meander  Property   
 Rancho  Other

Date of Survey NOV. 3, 2008

N. \_\_\_\_\_  
 E. \_\_\_\_\_  
 Zone \_\_\_\_\_ NAD27  NAD83   
 NAD83 Epoch \_\_\_\_\_  
 Elev. \_\_\_\_\_  
 Vert.Datu: NGVD29  NADV88   
 Meas.Units: Metric  Imperial

Corner - Left as found  Found and tagged  Established  Reestablished  Rebuilt

Identification and type of corner found: Evidence used to identify or procedure used to establish or reestablish the corner:

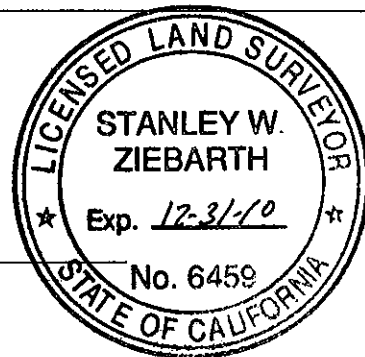
REESTABLISHED CENTERLINE USING FOUND MONUMENTS AND RECORD INFORMATION PER BB MAPS 68, AS SHOWN ON REVERSE.

A description of the physical condition of the monument as found and as set or reset: SET A 5/8" REBAR AND PLASTIC CAP "LS 6459", FOUND ALL OTHER MONUMENTS AS SHOWN ON REVERSE IN GOOD CONDITION.

### SURVEYOR'S STATEMENT

This Corner Record was prepared by me or under my direction in conformance with the Land Surveyor's Act on NOV. 3, 2008.

Signed Stanley W Ziebarth P.L.S. or R.C.E. No. 6459



### COUNTY SURVEYOR'S STATEMENT

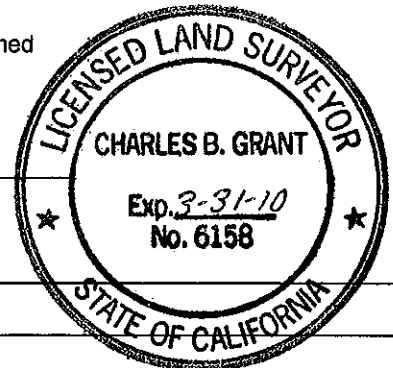
This Corner Record was received \_\_\_\_\_ and examined \_\_\_\_\_

and filed APRIL 14, 2009

Signed Charles B. Grant P.L.S. or R.C.E. No.: 6158  
 LICENSE EXPIRES 3-31-10

Title COUNTY SURVEYOR

County Surveyor's Comment \_\_\_\_\_



BOOK 13 CORNER RECORDS, PAGE 26

NOTE:  
 ALL BEARINGS AND DISTANCES SHOWN HEREON  
 ARE RECORD PER BB MAPS 68, DRPC. SEE SHEET  
 11 OF 17.



1"=70'

198

203

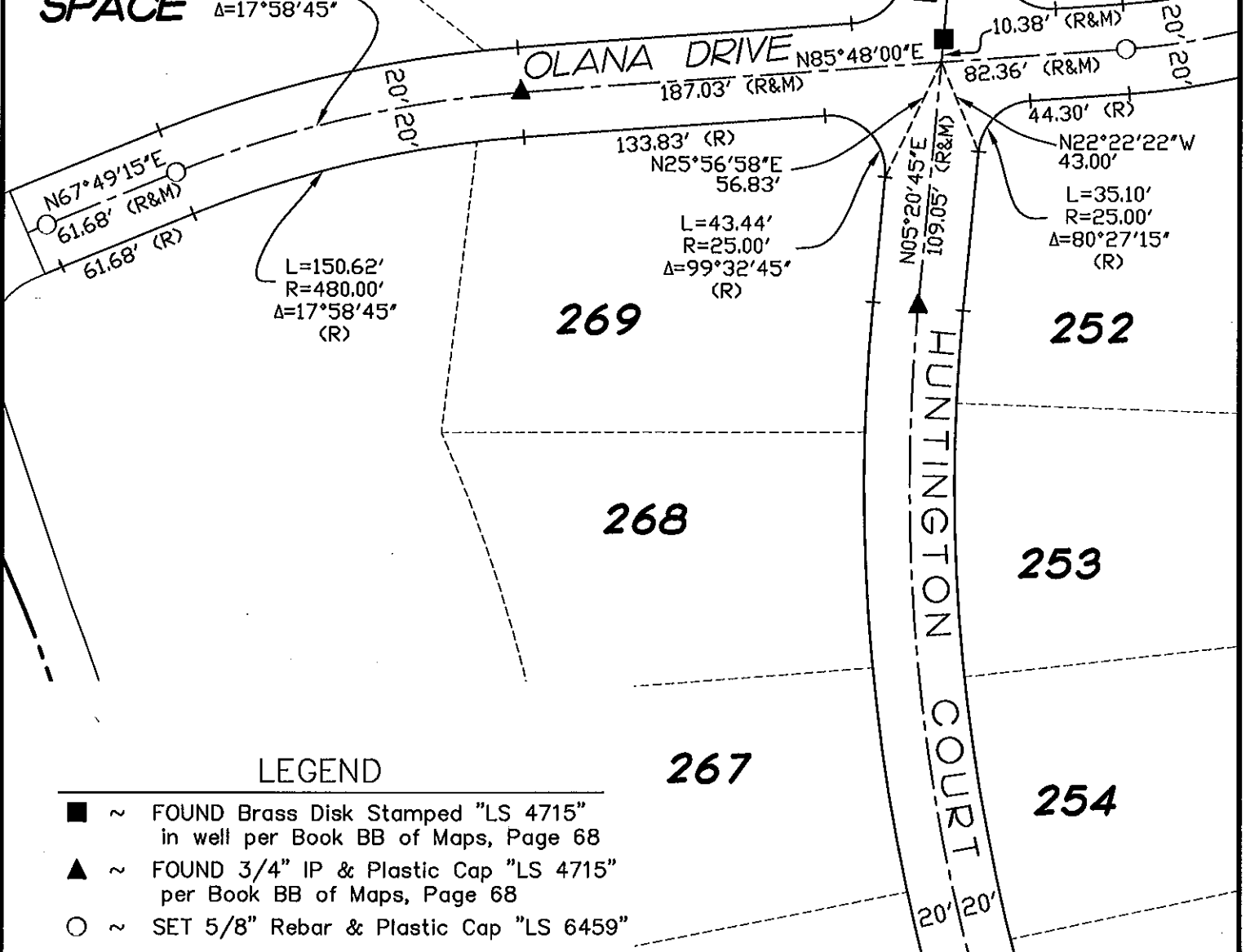
**LOT "TT"  
 OPEN  
 SPACE**

L=156.90'  
 R=500.00'  
 $\Delta=17^{\circ}58'45''$

**OLANA DRIVE**

**LONGWOOD COURT**

**HUNTINGTON COURT**



**LEGEND**

- ~ FOUND Brass Disk Stamped "LS 4715"  
 in well per Book BB of Maps, Page 68
- ▲ ~ FOUND 3/4" IP & Plastic Cap "LS 4715"  
 per Book BB of Maps, Page 68
- ~ SET 5/8" Rebar & Plastic Cap "LS 6459"

BOOK 13 CORNER RECORDS, PAGE 26