

CORNER RECORD

Document Number 20090004

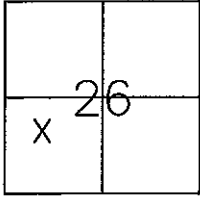
City of _____

County of PLACER, California

Brief Legal Description LOTS 105-106 & 107-108, MARTIS CAMP UNIT No. 1
PER BOOK BB, PG. 17, SEE SHEET 43 OF 56.

CORNER TYPE

COORDINATES(Optional)



S26 Government Corner Control
 T17N Meander Property
 R16E Rancho Other

N. _____
 E. _____
 Zone _____ NAD27 NAD83
 NAD83 Epoch _____
 Elev. _____
 Vert.Datu: NGVD29 NADV88
 Meas.Units: Metric Imperial

Date of Survey DEC. 1, 2008

APN: 106-070-013, 014 & 106-060-021, 022

Corner - Left as found Found and tagged Established Reestablished Rebuilt

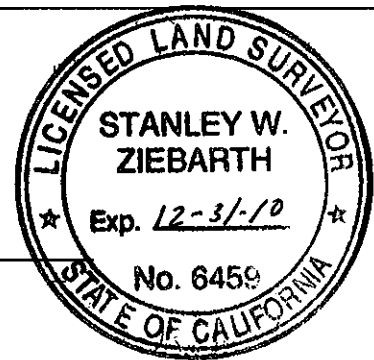
Identification and type of corner found: Evidence used to identify or procedure used to establish or reestablish the corner:
REESTABLISHED PROPERTY CORNERS USING FOUND MONUMENTS AND RECORD
INFORMATION PER BB MAPS 17, AS SHOWN ON REVERSE.

A description of the physical condition of the monument as found and as set or reset: _____
SET A 5/8" REBAR AND PLASTIC CAP "LS 6459".
FOUND ALL OTHER MONUMENTS AS SHOWN ON REVERSE IN GOOD CONDITION.

SURVEYOR'S STATEMENT

This Corner Record was prepared by me or under my direction in conformance with
the Land Surveyor's Act on DEC. 2, 2008

Signed Stanley W. Ziebart P.L.S. or ~~R.C.E.~~ No. 6459



COUNTY SURVEYOR'S STATEMENT

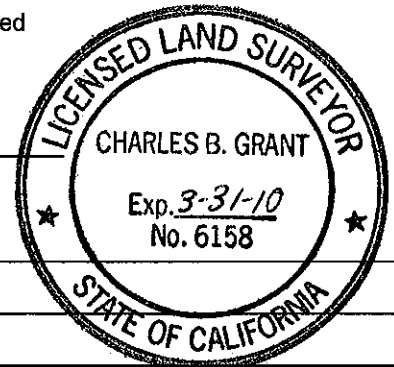
This Corner Record was received _____ and examined

and filed APRIL 14, 2009

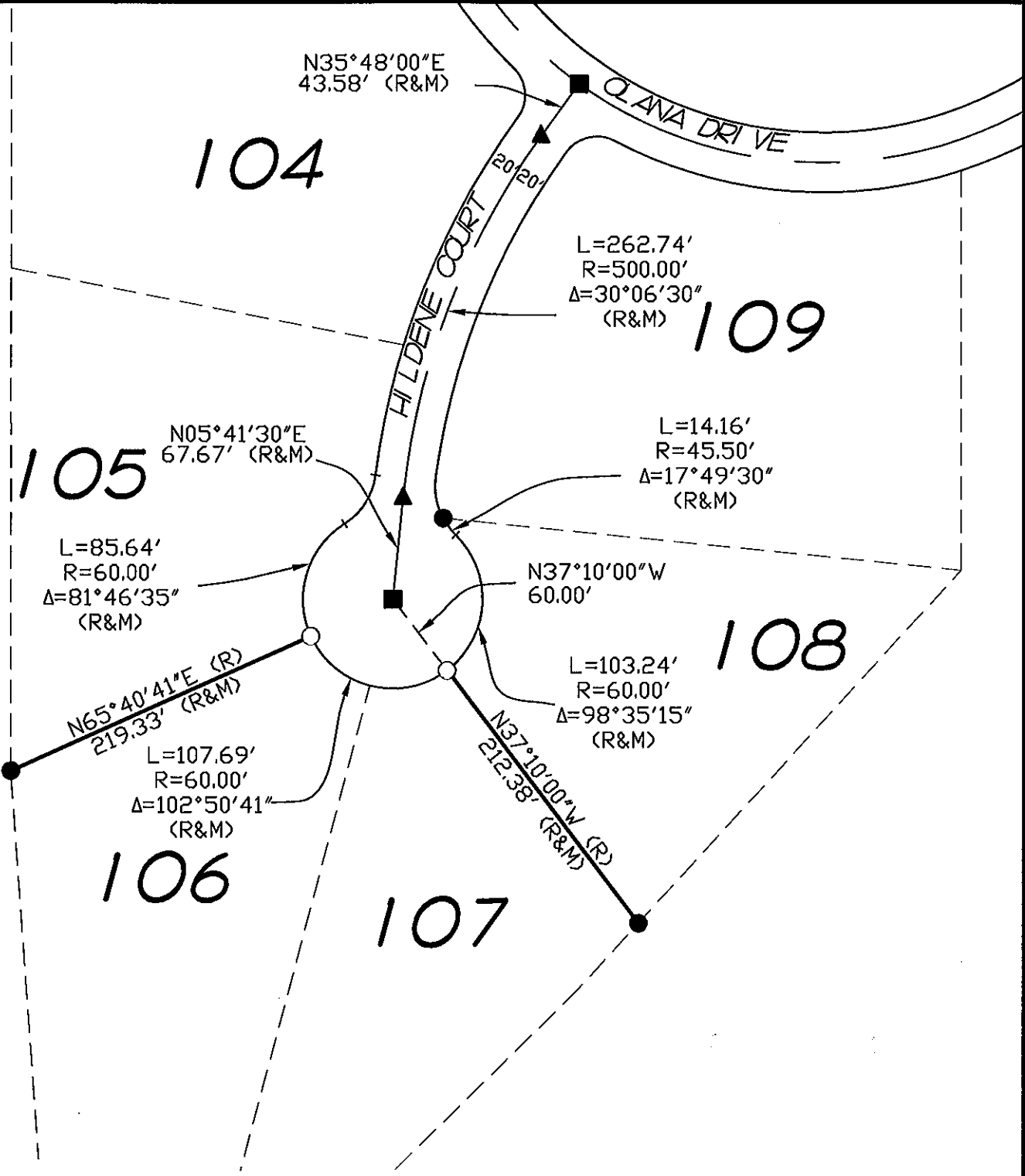
Signed Charles B. Grant P.L.S. or R.C.E. No.: 6158
LICENSE EXPIRES 3-31-10

Title COUNTY SURVEYOR

County Surveyor's Comment _____



BOOK 13 CORNER RECORDS, PAGE 30



LEGEND

- ~ FOUND 1" IP & Plastic Cap "LS 4715" in well per Book BB of Maps, Page 17
- ~ FOUND Rebar & Plastic Cap "LS 4715" per Book BB of Maps, Page 17
- ▲ ~ FOUND 3/4" IP & Plastic Cap "LS 4715" per Book BB of Maps, Page 17
- ~ SET 5/8" Rebar & Plastic Cap "LS 6459"

NOTE:
ALL BEARINGS AND DISTANCES SHOWN
HEREON ARE RECORD PER BB MAPS 17,
DRPC. SEE SHEET 43 OF 56.