

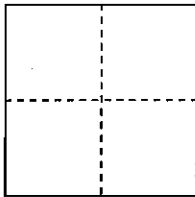
CORNER RECORD

COUNTY OF PLACER, CALIFORNIA

City of ROSEVILLE

Document Number 20090015

Brief Legal Description LOT No. 4 SLIM MEADOWS SUB. BOOK "P" OF MAPS PG. 44 P.C.R.



S. 34

CORNER TYPE

COORDINATES

T. 11. N.

Government Corner

Control

N. _____

R. 6. E.

Meander

Property

E. _____

Rancho

Other

Zone _____

Datum _____

Date of Survey JANUARY 8, 2009

Elev. _____

Corner---

Left as found

Found and tagged

Established

Reestablished

Rebuilt

Identification and type of corner found: Evidence used to identify or procedure used to establish or reestablish corner: LOT PROPERTY CORNERS GONE. FD. ST. MON'S. ON CENTERLINE OF CARPENTER WAY AT INTERSECTIONS OF JUNCTION BLVD. AND AT RICE LN. FD. CHISLED SLASH AT BACK SD. WALK ON ADJ. LOT CORNERS (R.P.'S) USED CENTERLINE OF CARPENTER WAY AS BASIS OF BRGS. SET REAR LOT CORNERS AND REFERENCE MON'S. TO FRONT LOT CORNERS PER SKETCH.

A description of the physical condition of the monument as found and as set or reset: FD. STD. ST. MON'S. AT INTERSECTIONS OF CENTERLINES ON CARPENTER WAY AND JUNCTION BLVD. & RICE LN. FD. CHISLED SLASH AT BACK OF WALK ON ADJ. LOTS. SET 1" BRASS DISK. STAMPED CADIENTE L.S. 4407 REF. MON. TO FRONT COR'S. SET 5/8" RE-BAR AT N.E. COR. SET NAIL SHINNER TOP OF 4"x4" FENCE POST S.E. COR. PER SKETCH.

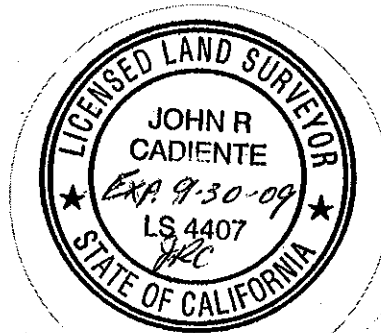
SURVEYOR'S STATEMENT

This Corner Record was prepared by me or under my direction in conformance with the Professional Land Surveyors' Act

on JANUARY 28, 2009

Signed John R. Cadiente

L.S. or R.C.E. Number 4407 Expiration Date 9/30/2009



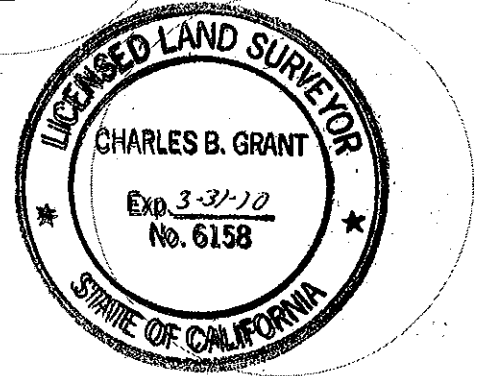
COUNTY SURVEYOR'S STATEMENT

This Corner Record was received _____ 20__

and examined and filed MAY 28 2009

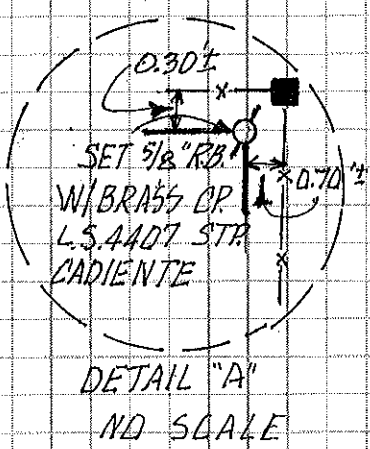
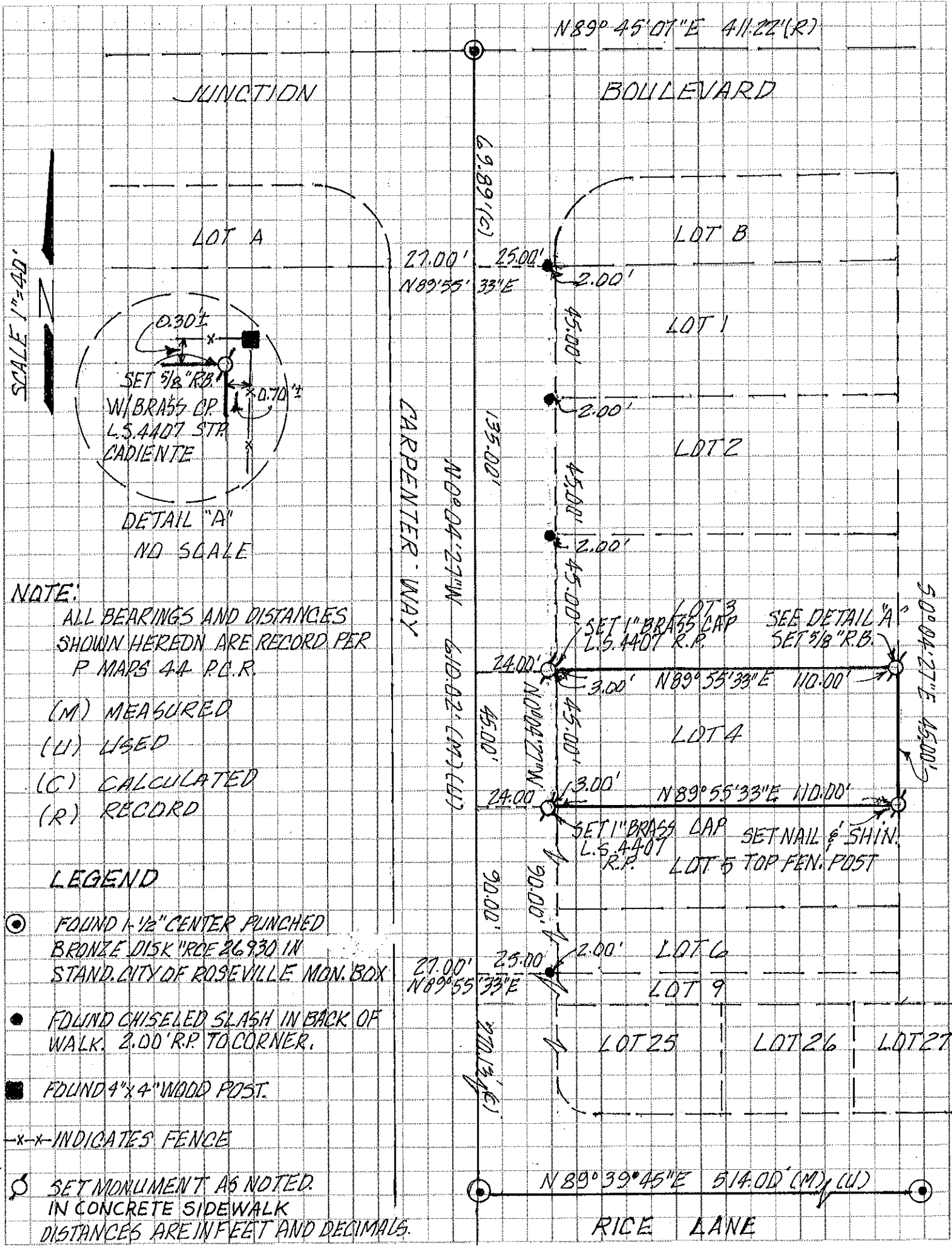
Signed Charles B. Grant Title COUNTY SURVEYOR

L.S. or R.C.E. Number 6158 Expiration Date 3-31-10



County Surveyor's Comment _____

BOOK 13 CORNER RECORDS PAGE 33



NOTE:

ALL BEARINGS AND DISTANCES SHOWN HEREON ARE RECORD PER P MAPS 44 P.C.R.

- (M) MEASURED
- (U) USED
- (C) CALCULATED
- (R) RECORD

LEGEND

- FOUND 1-1/2" CENTER PUNCHED BRONZE DISK "RCE 26930 IN STAND. CITY OF ROSEVILLE MON. BOX
- FOUND CHISELED SLASH IN BACK OF WALK. 2.00' R.P. TO CORNER.
- FOUND 4"x4" WOOD POST.
- x-x- INDICATES FENCE
- ⊙ SET MONUMENT AS NOTED. IN CONCRETE SIDEWALK. DISTANCES ARE IN FEET AND DECIMALS.