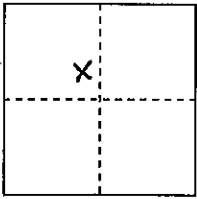


CORNER RECORD

COUNTY OF PLACER, CALIFORNIA

City of _____ Document Number 2010 0007

Brief Legal Description Block 11, Tahoe Pines, C-12, ORPC



S. 36

CORNER TYPE

COORDINATES

(Optional)

T. 15N

Government Corner

Control

N. _____

R. 16E

Meander

Property

E. _____

Rancho

Other

Zone _____ Datum _____

Date of Survey 11/11/09

Elev. _____

Corner--- Left as found Found and tagged Established Reestablished Rebuilt

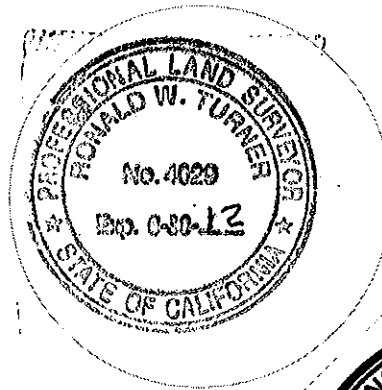
Identification and type of corner found: Evidence used to identify or procedure used to establish or reestablish corner:

See pg. 2

A description of the physical condition of the monument as found and as set or reset: See pg. 2

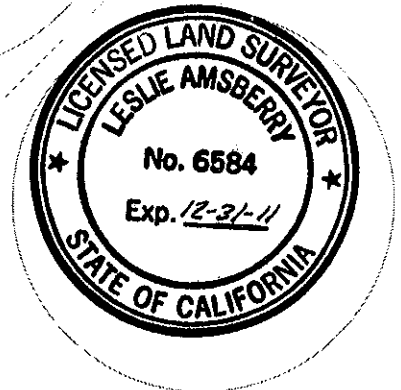
SURVEYOR'S STATEMENT

This Corner Record was prepared by me or under my direction in conformance with the Professional Land Surveyors' Act on Aug. 12, 2010.
Signed Ronald W. Turner
L.S. or R.C.E. Number 4029 Expiration Date 6-30-12



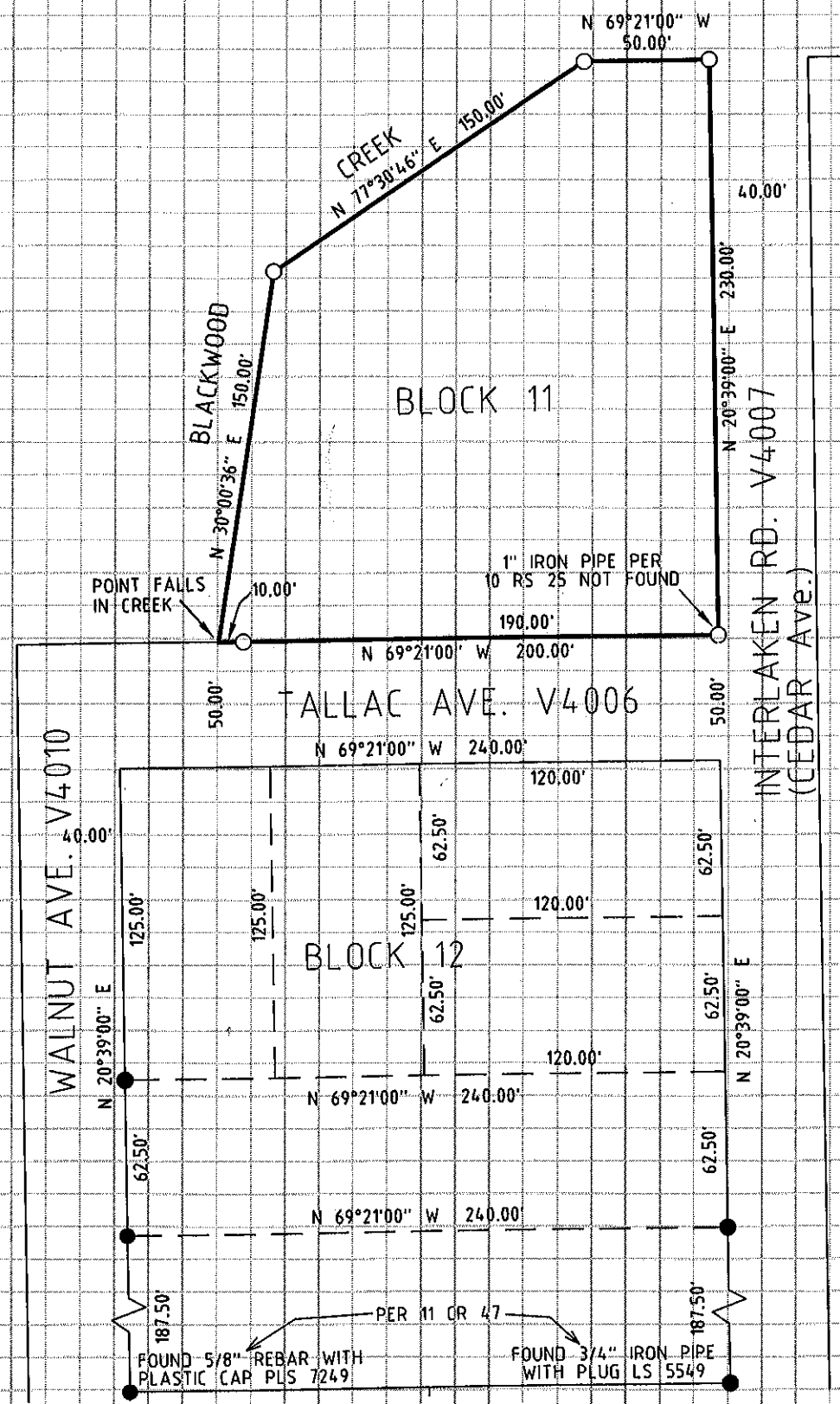
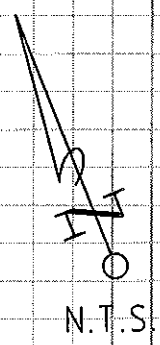
COUNTY SURVEYOR'S STATEMENT

This Corner Record was received _____ 20_____
and examined and filed OCTOBER 7 2010.
Signed Leslie Amsherry Title Deputy County Surveyor
L.S. or R.C.E. Number 6584 Expiration Date 12-31-11



County Surveyor's Comment THE FILING OF THIS CORNER RECORD DOES NOT CONSTITUTE AGREEMENT WITH THE LOCATIONS SHOWN OR RELINQUISHMENT OF ANY RIGHTS OF WAY FOR WALNUT AVE., TALLAC AVE., AND INTERLAKEN DR. (FORMERLY CEDAR AVE.) AS DEDICATED ON THE MAP ENTITLED "TAHOE PINES," FILED IN BOOK C.O.F.M.A.S., AT PAGE 12, PLACER COUNTY OFFICIAL RECORDS

BOOK 14 CORNER RECORDS PAGE 01



FOUND 5/8" REBAR WITH 2" ALUMINUM CAP
 LS 5886 "TAHOE BASIN LAND SURVEYING", NO RECORD
 SET 3/4" IP W/PLUG PLS 4029
 OR SET AS NOTED
 NOTHING FOUND OR SET

NOTE:
 ALL BEARINGS AND DISTANCES SHOWN HEREON
 ARE RECORD PER C/MAPS/12, O.R.P.C.