

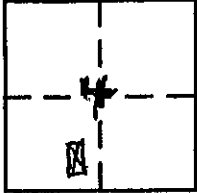
CORNER RECORD

COUNTY OF PLACER, CALIFORNIA

City of GRANITE BAY, CA

Document Number 20100045

Brief Legal Description Lot 4, P/Maps/4



SEC 4
TION
RTE

CORNER TYPE

Government Corner Control
Meander Property
Rancho Other
Date of Survey _____

COORDINATES
(Optional)

N. _____
E. _____
Zone _____ Datum _____
Elev. _____

Corner — Left as found Found and tagged Established Reestablished Rebuilt

Identification and type of corner found: Evidence used to identify or procedure used to establish or reestablish corner:

FOUND 3/4" IRON PIN TAGGED LS 4751 AT NW COR LOT 4.

FOUND 2" BRASS CAP IN MONUMENT BOX,

USING COMPUTED LINE BETWEEN THESE MONUMENTS SET

SW COR OF LOT 4. FOUND MONUMENTS RECOVERED IN RECORD POSITION

AND OF SAME CHARACTER AS DESCRIBED IN P/MAPS/4

A description of the physical condition of the monument as found and as set or reset:

MADE PUNCH MARK ON METAL PLATE ON TOP OF WATER BOX

SET 3/4" REBAR WITH PLASTIC CAP MARKED LS 3662 N 87° 16' 59" E 2.00' FOR

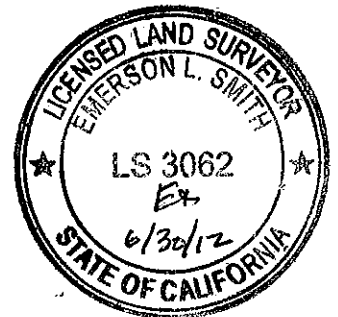
REFERENCE POINT

SURVEYOR'S STATEMENT

This Corner Record was prepared by me or under my direction in conformance with the Land

Surveyors' Act on Sept 29, 2010.

Signed Emerson L. Smith L.S. or R.C.E. Number LS 3062

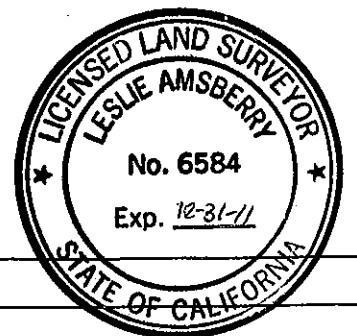


COUNTY SURVEYOR'S STATEMENT

This Corner Record was received _____ 20 _____ and examined

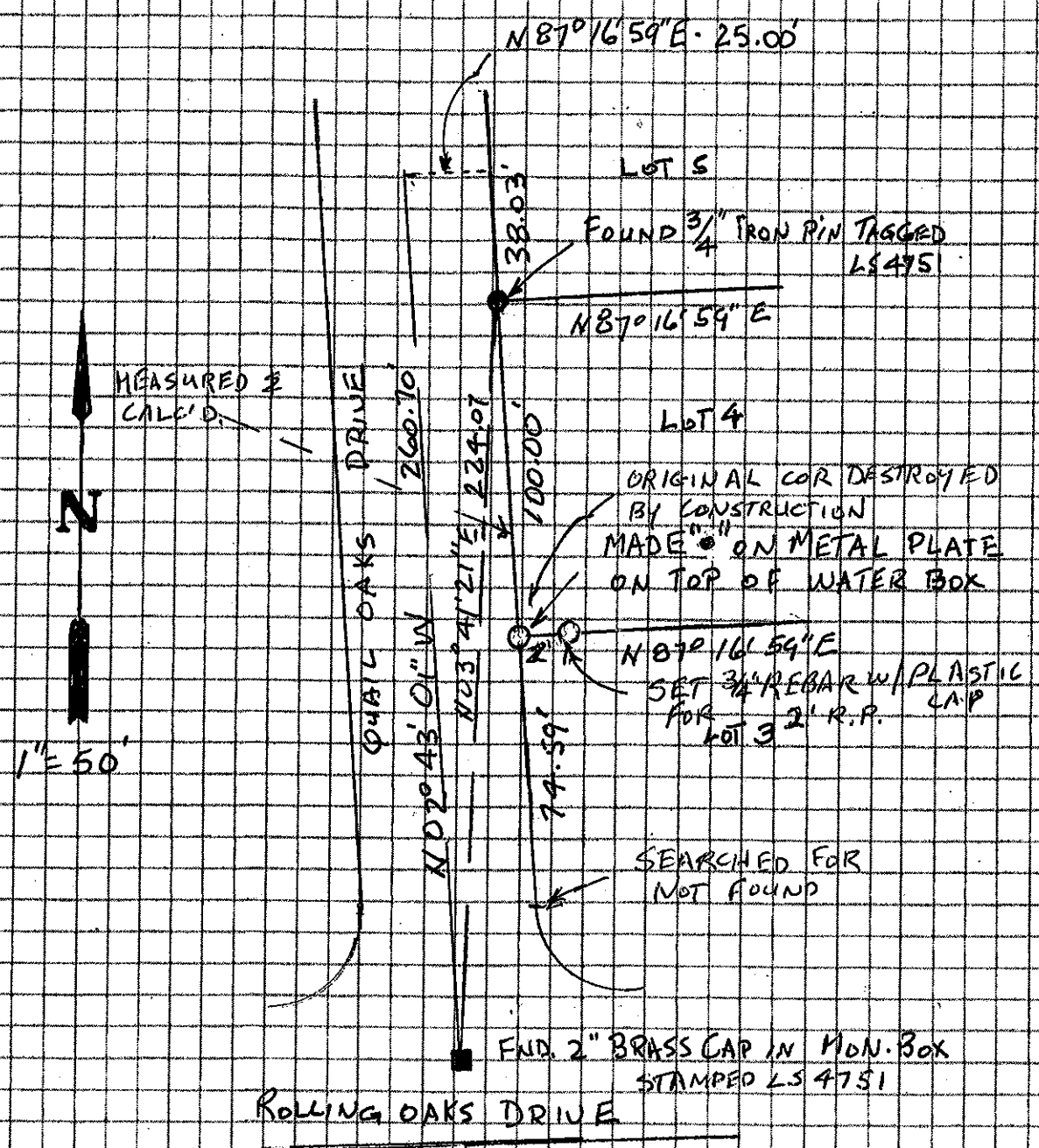
and filed NOVEMBER 5, 2010.

Signed Leslie Ansberry Title Deputy County Surveyor



County Surveyor's Comment _____

BOOK 14 CORNER RECORDS PAGE 03



QUAIL OAKS SUB. I TRACT 623
 PTN. SW 1/4 SEC 4, T10N. R 7E MDM