

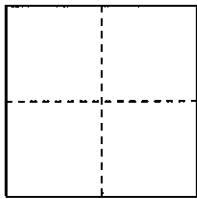
CORNER RECORD

COUNTY OF PLACER, CALIFORNIA

City of ROSEVILLE

Document Number 20100053

Brief Legal Description E B.C. E. ROSEVILLE PKWY, N. OF DOUGLAS BLVD PER 25 PM 64



S. 5

CORNER TYPE

COORDINATES (Optional)

T. 10 N.

Government Corner

Control

N. _____

R. 7 E

Meander

Property

E. _____

Rancho

Other

Zone _____ Datum _____

Date of Survey 08-20-10

Elev. _____

Corner--- Left as found Found and tagged Established Reestablished Rebuilt

Identification and type of corner found: Evidence used to identify or procedure used to establish or reestablish corner: ORIGINAL WELL MONUMENT PER 25 PM 64 WAS IDENTIFIED, NOT TIED OUT, AND INADVERTENTLY DESTROYED DURING CONSTRUCTION. RESET NEW MONUMENT AT RECORD POSITION BASED ON 2 REMAINING WELL MONUMENTS - ONE TO THE NORTH AND ONE TO THE SOUTH, BOTH PER 25 PM 64

A description of the physical condition of the monument as found and as set or reset: ORIGINAL WELL MONUMENT WAS DESTROYED BY PAVEMENT GRINDING MACHINE. NEW MONUMENT IS A 2" DIA. BRASS DISC SET IN CONCRETE IN MONUMENT WELL, PUNCHED AND STAMPED "LS 6376". ALSO SET 4 - 2.00' CONCRETE NAIL STRADDERS IN PAVEMENT.

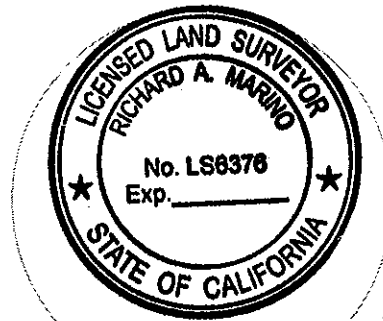
SURVEYOR'S STATEMENT

This Corner Record was prepared by me or under my direction in conformance with the Professional Land Surveyors' Act

on OCTOBER 1 2010

Signed Richard A. Marino

L.S. or R.C.E. Number 6376 Expiration Date 12-31-10



COUNTY SURVEYOR'S STATEMENT

This Corner Record was received _____ 20_____

and examined and filed November 29, 2010

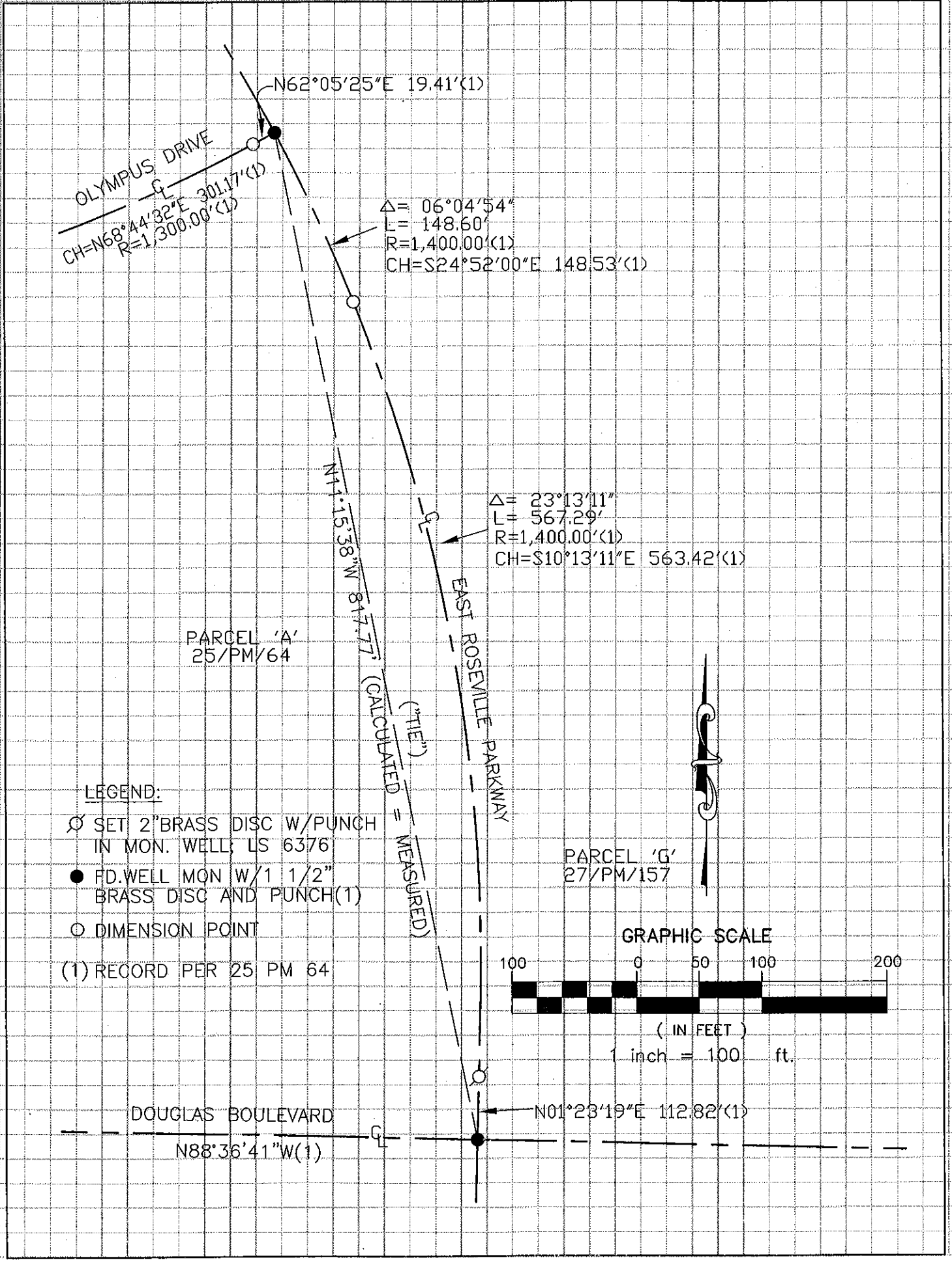
Signed Leslie Ambery Title Deputy

L.S. or R.C.E. Number 6584 Expiration Date 12-31-10



County Surveyor's Comment _____

BOOK 14 CORNER RECORDS PAGE 05



OLYMPUS DRIVE
 CH=N68°44'32"E 301.17'(1)
 R=1,300.00'(1)
 N62°05'25"E 19.41'(1)

Δ= 06°04'54"
 L= 148.60'
 R=1,400.00'(1)
 CH=S24°52'00"E 148.53'(1)

PARCEL 'A'
 25/PM/64

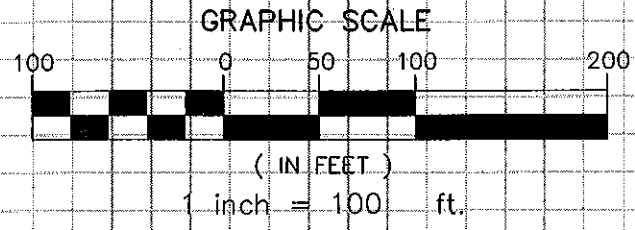
N41°15'38"W 817.77' (CALCULATED = MEASURED)
 ("TIE")

Δ= 23°13'11"
 L= 567.29'
 R=1,400.00'(1)
 CH=S10°13'11"E 563.42'(1)

EAST ROSEVILLE PARKWAY

PARCEL 'G'
 27/PM/157

- LEGEND:
- ⊗ SET 2" BRASS DISC W/PUNCH IN MON. WELL LS 6376
 - FD. WELL MON W/1 1/2" BRASS DISC AND PUNCH(1)
 - DIMENSION POINT
 - (1) RECORD PER 25 PM 64



DOUGLAS BOULEVARD
 N88°36'41"W(1)
 N01°23'19"E 112.82'(1)