

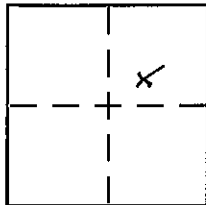
CORNER RECORD

Document Number 20100037

City of _____

County of PLACER, California

Brief Legal Description LOT 41, SERENE LAKES UNIT No.1 SUBDIVISION, I/MAPS/17 O.R.P.C.



CORNER TYPE

Government Corner Control

Meander Property

Rancho Other

Date of Survey 9-8-2010

COORDINATES (Optional)

N. _____

E. _____

Zone _____ NAD27 NAD83

NAD83 Epoch _____

Elev. _____

Vert. Datum: NGVD29 NAVD88

Meas. Units: Metric Imperial

Corner - Left as found Found and tagged Established Reestablished Rebuilt

Identification and type of corner found: Evidence used to identify or procedure used to establish or reestablish the corner:

USED RECORDED DIMENSIONS AND FOUND MONUMENTS PER I/MAPS/17 O.R.P.C. TO RE-ESTABLISH THE MISSING CORNER OF LOT 41, AS SHOWN ON ACCOMPANYING PLAT.

A description of the physical condition of the monument as found and as set or reset:

• SET 5/8" REBAR WITH YELLOW PLASTIC CAP LS-7429
• FOUND MONUMENT AS SHOWN ON PLAT

SURVEYOR'S STATEMENT

This Corner Record was prepared by me or under my direction in conformance with the Land Surveyor's Act on September 07, 2010.
 Signed Matthew S. Webb (P.L.S. or R.C.E. No. 7429)



COUNTY SURVEYOR'S STATEMENT

This Corner Record was received _____ and examined and filed December 1, 2010.
 Signed Leslie Amsherry (P.L.S. or R.C.E. No. 6584)
 Title Deputy



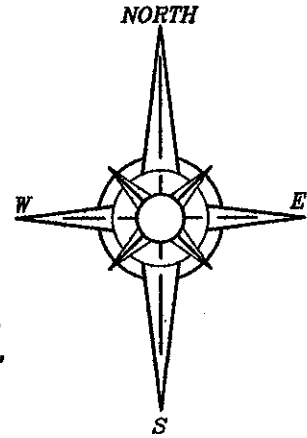
County Surveyor's Comment THE FILING OF THIS CORNER RECORD DOES NOT CONSTITUTE AGREEMENT WITH THE LOCATIONS SHOWN OR RELINQUISHMENT OF ANY RIGHT OF WAY FOR SERENE ROAD AS DEDICATED ON THE MAP ENTITLED "SERENE LAKES UNIT NO.1" FILED IN BOOK I OF MAPS, AT PAGE 17, ORPC.

BOOK 14 CORNER RECORDS, PAGE 07

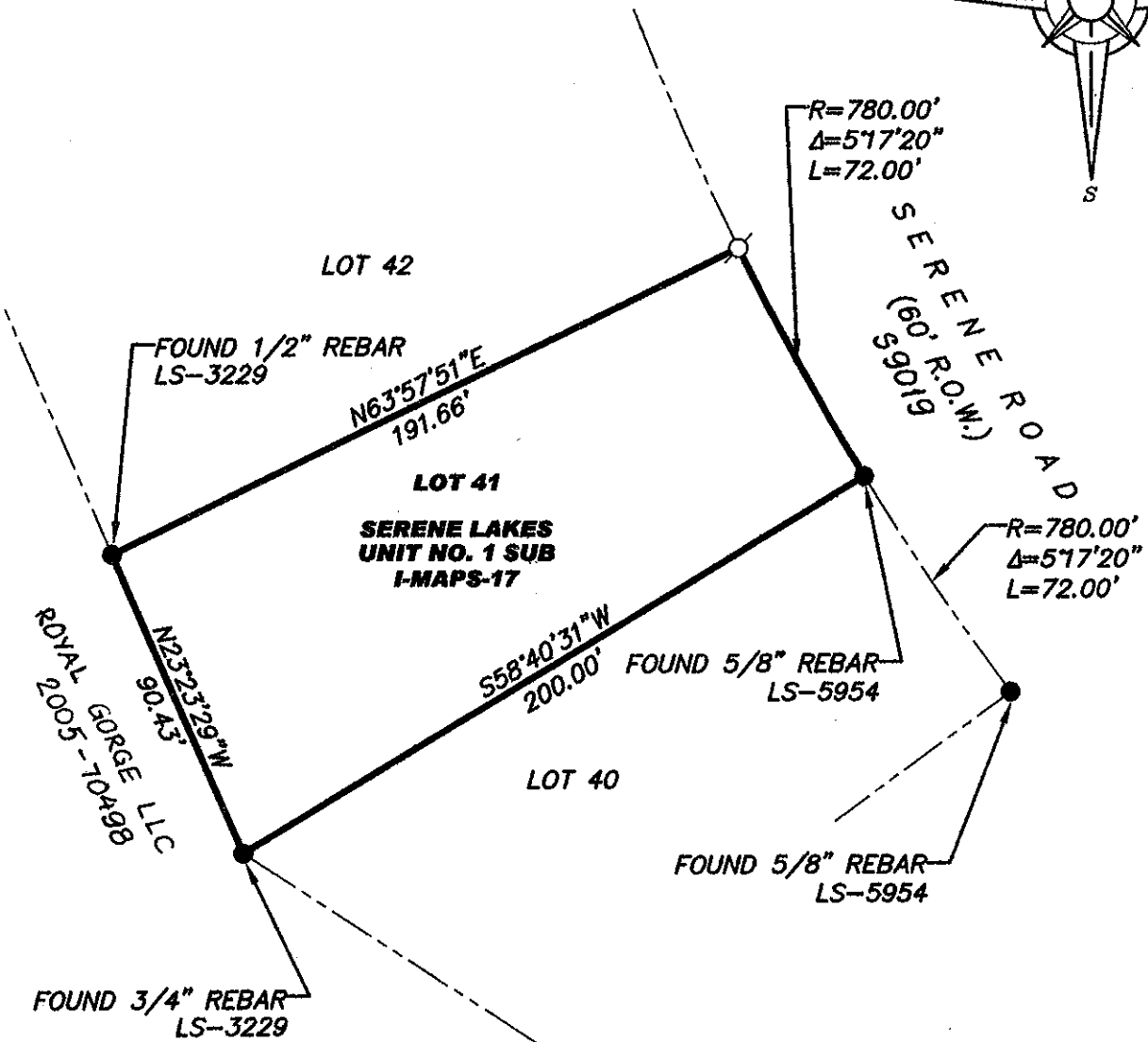
PLAT OF SURVEY

LOT 41, SERENE LAKES UNIT NO.1, AS FILED IN BOOK 1 OF MAPS AT PAGE 17, OFFICIAL RECORDS PLACER COUNTY, CALIFORNIA. A PORTION OF SECTION 34, TOWNSHIP 17 N., RANGE 14 E., M.D.B. & M.

SCALE 1" = 50' DATE OF SURVEY 8/25/2010



BOOK 14 CORNER RECORDS, PAGE 07



- FOUND MONUMENT AS SHOWN HEREON
- SET 5/8" REBAR WITH YELLOW PLASTIC CAP L.S. 7429

J/N 1851.00