

CORNER RECORD

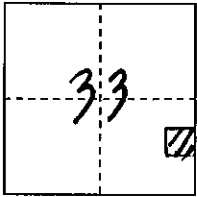
COUNTY OF PLACER, CALIFORNIA

City of \_\_\_\_\_

Document Number 20100058

Brief Legal Description 4-PM-4

PARCEL MAP No. 70361



S. 33

T. 11 N.

R. 7 E.

CORNER TYPE

- Government Corner
- Meander
- Rancho
- Date of Survey \_\_\_\_\_
- Control
- Property
- Other

COORDINATES

(Optional)

- N. \_\_\_\_\_
- E. \_\_\_\_\_
- Zone \_\_\_\_\_ Datum \_\_\_\_\_
- Elev. \_\_\_\_\_

Corner---- Left as found  Found and tagged  Established  Reestablished  Rebuilt

Identification and type of corner found: Evidence used to identify or procedure used to establish or reestablish corner:  
FOUND R+R SPIKE IN TRAVELED WAY OF BARTON RD. Per PARCEL MAP No. 70361, Book 4 of PARCEL MAPS, PAGE 4 O.R.P.C. FROM FOUND MONUMENT ESTABLISHED REFERENCE POINTS PRIOR TO ASPHALT OVERLAY

A description of the physical condition of the monument as found and as set or reset:  
FROM REFERENCE POINTS SET MAG-NAIL w/ 1/4" BRASS TAG STAMPED "PLACER CO SURVEYOR" CENTERED OVER FOUND MONUMENTS

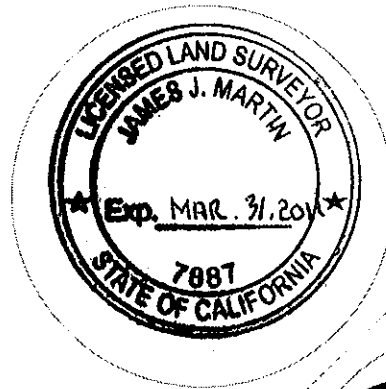
SURVEYOR'S STATEMENT

This Corner Record was prepared by me or under my direction in conformance with the Professional Land Surveyors' Act

on Nov. 24 2010

Signed [Signature]

L.S. or ~~R.C.E.~~ Number 7887 Expiration Date MAR. 31, 2011



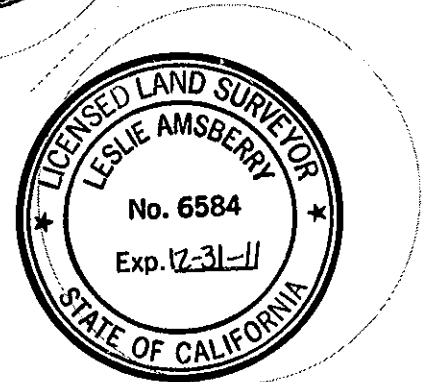
COUNTY SURVEYOR'S STATEMENT

This Corner Record was received \_\_\_\_\_ 20\_\_\_\_

and examined and filed DECEMBER 7 2010

Signed [Signature] Title DEPUTY

L.S. or R.C.E. Number 6584 Expiration Date 12-31-11



County Surveyor's Comment \_\_\_\_\_

\_\_\_\_\_  
\_\_\_\_\_

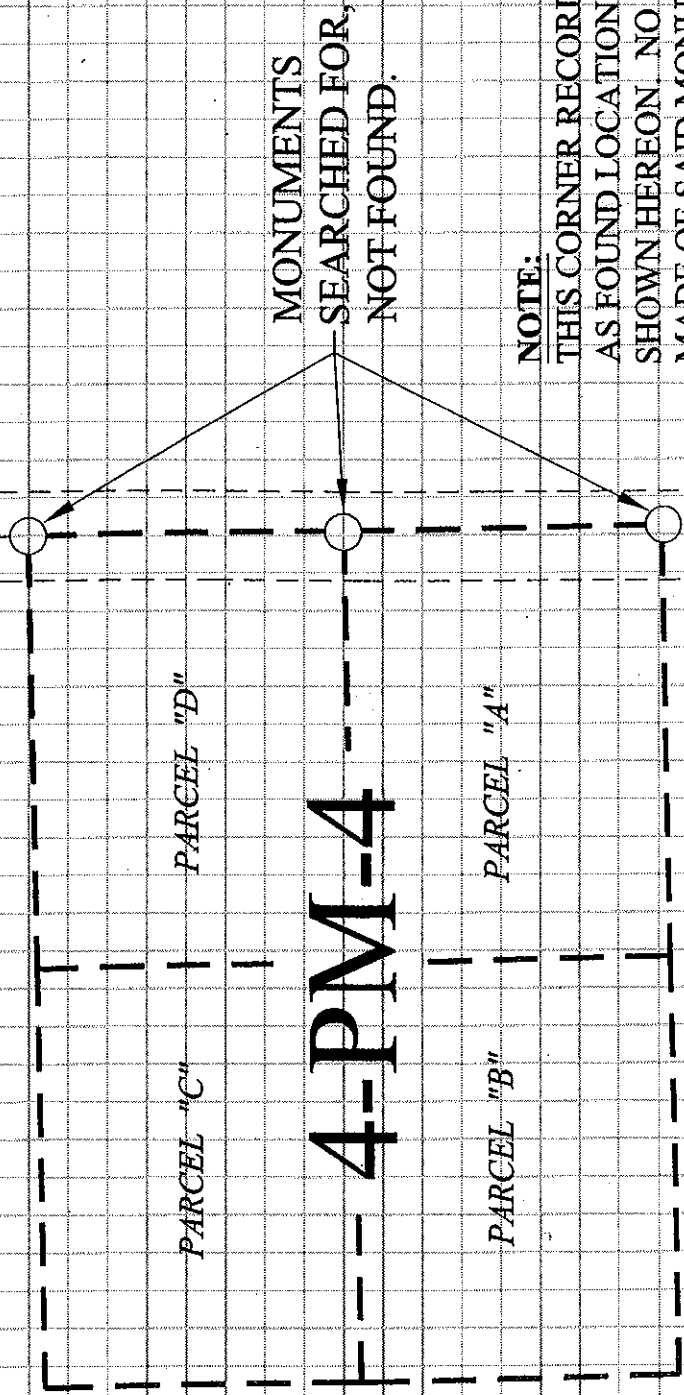
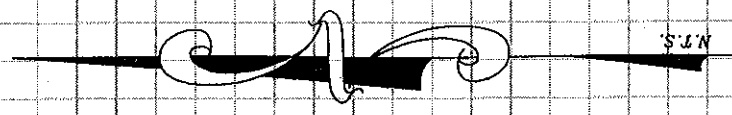
BOOK 14 CORNER RECORDS PAGE 09

E.P. (hyp.)

GIBSON PI (D 1016)

BARTON RD. (E 0071)

Ed RxR SPIKE, NO LEGIBLE MARKINGS, SET MAG-NAIL W/ 1-1/4" BRASS TAG STAMPED "PLACER CO SURVEYOR"



MONUMENTS SEARCHED FOR, NOT FOUND.

NOTE:

THIS CORNER RECORD REPRESENTS THE AS FOUND LOCATION OF THE MONUMENTS SHOWN HEREON. NO SURVEY HAS BEEN MADE OF SAID MONUMENTS.