

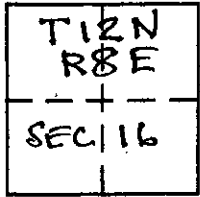
CORNER RECORD

COUNTY OF PLACER, CALIFORNIA

City of AUBURN

Document Number 20100033

Brief Legal Description PARCEL "A" BOOK 15 PARCEL MAPS AT PAGE 15 P.C.R.



CORNER TYPE

- Government Corner
- Meander
- Rancho
- Date of Survey _____
- Control
- Property
- Other

COORDINATES (Optional)

N. _____
 E. _____
 Zone _____ Datum _____
 Elev. _____

Corner — Left as found Found and tagged Established Reestablished Rebuilt

Identification and type of corner found: Evidence used to identify or procedure used to establish or reestablish corner:

FOUND ORIGINAL MONUMENTS PER BK 15 PM 15 AND BK 21 PM 127 TO RE-ESTABLISH PROPERTY CORNERS IN RECORD POSITION.

A description of the physical condition of the monument as found and as set or reset: SET 3/4" REBAR W/ PLASTIC CAP LS 5907. FOUND MONUMENTS AS SHOWN.

SURVEYOR'S STATEMENT

This Corner Record was prepared by me or under my direction in conformance with the Land

Surveyors' Act on October 5 2010.

Signed Edward M. Giuliani L.S. or R.C.E. Number L5907



COUNTY SURVEYOR'S STATEMENT

This Corner Record was received _____ 20 _____ and examined

and filed November 30 2010.

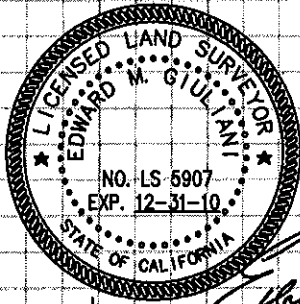
Signed Leslie Amshery Title Deputy
PL56584



County Surveyor's Comment _____

BOOK 14 CORNER RECORDS PAGE 11

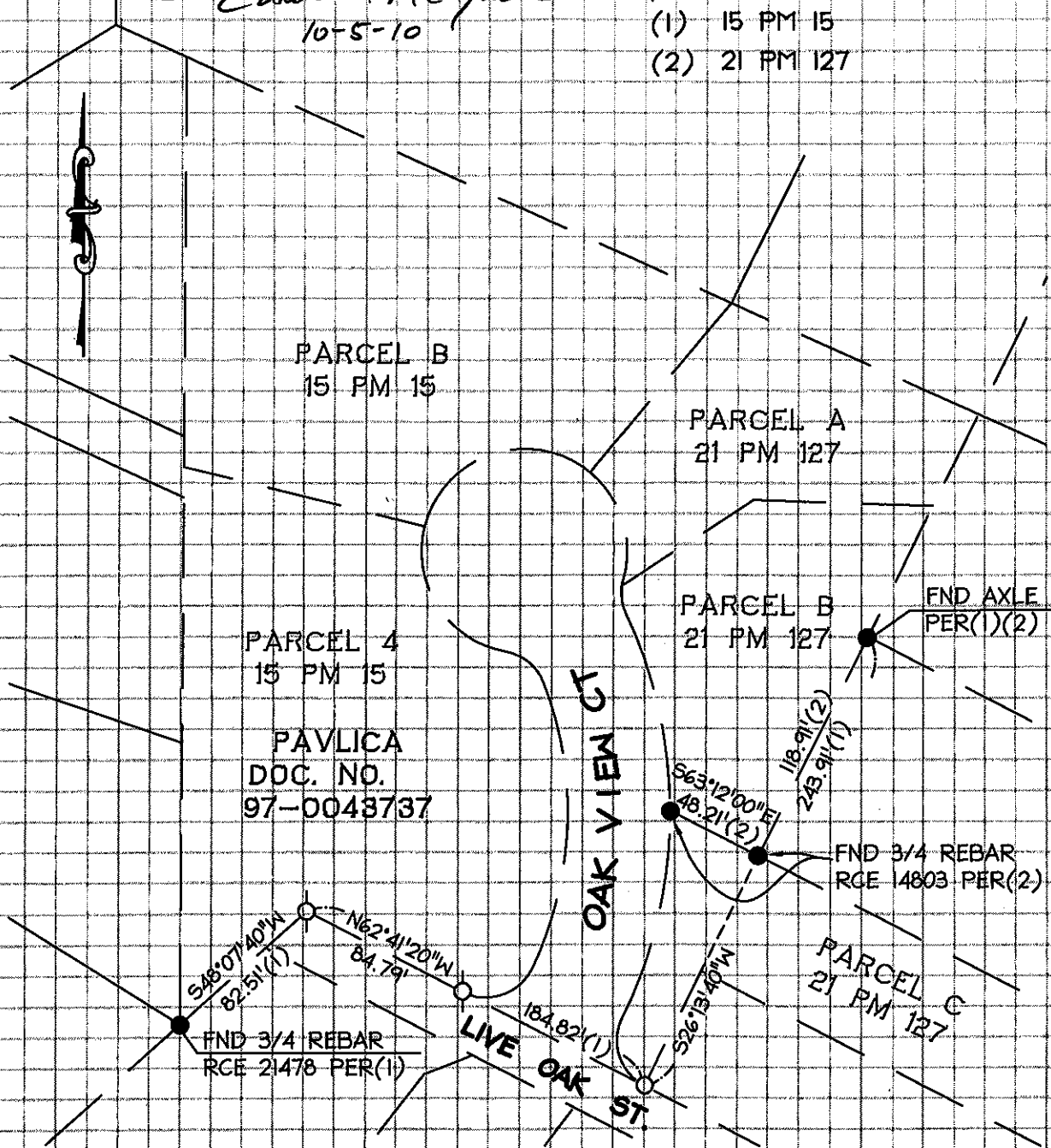
A PORTION OF THE NE. 1/4 OF SEC. 16,
T12N-R8E, M.D.M.
PLACER COUNTY, CALIFORNIA.
CITY OF AUBURN



Edward M Giuliani
10-5-10

LEGEND

- FOUND AS NOTED
- NOTHING FND OR SET
- ♂ SET 3/4 RBR LS 5907
- (1) 15 PM 15
- (2) 21 PM 127



BOOK 14 CORNER RECORDS PAGE 11