

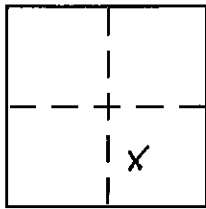
CORNER RECORD

Document Number 20100034

City of _____

County of PLACER, California

Brief Legal Description LOT 70, DOWAG POINT UNIT No. 2 SUBDIVISION, G/MAP/7, O.R.P.C.



SEC. 33
T. 16 N.
R. 17 E.
M.D.B. & M.

CORNER TYPE

Government Corner Control
Meander Property
Rancho Other
Date of Survey 9/8/2010

COORDINATES (Optional)

N. _____
E. _____
Zone _____ NAD27 NAD83
NAD83 Epoch _____
Elev. _____
Vert. Datum: NGVD29 NAVD88
Meas. Units: Metric Imperial

Corner - Left as found Found and tagged Established Reestablished Rebuilt

Identification and type of corner found: Evidence used to identify or procedure used to establish or reestablish the corner:
USED RECORD DIMENSIONS AND FOUND MONUMENTS PER G/MAP/7 AND 18/SUR/75, O.R.P.C. TO RE-ESTABLISH THE MISSING CORNER OF LOT 70, AS SHOWN ON ACCOMPANYING PLAT.

A description of the physical condition of the monument as found and as set or reset:
SET 5/8" REBAR WITH YELLOW PLASTIC CAP LS-7429
FOUND MONUMENT AS SHOWN ON PLAT

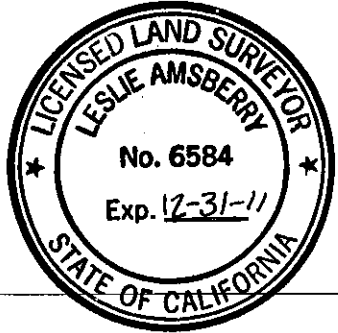
SURVEYOR'S STATEMENT

This Corner Record was prepared by me or under my direction in conformance with the Land Surveyor's Act on September 13, 2010
Signed Matthew S. Webb P.L.S. or R.C.E. No. 7429



COUNTY SURVEYOR'S STATEMENT

This Corner Record was received _____
and examined and filed DECEMBER 1, 2010
Signed Leslie Amsherry P.L.S. or R.C.E. No. 6584
Title Deputy



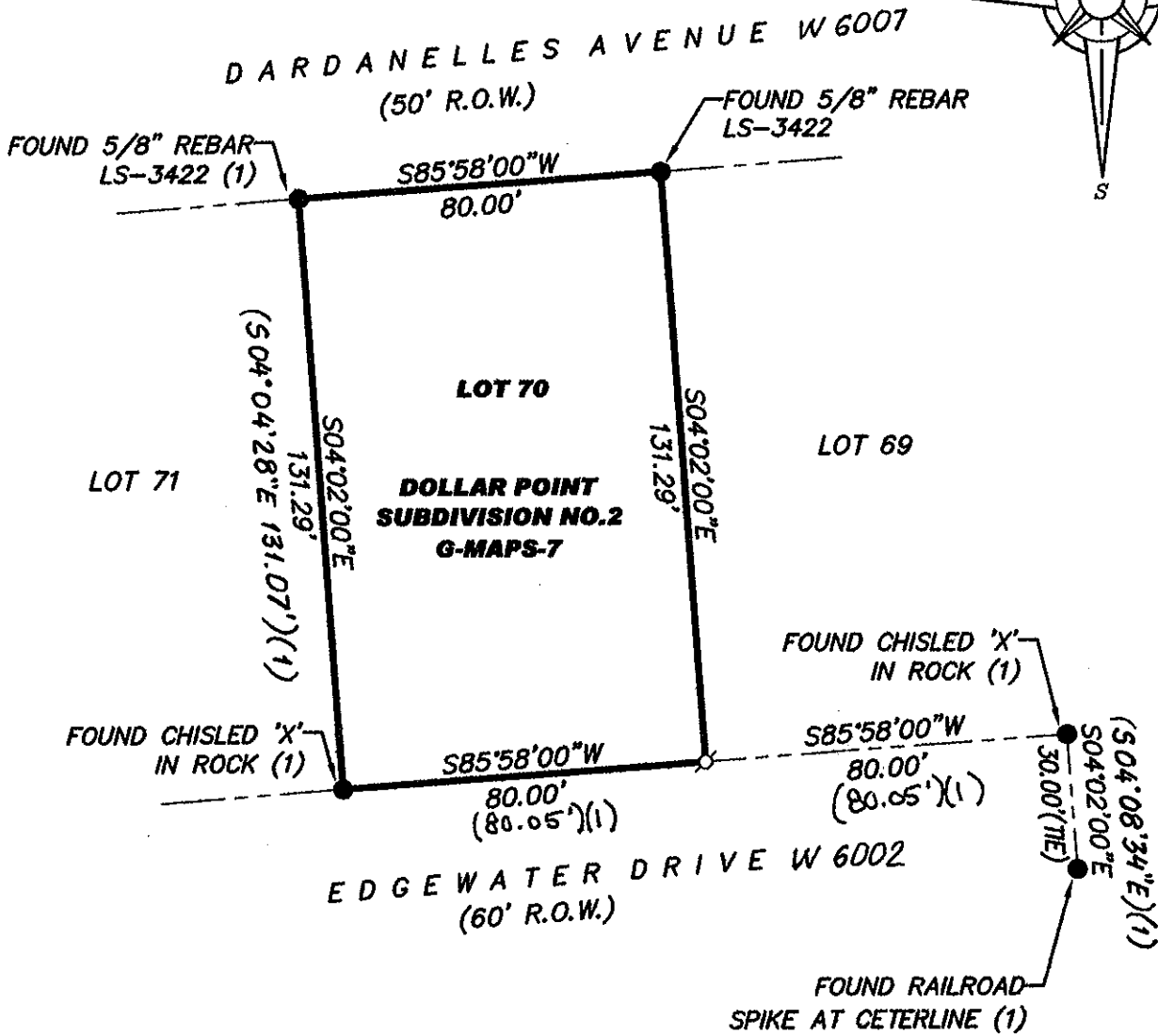
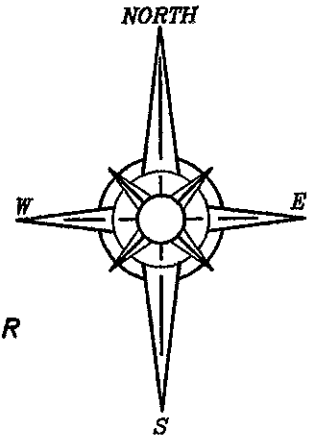
County Surveyor's Comment _____

BOOK 14 CORNER RECORDS PAGE 14

PLAT OF SURVEY

LOT 70, DOLLAR POINT, UNIT NO. 2 SUBDIVISION, AS FILED IN BOOK G OF MAPS AT PAGE 7, OFFICIAL RECORDS PLACER COUNTY, CALIFORNIA. A PORTION OF SECTION 33, TOWNSHIP 16 N., RANGE 17 E., M.D.B. & M.

SCALE 1" = 40' DATE OF SURVEY 9/8/2010



- FOUND MONUMENT AS SHOWN HEREON
- SET 5/8" REBAR WITH YELLOW PLASTIC CAP L.S. 7429
- (1) RECORD PER 18/SUR/75, O.R.P.C.

J/N 1858.00

BOOK 14 CORNER RECORDS PAGE 14