

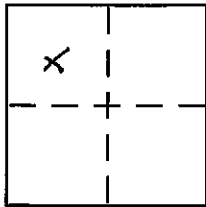
CORNER RECORD

Document Number 20100035

City of _____

County of PLACER, California

Brief Legal Description LOT 78, CARNELIAN HEIGHTS No. 2 SUBDIVISION, H/MAPS/29 O.R.P.C.



Sec. 28
T. 16 N.
R. 17 E.
M.D.B. & M.

CORNER TYPE

- Government Corner Control
- Meander Property
- Rancho Other
- Date of Survey _____

COORDINATES (Optional)

N. _____
 E. _____
 Zone _____ NAD27 NAD83
 NAD83 Epoch _____
 Elev. _____
 Vert. Datum: NGVD29 NAVD88
 Meas. Units: Metric Imperial

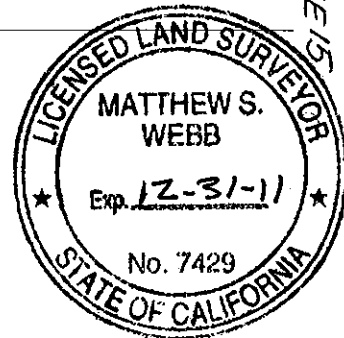
Corner - Left as found Found and tagged Established Reestablished Rebuilt

Identification and type of corner found: Evidence used to identify or procedure used to establish or reestablish the corner:
USED RECORD DIMENSIONS AND FOUND MONUMENTS PER H/MAPS/29, H/MAPS/87 AND 22/PM/38 O.R.P.C. TO RE-ESTABLISH THE MISSING CORNER OF LOT 78, AS SHOWN ON ACCOMPANYING PLAT.

A description of the physical condition of the monument as found and as set or reset:
SET 5/8" REBAR WITH YELLOW PLASTIC CAP LS-7429
FOUND MONUMENT AS SHOWN ON PLAT

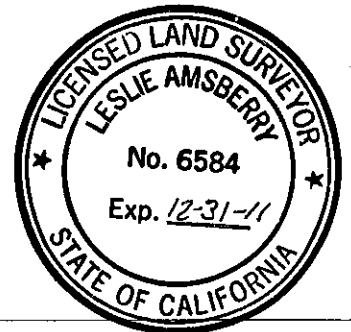
SURVEYOR'S STATEMENT

This Corner Record was prepared by me or under my direction in conformance with the Land Surveyor's Act on September 06 2010
Signed Matthew S. Webb P.L.S or R.C.E. No. 7429



COUNTY SURVEYOR'S STATEMENT

This Corner Record was received _____
and examined and filed December 1, 2010
Signed Leslie Amsberry P.L.S or R.C.E. No. 6584
Title Deputy



County Surveyor's Comment _____

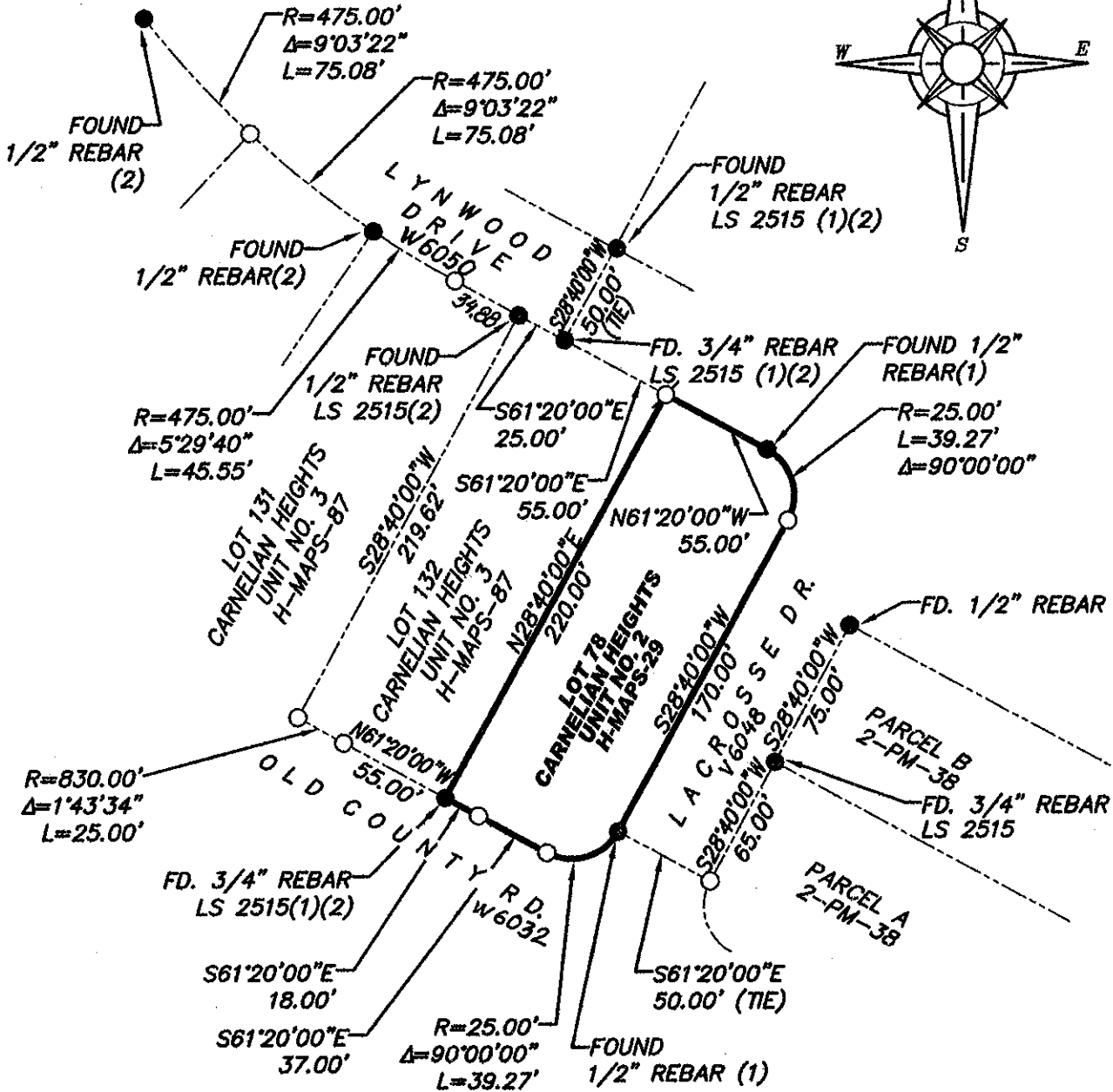
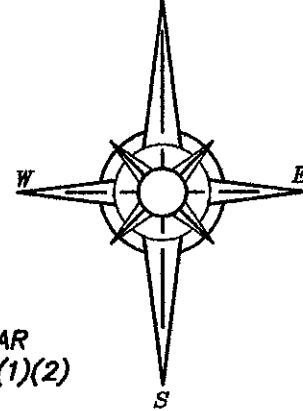
BOOK 14 CORNER RECORDS PAGE 15

PLAT OF SURVEY

LOT 78, CARNELIAN HEIGHTS NO. 2, AS FILED IN BOOK H OF MAPS AT PAGE 29, OFFICIAL RECORDS PLACER COUNTY, CALIFORNIA. A PORTION OF THE N.W. 1/4 OF SECTION 28, TOWNSHIP 16 N., RANGE 17 E., M.D.B. & M.

SCALE 1" = 80' DATE OF SURVEY 8/24/2010

NORTH



- FOUND MONUMENT AS SHOWN HEREON
- SET 5/8" REBAR WITH YELLOW PLASTIC CAP L.S. 7429
- DIMENSION PT (NOTHING FOUND OR SET)
- (1) RECORD PER H/MAPS/29, O.R.P.C.
- (2) RECORD PER H/MAPS/87, O.R.P.C.

J/N 1872.00

BOOK 14 CORNER RECORDS PAGE 15