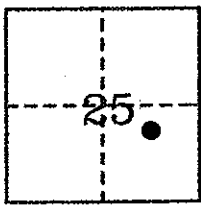


CORNER RECORD

COUNTY OF PLACER, CALIFORNIA

City of _____ Document Number 20100028
Brief Legal Description LOT 10 SKYLAND SUB. F. MAPS 13



T.15N.,R.16E.
M.D.B.& M.

CORNER TYPE

Government Corner Control
Meander Property
Rancho Other
Date of Survey AUGUST 2010

COORDINATES
(Optional)

N. _____
E. _____
Zone _____ Datum _____
Elev. _____

Corner— Left as found Found and tagged Established Reestablished Rebuilt

Identification and type of corner found: Evidence used to identify or procedure used to establish or reestablish corner:

● ~ fd. monument as indicated

ESTABLISHED WESTERN LINE LOT 10 , 50' EAST

OF RECOVERED MONUMENTS ON WESTERN R.O.W. PER RECORD LOCATIONS.

PRORATED EASTERN LINE LOT AS INDICATED. NOTE: DIFFERENCES IN RECORD AS

SHOWN ARE NOT CONSIDERED A MATERIAL DISCREPANCY FOR THE TAHOE AREA.

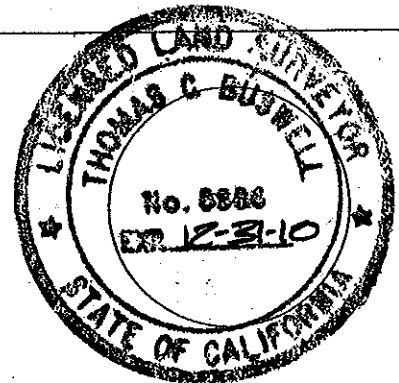
A description of the physical condition of the monument as found and as set or reset:

Ø ~ set 5/8" rebar with 2" aluminum cap stamped "TAHOE BASIN LAND SURVEYING, THOMAS C. BUSWELL, LS 5886".

SURVEYOR'S STATEMENT

This Corner Record was prepared by me or under my direction in conformance with the Land Surveyor's Act on August 20 10

Signed Thomas C. Buswell L.S. or R.C.E. Number 5886
Thomas C. Buswell, PLS



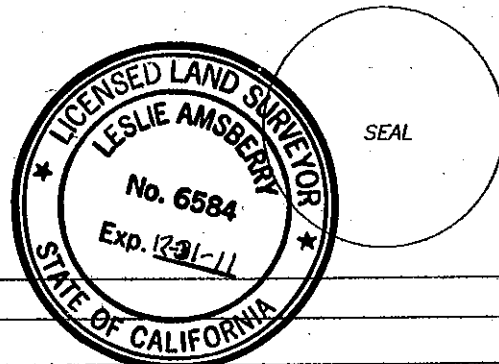
COUNTY SURVEYOR'S STATEMENT

This Corner Record was Received _____ 20 _____ and Examined _____

and filed DECEMBER 28 2010

Signed Leslie Amshery Title DEPUTY

County Surveyor's Comment _____



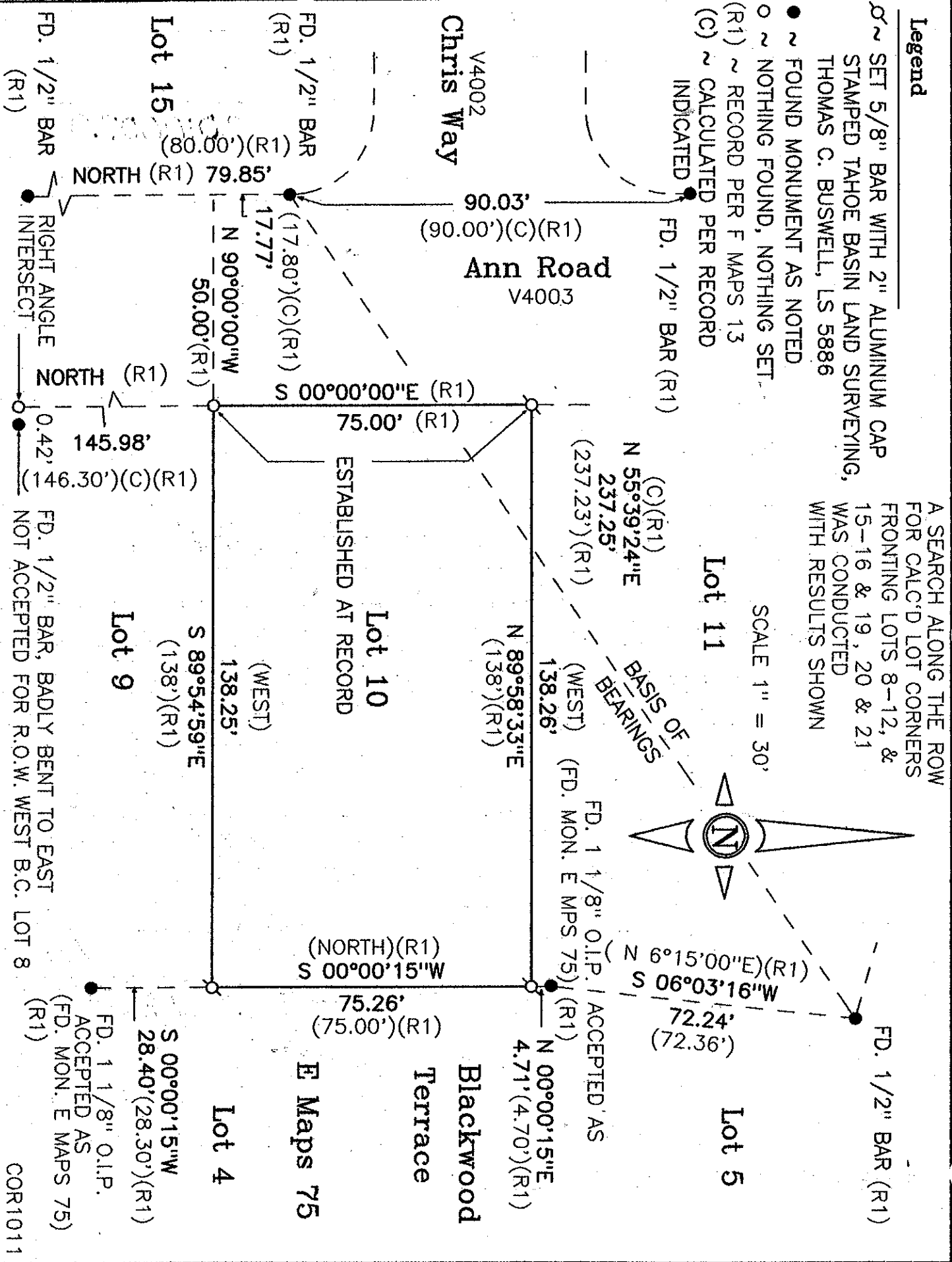
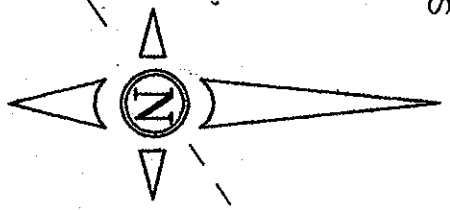
BOOK 14, CORNER RECORDS, PAGE 20

Legend

- ~ SET 5/8" BAR WITH 2" ALUMINUM CAP STAMPED TAHOE BASIN LAND SURVEYING, THOMAS C. BUSWELL, LS 5886
- ~ FOUND MONUMENT AS NOTED
- ~ NOTHING FOUND, NOTHING SET.
- (R1) ~ RECORD PER F MAPS 13
- (C) ~ CALCULATED PER RECORD INDICATED

A SEARCH ALONG THE ROW FOR CALC'D LOT CORNERS FRONTING LOTS 8-12, & 15-16 & 19, 20 & 21 WAS CONDUCTED WITH RESULTS SHOWN

SCALE 1" = 30'



BOOK RECORD, PAGE 20