

CORNER RECORD

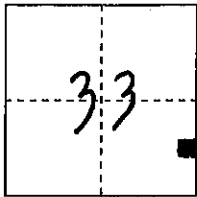
COUNTY OF PLACER, CALIFORNIA

City of _____

Document Number 2010 0059

Brief Legal Description 3-PM-114

PARCEL MAP No. 70156



S. 33

T. 11 N.

R. 7 E.

CORNER TYPE

Government Corner

Meander

Rancho

Date of Survey _____

Control

Property

Other

COORDINATES

(Optional)

N. _____

E. _____

Zone _____ Datum _____

Elev. _____

Corner--- Left as found Found and tagged Established Reestablished Rebuilt

Identification and type of corner found: Evidence used to identify or procedure used to establish or reestablish corner:

FOUND 60 D NAILS IN TRAVELED WAY of BARTON RD Per PARCEL
MAP No. 70156, Book 3 of PARCEL MAPS, PAGE 114 O.R.P.C. FROM FOUND
MONUMENTS ESTABLISHED REFERENCE POINTS PRIOR TO ASPHALT OVERLAY

A description of the physical condition of the monument as found and as set or reset:

FROM REFERENCE POINTS SET MAG-NAIL w/ 1/4" BRASS TAG STAMPED
" PLACER CO SURVEYOR" CENTERED OVER FOUND MONUMENTS

SURVEYOR'S STATEMENT

This Corner Record was prepared by me or under my direction
 in conformance with the Professional Land Surveyors' Act

on DECEMBER 3 2010.

Signed [Signature]

L.S. or P.C.E. Number 7887 Expiration Date _____



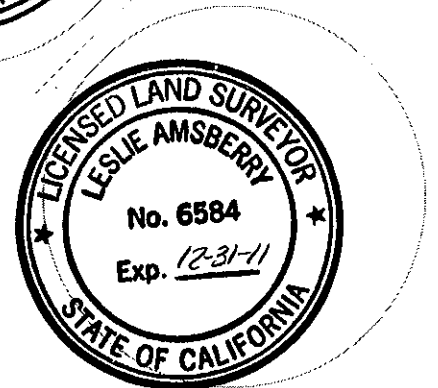
COUNTY SURVEYOR'S STATEMENT

This Corner Record was received _____ 20____

and examined and filed DECEMBER 23 2010.

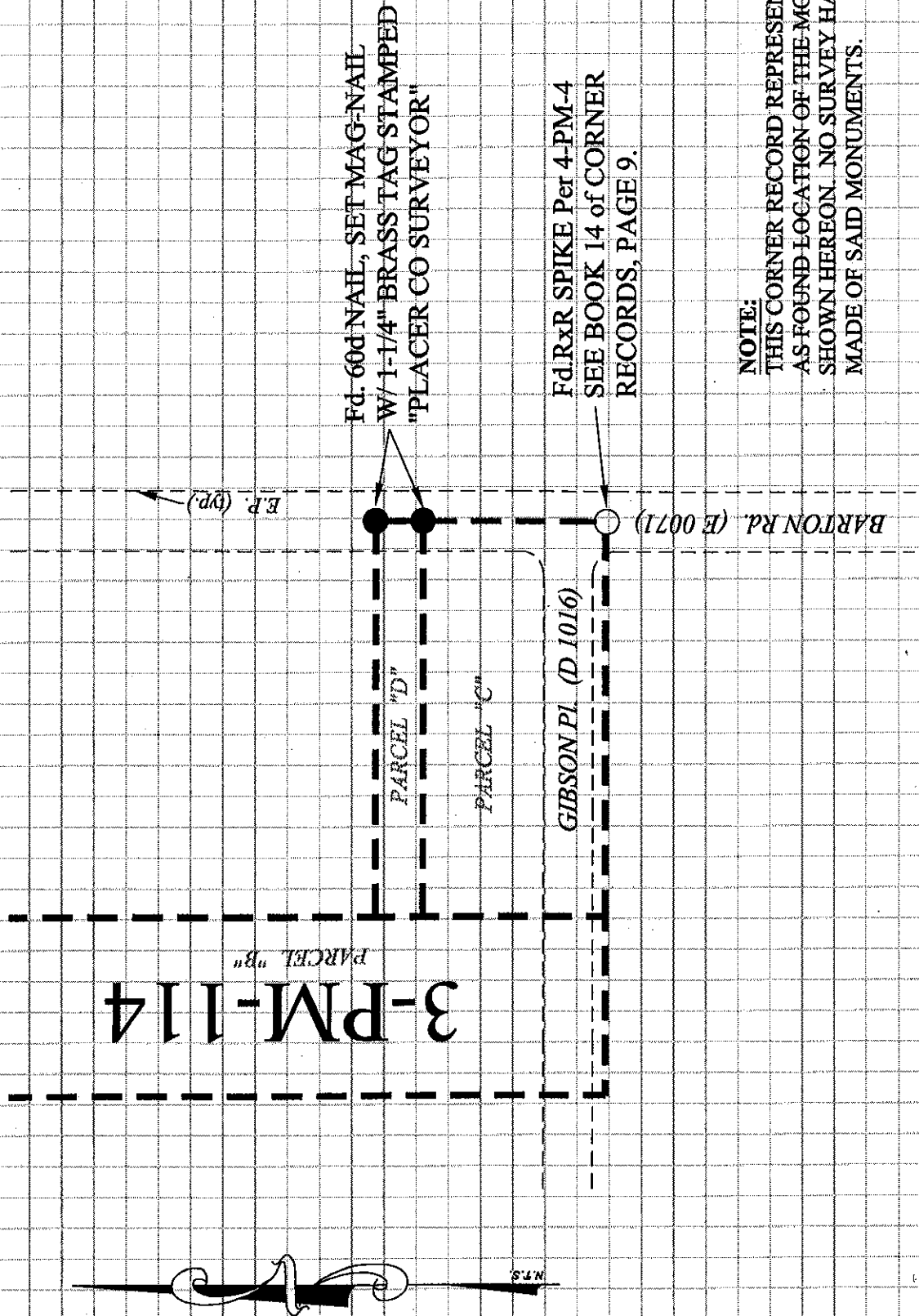
Signed [Signature] Title DEPUTY

L.S. or P.C.E. Number 6584 Expiration Date 12-31-11



County Surveyor's Comment _____

BOOK 14 CORNER RECORDS PAGE 22



NOTE:
 THIS CORNER RECORD REPRESENTS THE
 AS FOUND LOCATION OF THE MONUMENTS
 SHOWN HEREON. NO SURVEY HAS BEEN
 MADE OF SAID MONUMENTS.