

CORNER RECORD

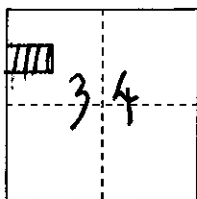
COUNTY OF PLACER, CALIFORNIA

City of _____

Document Number 2010 0060

Brief Legal Description 30-PM-149

PARCEL MAP No. 75824



S. 34

CORNER TYPE

COORDINATES

(Optional)

T. 11 N.

Government Corner

Control

N. _____

Meander

Property

E. _____

R. 7 E.

Rancho

Other

Zone _____ Datum _____

Date of Survey _____

Elev. _____

Corner---

Left as found

Found and tagged

Established

Reestablished

Rebuilt

Identification and type of corner found: Evidence used to identify or procedure used to establish or reestablish corner:

FOUND R-R SPIKES IN TRAVELED WAY of BARTON Rd. Per PARCEL MAP No. 75824,
BOOK 30 of PARCEL MAPS, PAGE 149 D.R.P.C. FROM FOUND MONUMENTS
ESTABLISHED REFERENCE POINTS PRIOR TO ASPHALT OVERLAY

A description of the physical condition of the monument as found and as set or reset:

FROM REFERENCE POINTS SET MAG-NAIL w/ 1/4" BRASS TAG STAMPED
" PLACER CO SURVEYOR" CENTERED OVER FOUND MONUMENT

SURVEYOR'S STATEMENT

This Corner Record was prepared by me or under my direction in conformance with the Professional Land Surveyors' Act

on DECEMBER 6, 2010.

Signed [Signature]

L.S. or P.C.E. Number 7887 Expiration Date MAR. 31, 2011



COUNTY SURVEYOR'S STATEMENT

This Corner Record was received _____ 20____

and examined and filed December 28, 2010.

Signed [Signature] Title Deputy

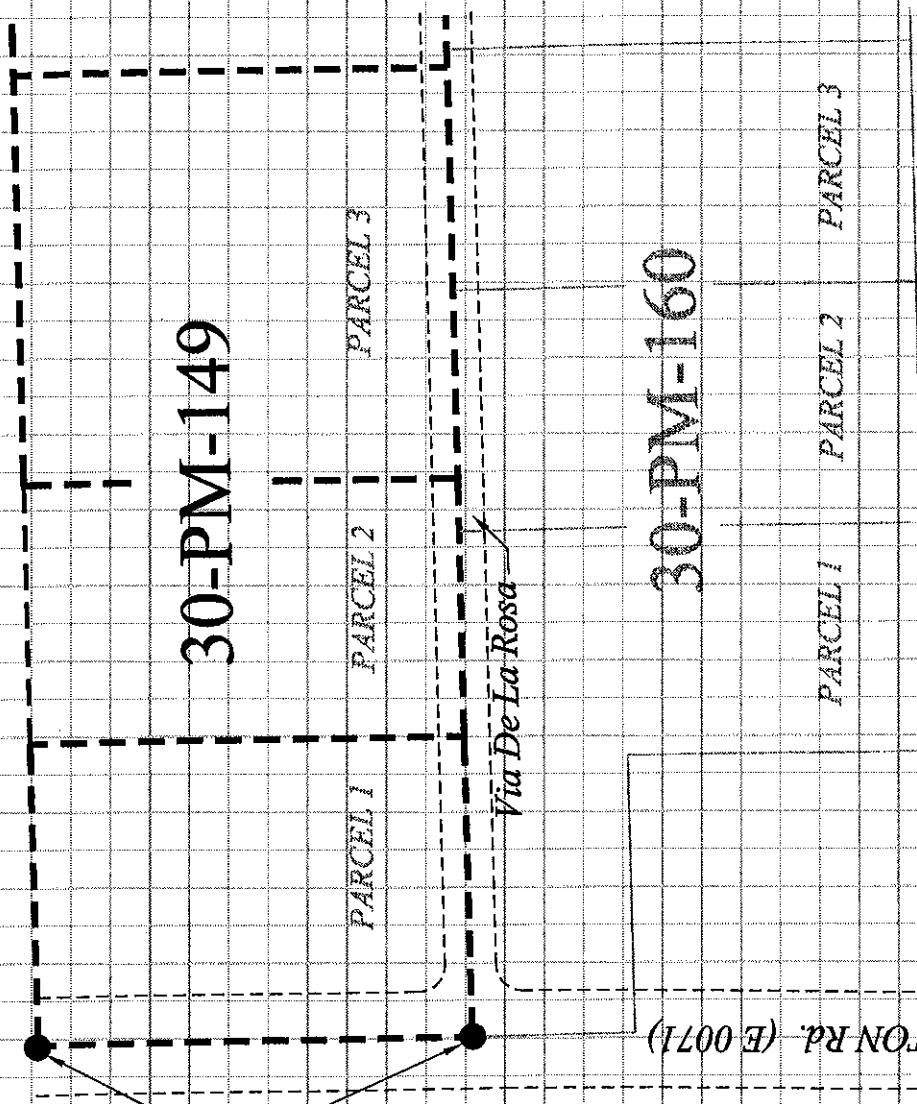
L.S. or P.C.E. Number 6584 Expiration Date 12-31-2011



County Surveyor's Comment _____

BOOK 14 CORNER RECORDS PAGE 23

Fd. RxR SPIKE, NO LEGIBLE
MARKINGS, SET MAG-NAIL
W/ 1-1/4" BRASS TAG STAMPED
"PLACER CO SURVEYOR"



NOTE:
THIS CORNER RECORD REPRESENTS THE
AS FOUND LOCATION OF THE MONUMENTS
SHOWN HEREON. NO SURVEY HAS BEEN
MADE OF SAID MONUMENTS.

E.P. (typ.)