

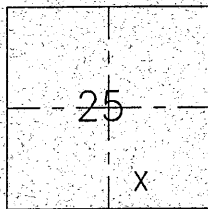
CORNER RECORD

Document Number 20110016

City of Roseville

County of Placer, California

Brief Legal Description Lots 24 thru 34 as shown on the "Final Map of Westpark Village 8" recorded in Book "BB" of Maps, Page 42, Placer County Records.



CORNER TYPE

S.25 Government Corner Control
 T.11 N. Meander Property
 R.5 E. Rancho Other
 Date of Survey 02/04/2011

COORDINATES (Optional)

N. _____
 E. _____
 Zone _____ NAD27 NAD83
 NAD83 Epoch _____
 Elev. _____
 Vert. Datum: NGVD29 NAVD88
 Meas. Units: Metric Imperial

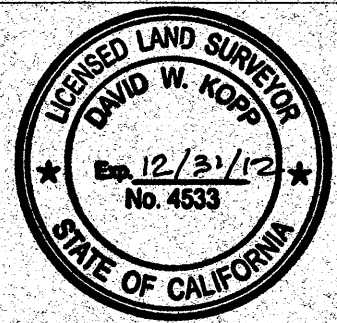
Corner - Left as found Found and tagged Established Reestablished Rebuilt

Identification and type of corner found: Evidence used to identify or procedure used to establish or reestablish the corner:
 Monuments were set at 5.00 feet from the actual rear lot corner on the interior of the lot as a reference corner. Existing front lot corners were occupied and record angles and distances were used to set monuments.

A description of the physical condition of the monument as found and as set or reset:
 Found record monuments (1" Brass Disc "LS 4533") at a 1' extension for all front lot corners.
 Set a 5/8" rebar with plastic cap stamped LS 4533.

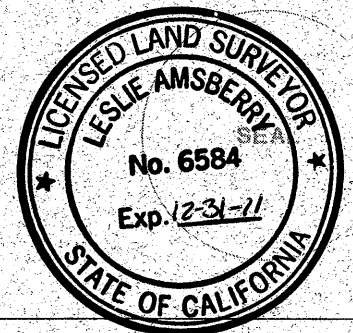
SURVEYOR'S STATEMENT

This Corner Record was prepared by me or under my direction in conformance with
 The Land Surveyor's Act on February 10 2011
 Signed [Signature] P.L.S. or R.C.E. No. 4533



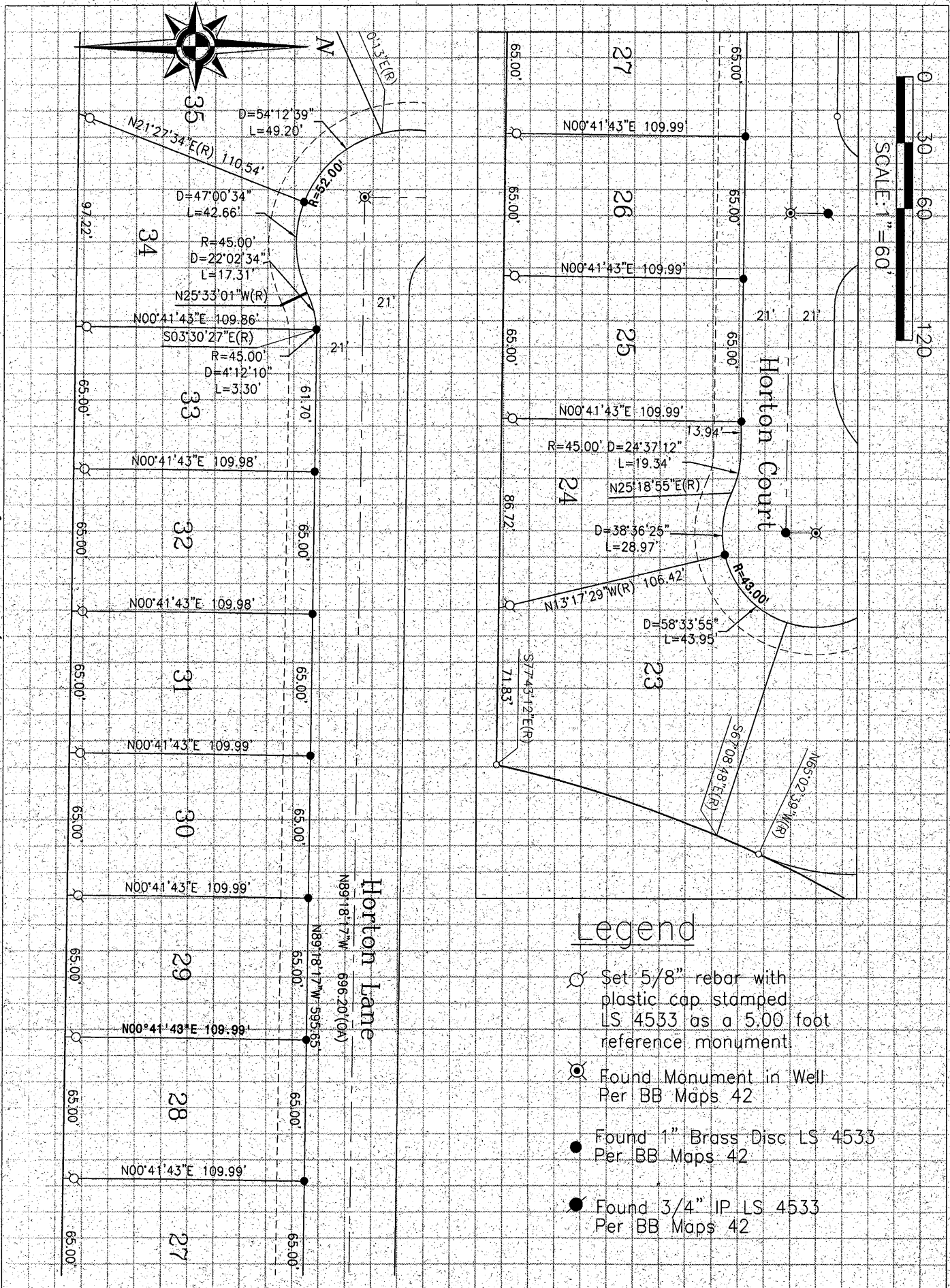
COUNTY SURVEYOR'S STATEMENT

This Corner Record was received _____
 and examined and filed MARCH 1, 2011
 Signed [Signature] P.L.S. or R.C.E. No. 6584
 Title Deputy County Surveyor



County Surveyor's Comment _____

BOOK 14 CORNER RECORDS, PAGE 34



Legend

- Set 5/8" rebar with plastic cap stamped LS 4533 as a 5.00 foot reference monument.
- ⊗ Found Monument in Well Per BB Maps 42
- Found 1" Brass Disc LS 4533 Per BB Maps 42
- Found 3/4" IP LS 4533 Per BB Maps 42