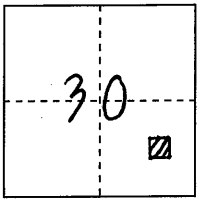


CORNER RECORD

COUNTY OF PLACER, CALIFORNIA

City of _____ Document Number 20100076
 Brief Legal Description N-MAPS-88 BELL MEADOWS UNIT 1 TRACT No. 557



S. 30

T. 13 N.

R. 8E.

CORNER TYPE

Government Corner Control
 Meander Property
 Rancho Other
 Date of Survey _____

COORDINATES

(Optional)

N. _____
 E. _____
 Zone _____ Datum _____
 Elev. _____

Corner--- Left as found Found and tagged Established Reestablished Rebuilt

Identification and type of corner found: Evidence used to identify or procedure used to establish or reestablish corner:
FOUND R-R SPIKES IN TRAVELED WAY of MEADOW BROOK Dr. & MEADOW BROOK Ct.
PER MAP of BELL MEADOWS UNIT 1, TRACT No. 557, Book N of MAPS, PAGE 88 O.R.P.C.
FROM FOUND MONUMENTS ESTABLISHED REFERENCE POINTS PRIOR TO ASPHALT
OVERLAY

A description of the physical condition of the monument as found and as set or reset: _____
FROM REFERENCE POINTS SET MAG-NAIL W/ 1/4" BRASS TAG STAMPED
"PLACER CO SURVEYOR" CENTERED OVER FOUND MONUMENTS.

SURVEYOR'S STATEMENT

This Corner Record was prepared by me or under my direction
 in conformance with the Professional Land Surveyors' Act
 on DECEMBER 22 2011.

Signed [Signature]

L.S. or R.C.E. Number 7887 Expiration Date MAR. 31, 2011



COUNTY SURVEYOR'S STATEMENT

This Corner Record was received _____ 20____
 and examined and filed MARCH 10 2011.

Signed [Signature] Title Deputy County Surveyor

L.S. or R.C.E. Number 6584 Expiration Date 12-31-11



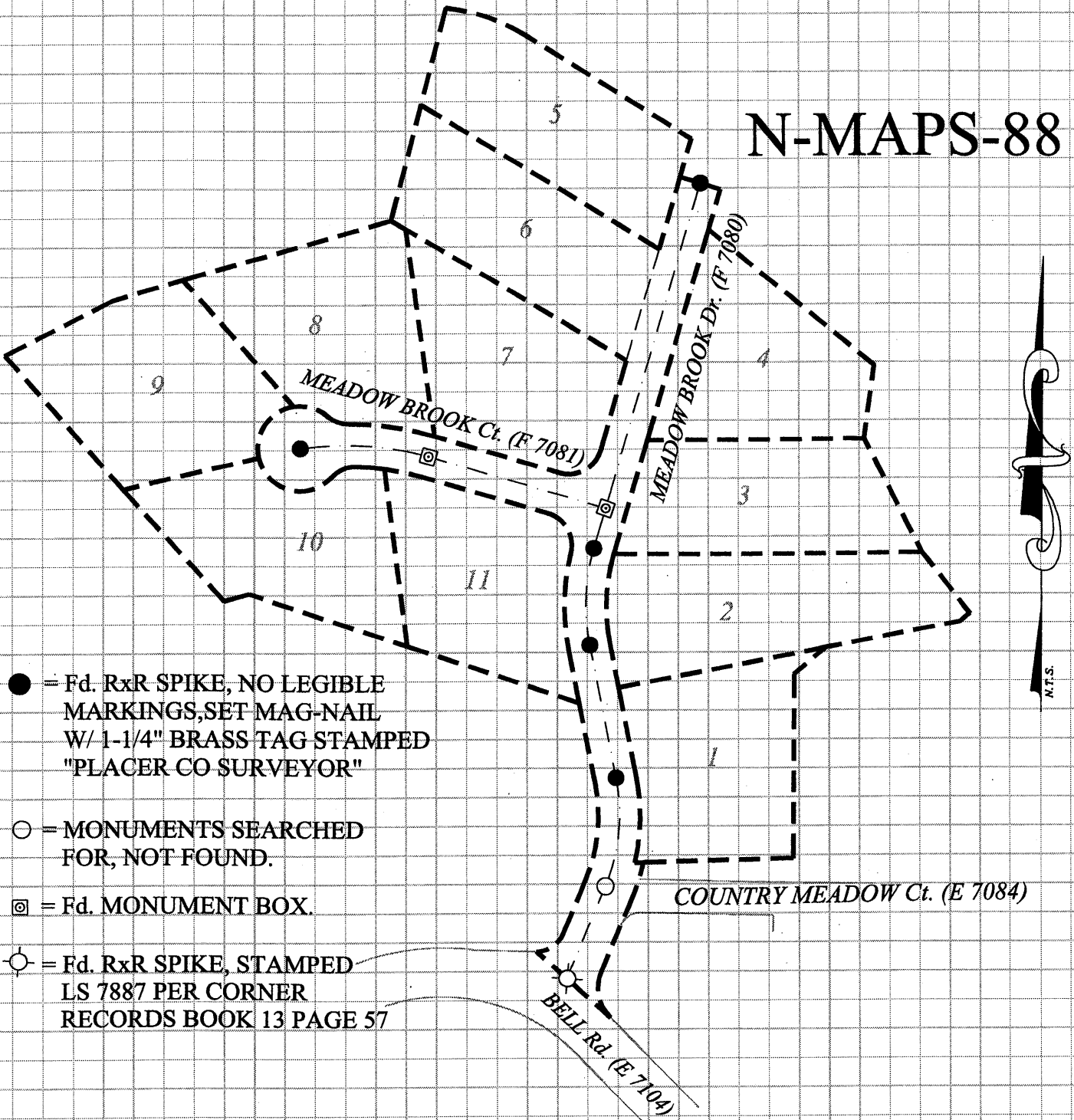
County Surveyor's Comment _____

BOOK 14 CORNER RECORDS PAGE 41

NOTE:

THIS CORNER RECORD REPRESENTS THE AS FOUND LOCATION OF THE MONUMENTS SHOWN HEREON. NO SURVEY HAS BEEN MADE OF SAID MONUMENTS. THE RELATIONSHIP OF FOUND MONUMENTS TO N-MAPS-88 HAS NOT BEEN DETERMINED BY THIS CORNER RECORD.

BOOK 4 CORNER RECORDS PAGE 41



- = Fd. RxR SPIKE, NO LEGIBLE MARKINGS, SET MAG-NAIL W/ 1-1/4" BRASS TAG STAMPED "PLACER CO SURVEYOR"
- = MONUMENTS SEARCHED FOR, NOT FOUND.
- ⊠ = Fd. MONUMENT BOX.
- ⊙ = Fd. RxR SPIKE, STAMPED LS 7887 PER CORNER RECORDS BOOK 13 PAGE 57