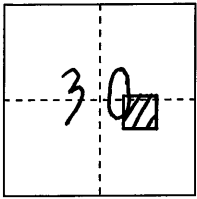


CORNER RECORD

COUNTY OF PLACER, CALIFORNIA

City of \_\_\_\_\_ Document Number 20110001  
Brief Legal Description Q-MAPS-63 ROCK VIEW ESTATES UNIT II TRACT No. 686



S. 30

CORNER TYPE

COORDINATES (Optional)

T. 19N.

Government Corner

Control

N. \_\_\_\_\_

Meander

Property

E. \_\_\_\_\_

R. 8 E.

Rancho

Other

Zone \_\_\_\_\_ Datum \_\_\_\_\_

Date of Survey NOVEMBER 19, 2010

Elev. \_\_\_\_\_

Corner--- Left as found  Found and tagged  Established  Reestablished  Rebuilt

Identification and type of corner found: Evidence used to identify or procedure used to establish or reestablish corner:  
FOUND R x R SPIKES IN TRAVELED WAY OF ROCK VIEW CT. Per MAP of ROCK VIEW ESTATES UNIT II, TRACT No. 686, BOOK Q of MAPS, PAGE 63 O.R.P.C FROM FOUND MONUMENTS ESTABLISHED REFERENCE POINTS PRIOR TO ASPHALT OVERLAY.

A description of the physical condition of the monument as found and as set or reset:  
FROM REFERENCE POINTS SET MAG-NAIL w/ 1/4" BRASS TAG STAMPED "PLACER CO SURVEYOR" CENTERED OVER FOUND MONUMENTS.

SURVEYOR'S STATEMENT

This Corner Record was prepared by me or under my direction in conformance with the Professional Land Surveyors' Act on JANUARY 2011.

Signed [Signature]

L.S. or R.C.E. Number 7887 Expiration Date MAR. 31, 2011



COUNTY SURVEYOR'S STATEMENT

This Corner Record was received \_\_\_\_\_ 20\_\_\_\_ and examined and filed MARCH 10 2011.

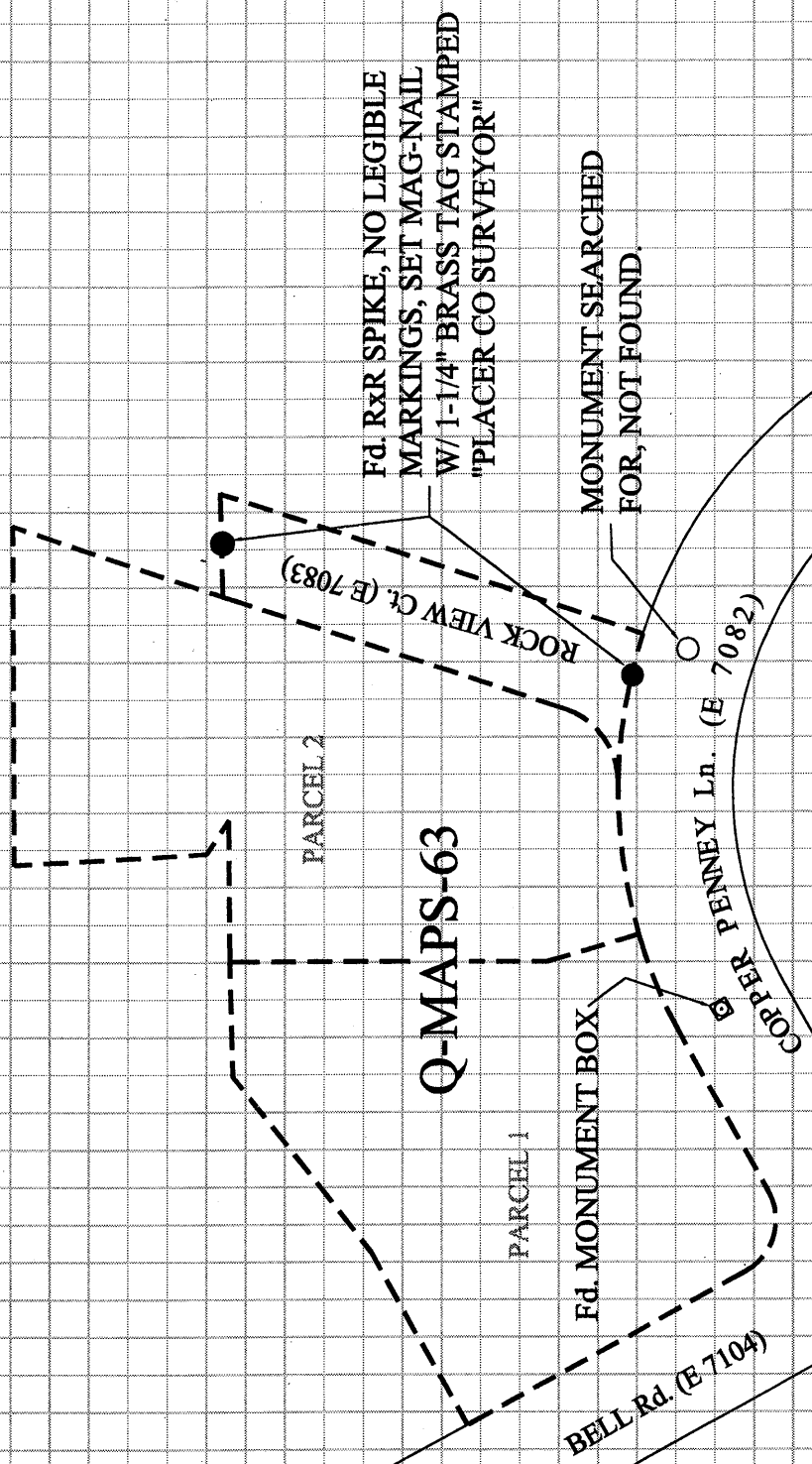
Signed [Signature] Title Deputy County Surveyor

L.S. or R.C.E. Number 6584 Expiration Date 12-31-11



County Surveyor's Comment \_\_\_\_\_  
\_\_\_\_\_  
\_\_\_\_\_

BOOK 14 CORNER RECORDS PAGE 43



Fd. R&R SPIKE, NO LEGIBLE MARKINGS, SET MAG-NAIL W/ 1-1/4" BRASS TAG STAMPED "PLACER CO SURVEYOR"

MONUMENT SEARCHED FOR, NOT FOUND.

**NOTE:**  
 THIS CORNER RECORD REPRESENTS THE AS FOUND LOCATION OF THE MONUMENTS SHOW HEREON. NO SURVEY HAS BEEN MADE OF SAID MONUMENTS. THE RELATIONSHIP OF FOUND MONUMENTS TO Q-MAPS-63 HAS NOT BEEN DETERMINED BY THIS CORNER RECORD.