

CORNER RECORD

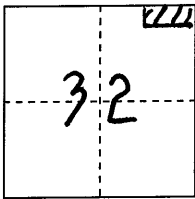
COUNTY OF PLACER, CALIFORNIA

City of _____

Document Number 2011 0004

Brief Legal Description 22-PM-33

PARCEL MAP No. 74436-B



S. 32

CORNER TYPE

COORDINATES

(Optional)

T. 13 N.

Government Corner

Control

N. _____

Meander

Property

E. _____

R. 8 E.

Rancho

Other

Zone _____ Datum _____

Date of Survey NOVEMBER 19, 2010

Elev. _____

Corner---

Left as found

Found and tagged

Established

Reestablished

Rebuilt

Identification and type of corner found: Evidence used to identify or procedure used to establish or reestablish corner:

FOUND R+R SPIKES IN TRAVELED WAY of PROFESSIONAL Dr. HERITAGE OAK PL. Per PARCEL MAP No. 74436-B, BOOK 22 of PARCEL MAPS, PAGE 33 O.R.P.C. FROM FOUND MONUMENTS ESTABLISHED REFERENCE POINTS PRIOR TO ASPHALT OVERLAY.

A description of the physical condition of the monument as found and as set or reset:

FROM REFERENCE POINTS SET MAG-NAIL w/ 1/4" BRASS TAG STAMPED "PLACER CO SURVEYOR" CENTERED OVER FOUND MONUMENTS.

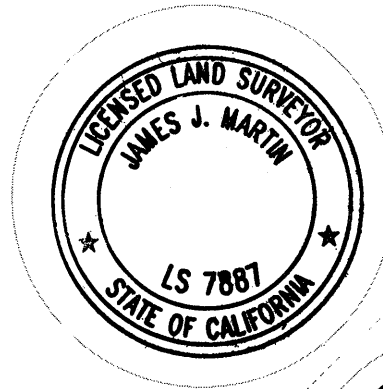
SURVEYOR'S STATEMENT

This Corner Record was prepared by me or under my direction in conformance with the Professional Land Surveyors' Act

on JANUARY 12 20 11.

Signed [Signature]

L.S. or R.C.E. Number 7887 Expiration Date MAR. 31, 2011



COUNTY SURVEYOR'S STATEMENT

This Corner Record was received _____ 20 _____

and examined and filed MARCH 10 20 11.

Signed [Signature] Title Deputy County Surveyor

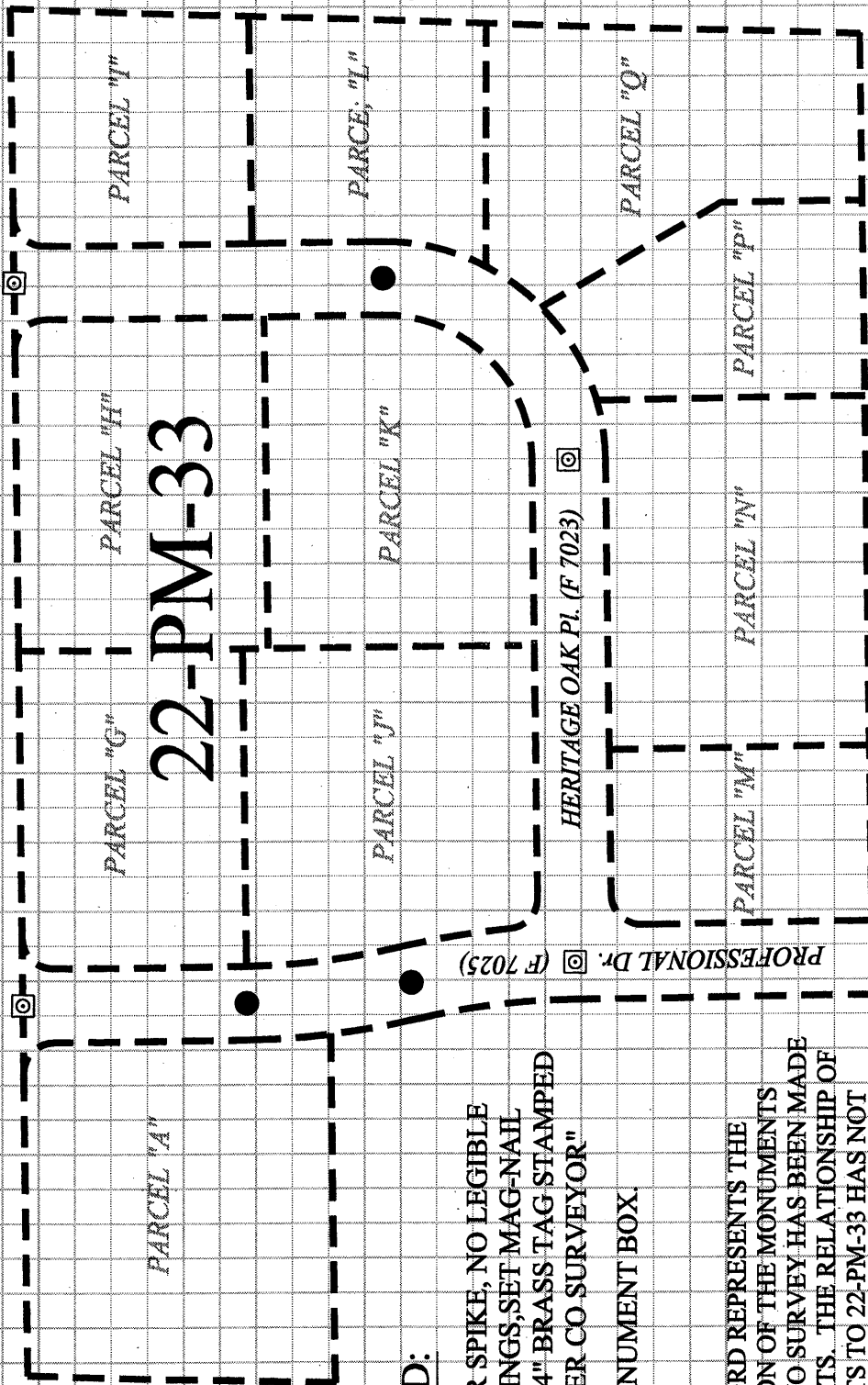
L.S. or R.C.E. Number 6584 Expiration Date 12-31-11



County Surveyor's Comment _____

BOOK 4 CORNER RECORDS PAGE 46

BELL Rd. (E 7104)



LEGEND:

- = Fd. R&R SPIKE, NO LEGIBLE MARKINGS, SET MAG-NAIL W/ 1-1/4" BRASS TAG STAMPED "PLACER CO SURVEYOR"
- ⊠ = Fd. MONUMENT BOX.

NOTE:
 THIS CORNER RECORD REPRESENTS THE AS FOUND LOCATION OF THE MONUMENTS SHOWN HEREON. NO SURVEY HAS BEEN MADE OF SAID MONUMENTS. THE RELATIONSHIP OF FOUND MONUMENTS TO 22-PM-33 HAS NOT BEEN DETERMINED BY THIS CORNER RECORD.