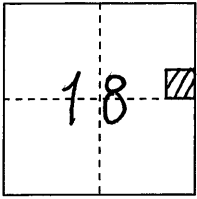


CORNER RECORD

COUNTY OF PLACER, CALIFORNIA

City of \_\_\_\_\_ Document Number 20110007
Brief Legal Description 21-PM-107 PARCEL MAP No. 74417



S. 18
T. 12 N.
R. 6 E.

CORNER TYPE

Government Corner [ ] Control [ ]
Meander [ ] Property [ ]
Rancho [ ] Other [x]
Date of Survey Nov. 10, 2010

COORDINATES

(Optional)
N. \_\_\_\_\_
E. \_\_\_\_\_
Zone \_\_\_\_\_ Datum \_\_\_\_\_
Elev. \_\_\_\_\_

Corner--- Left as found [x] Found and tagged [ ] Established [ ] Reestablished [x] Rebuilt [ ]

Identification and type of corner found: Evidence used to identify or procedure used to establish or reestablish corner:
FOUND MONUMENTS, AS SHOWN, IN TRAVELED WAY OF NELSON LN. Per PARCEL MAP No. 74417, BOOK 21 of PARCEL MAPS, PAGE 107, O.R.P.C. FROM FOUND MONUMENTS ESTABLISHED REFERENCE POINTS PRIOR TO ASPHALT OVERLAY.

A description of the physical condition of the monument as found and as set or reset:
FROM REFERENCE POINTS SET MAG-NAIL w/ 1/4" BRASS TAG STAMPED "PLACER CO SURVEYOR" CENTERED OVER FOUND MONUMENTS.

SURVEYOR'S STATEMENT

This Corner Record was prepared by me or under my direction in conformance with the Professional Land Surveyors' Act on JANUARY 26 2011.

Signed [Signature] L.S. or R.C.E. Number 7887 Expiration Date MAR. 31, 2011



COUNTY SURVEYOR'S STATEMENT

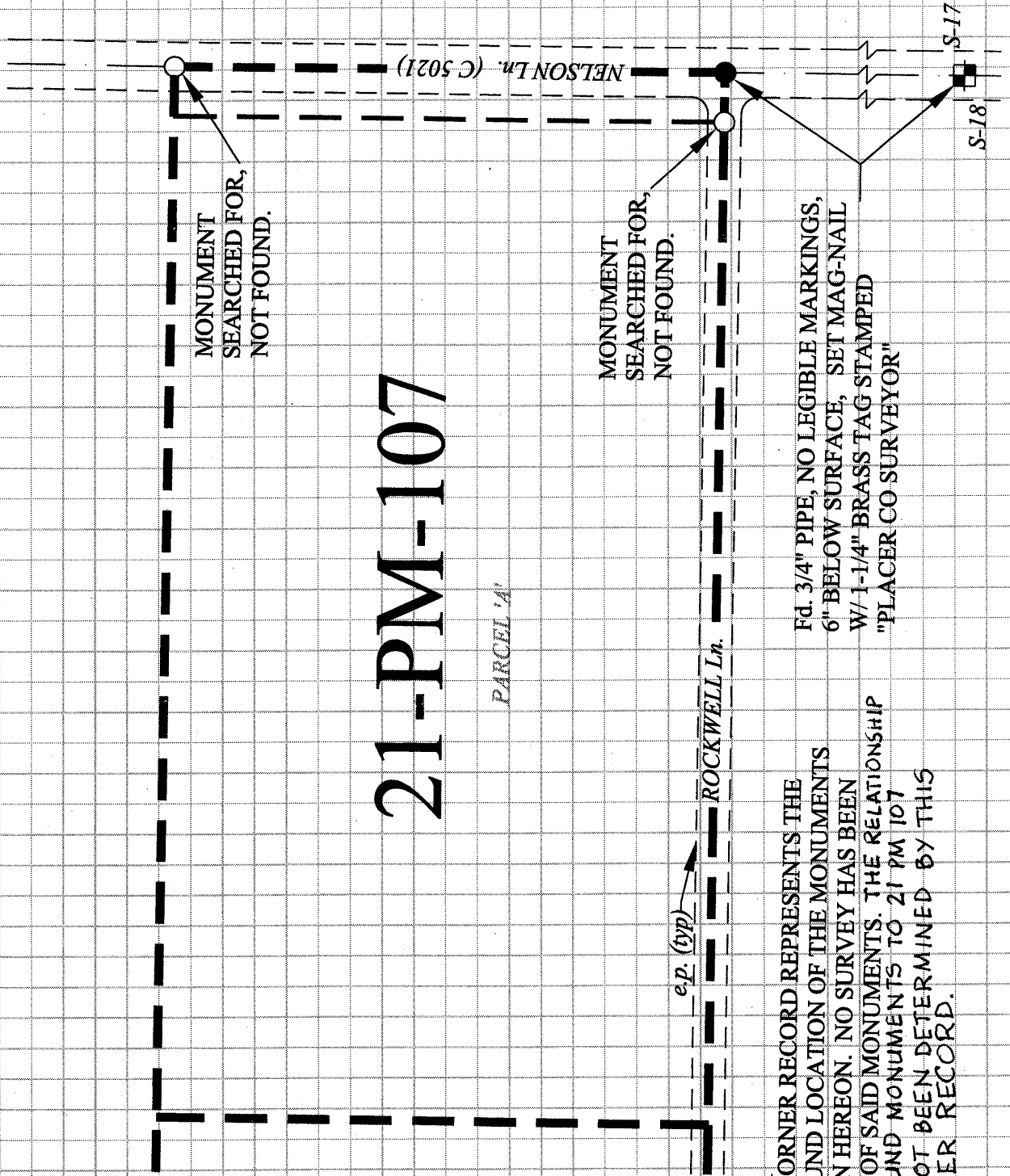
This Corner Record was received \_\_\_\_\_ 20\_\_\_\_ and examined and filed MARCH 8 20 11.

Signed [Signature] Title DEPUTY COUNTY SURVEYOR L.S. or R.C.E. Number 6584 Expiration Date 12-31-11



County Surveyor's Comment \_\_\_\_\_

BOOK 14 CORNER RECORDS PAGE 50



**NOTE:**  
 THIS CORNER RECORD REPRESENTS THE AS FOUND LOCATION OF THE MONUMENTS SHOWN HEREON. NO SURVEY HAS BEEN MADE OF SAID MONUMENTS. THE RELATIONSHIP OF FOUND MONUMENTS TO 21 PM 107 HAS NOT BEEN DETERMINED BY THIS CORNER RECORD.

Fd. 3/4" PIPE, NO LEGIBLE MARKINGS, 6" BELOW SURFACE, SET MAG-NAIL W/ 1-1/4" BRASS TAG STAMPED "PLACER CO SURVEYOR"