

CORNER RECORD

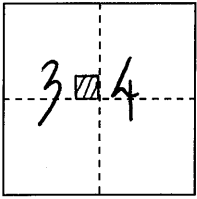
COUNTY OF PLACER, CALIFORNIA

City of _____

Document Number 20110009

Brief Legal Description 6-PM-33

PARCEL MAP No. 70939



S. 34

T. 13 N.

R. 7 E.

CORNER TYPE

Government Corner

Meander

Rancho

Date of Survey OCT. 7. 2010

Control

Property

Other

COORDINATES

(Optional)

N. _____

E. _____

Zone _____ Datum _____

Elev. _____

Corner--- Left as found Found and tagged Established Reestablished Rebuilt

Identification and type of corner found: Evidence used to identify or procedure used to establish or reestablish corner: FOUND MONUMENTS, AS SHOWN, IN TRAVELED WAY OF MT. VERNON RD Per PARCEL MAP No. 70939, Book 6 of PARCEL MAPS, PAGE 33 O.R.P.C. FROM FOUND MONUMENTS ESTABLISHED REFERENCE POINTS PRIOR TO ASPHALT OVERLAY

A description of the physical condition of the monument as found and as set or reset: FROM REFERENCE POINTS SET MAG-NAIL W/ 1/4" BRASS TAG STAMPED "PLACER CO SURVEYOR" CENTERED OVER FOUND MONUMENTS.

SURVEYOR'S STATEMENT

This Corner Record was prepared by me or under my direction in conformance with the Professional Land Surveyors' Act on JANUARY 27 20 11.

Signed [Signature]

L.S. or R.C.E. Number 7887 Expiration Date MAR 31, 2011



COUNTY SURVEYOR'S STATEMENT

This Corner Record was received _____ 20 _____

and examined and filed MARCH 8 20 11.

Signed [Signature] Title Deputy County Surveyor

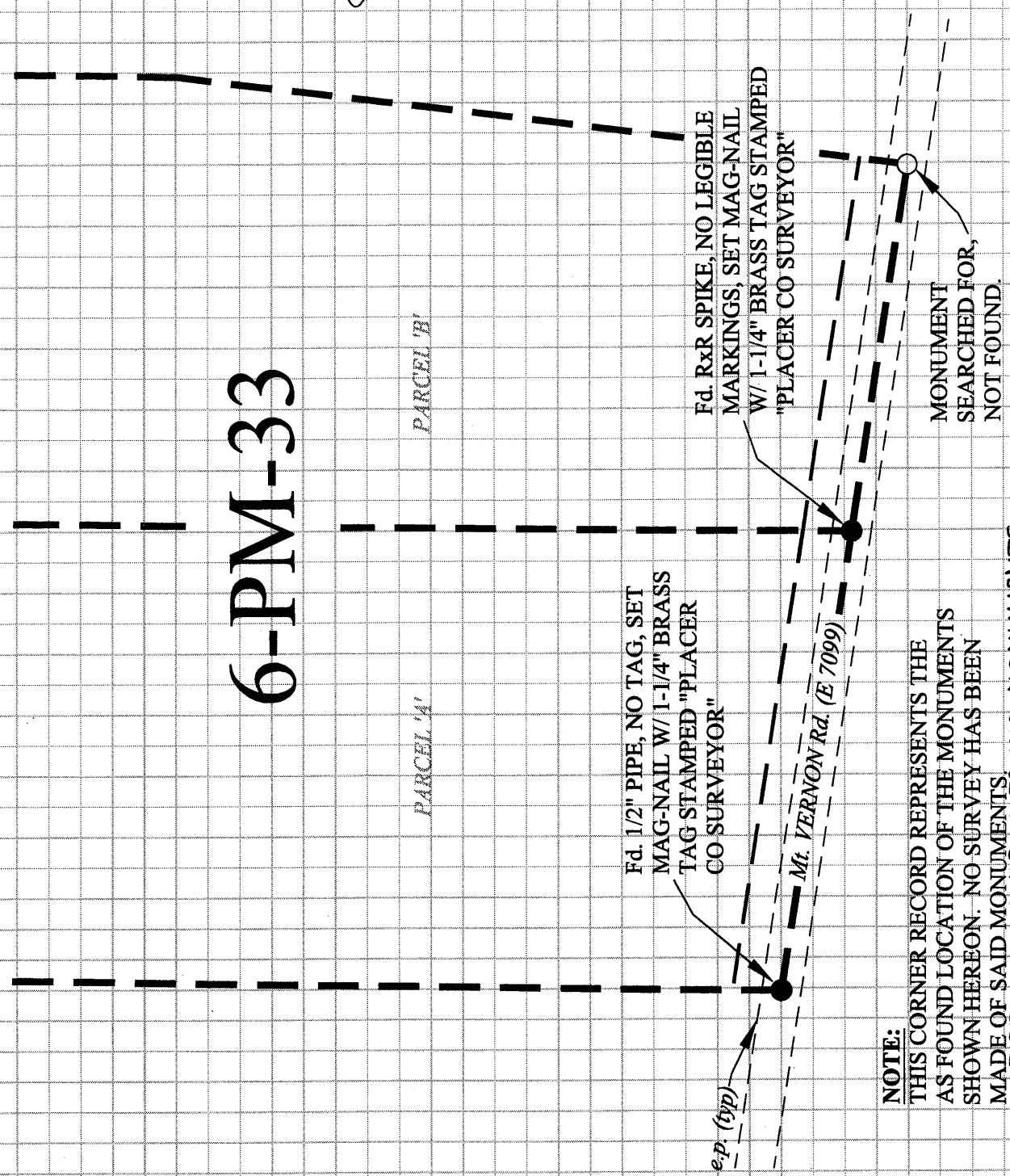
L.S. or R.C.E. Number 6584 Expiration Date 12-31-11



County Surveyor's Comment _____

BOOK 14 CORNER RECORDS PAGE 52

6-PM-33



NOTE:
 THIS CORNER RECORD REPRESENTS THE AS FOUND LOCATION OF THE MONUMENTS SHOWN HEREON. NO SURVEY HAS BEEN MADE OF SAID MONUMENTS. THE RELATIONSHIP OF FOUND MONUMENTS TO 6-PM-33 HAS NOT BEEN DETERMINED BY THIS CORNER RECORD.