

CORNER RECORD

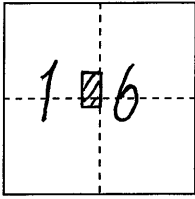
COUNTY OF PLACER, CALIFORNIA

City of _____

Document Number 20110012

Brief Legal Description 12 ROS 23

RECORD of SURVEY No. 1470



S. 16

CORNER TYPE

COORDINATES

(Optional)

T. 14 N.

Government Corner

Control

N. _____

Meander

Property

E. _____

R. 9 E.

Rancho

Other

Zone _____ Datum _____

Date of Survey Oct. 7, 2010

Elev. _____

Corner---

Left as found

Found and tagged

Established

Reestablished

Rebuilt

Identification and type of corner found: Evidence used to identify or procedure used to establish or reestablish corner:

FOUND R*R SPIKES IN TRAVELED WAY of PLACER HILLS R.E. PER RECORD

of SURVEY No. 1470, BOOK 12 of SURVEYS, PAGE 23 O.R.P.C. FROM FOUND

MONUMENTS ESTABLISHED REFERENCE POINTS PRIOR TO ASPHALT OVERLAY

A description of the physical condition of the monument as found and as set or reset:

FROM REFERENCE POINTS SET MAG-NAIL w/ 1/4" BRASS TAG STAMPED

"PLACER CO SURVEYOR" CENTERED OVER FOUND MONUMENTS

SURVEYOR'S STATEMENT

This Corner Record was prepared by me or under my direction

in conformance with the Professional Land Surveyors' Act

on JANUARY 28 2011.

Signed [Signature]

L.S. or R.C.E. Number 7887 Expiration Date MAR. 31, 2011



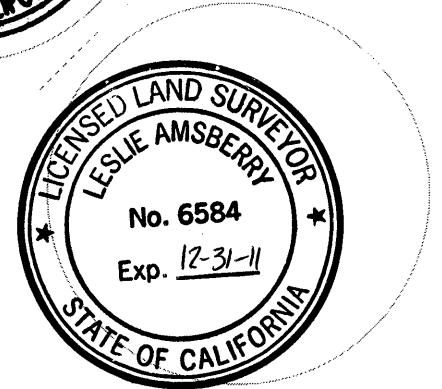
COUNTY SURVEYOR'S STATEMENT

This Corner Record was received _____ 20____

and examined and filed March 8 2011.

Signed [Signature] Title Deputy County Surveyor

L.S. or R.C.E. Number 6584 Expiration Date 12-31-11



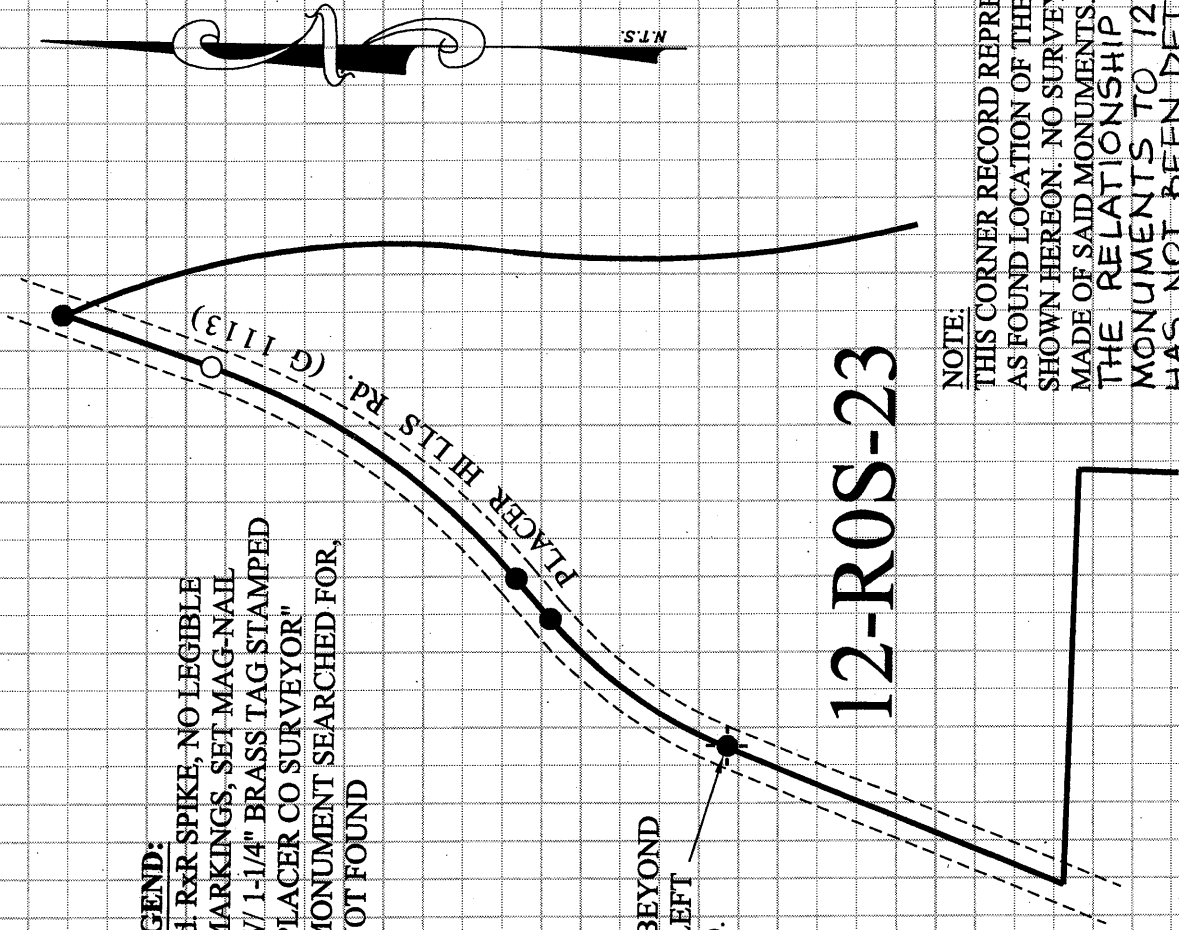
County Surveyor's Comment _____

BOOK 14 CORNER RECORDS PAGE 55

LEGEND:

- = Fd. R&R SPIKE, NO LEGIBLE MARKINGS, SET MAG-NAIL W/ 1-1/4" BRASS TAG STAMPED "PLACER CO SURVEYOR"
- = MONUMENT SEARCHED FOR, NOT FOUND

Fd. R&R SPIKE BEYOND WORK AREA, LEFT UNDISTURBED.



NOTE:
 THIS CORNER RECORD REPRESENTS THE AS FOUND LOCATION OF THE MONUMENTS SHOWN HEREON. NO SURVEY HAS BEEN MADE OF SAID MONUMENTS. THE RELATIONSHIP OF FOUND MONUMENTS TO 12-ROS-23 HAS NOT BEEN DETERMINED BY THIS CORNER RECORD.