

# CORNER RECORD

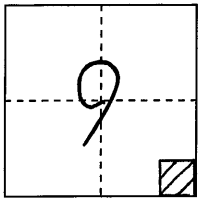
# COUNTY OF PLACER, CALIFORNIA

City of \_\_\_\_\_

Document Number 20110013

Brief Legal Description 20-PM-84

PARCEL MAP No. P73717



S. 9

T. 14 N.

R. 9 E.

## CORNER TYPE

Government Corner

Meander

Rancho

Date of Survey Oct. 7, 2010

Control

Property

Other

## COORDINATES

(Optional)

N. \_\_\_\_\_

E. \_\_\_\_\_

Zone \_\_\_\_\_ Datum \_\_\_\_\_

Elev. \_\_\_\_\_

Corner--- Left as found  Found and tagged  Established  Reestablished  Rebuilt

Identification and type of corner found: Evidence used to identify or procedure used to establish or reestablish corner:

FOUND R-R SPIKES IN TRAVELED WAY OF PLACER HILLS RD. PER PARCEL  
MAP No. P73717, Book 20 of PARCEL MAPS, PAGE 84 O.R.P.C. FROM  
FOUND MONUMENTS ESTABLISHED REFERENCE POINTS PRIOR TO ASPHALT OVERLAY

A description of the physical condition of the monument as found and as set or reset:

FROM REFERENCE POINTS SET MAG-NAIL W/ 1/4" BRASS TAG STAMPED "PLACER  
CO SURVEYOR" CENTERED OVER FOUND MONUMENT.

## SURVEYOR'S STATEMENT

This Corner Record was prepared by me or under my direction  
 in conformance with the Professional Land Surveyors' Act

on February 1 2011.

Signed [Signature]

L.S. or R.C.E. Number 7887 Expiration Date MAR 31, 2011



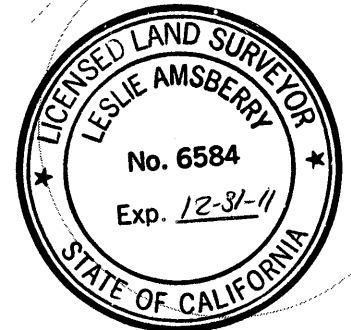
## COUNTY SURVEYOR'S STATEMENT

This Corner Record was received \_\_\_\_\_ 20\_\_\_\_

and examined and filed MARCH 8 2011.

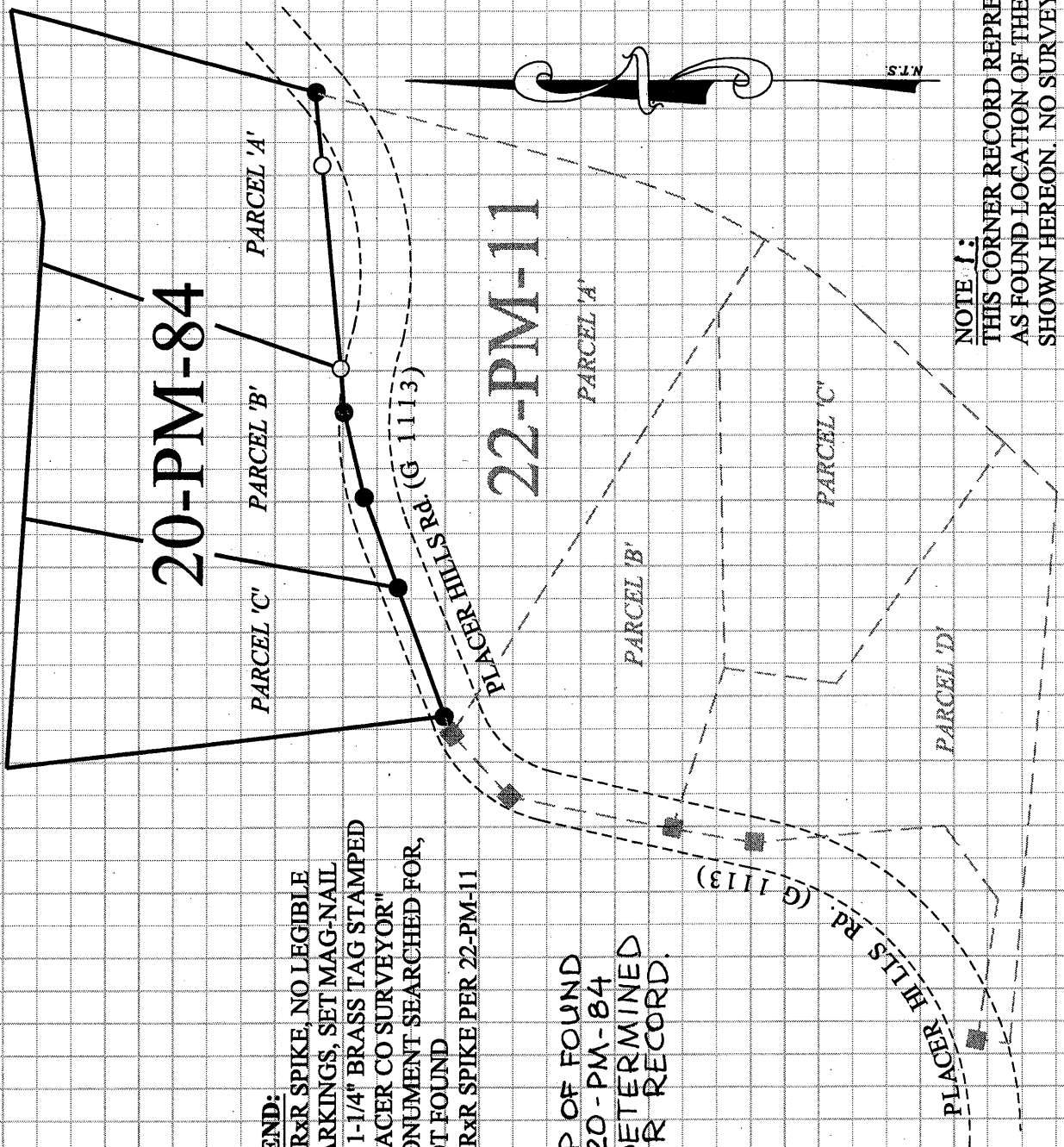
Signed [Signature] Title DEPUTY County Surveyor

L.S. or R.C.E. Number 6584 Expiration Date 12-31-11



County Surveyor's Comment \_\_\_\_\_

BOOK 14 CORNER RECORDS PAGE 56



**LEGEND:**

- = Fd. R&R SPIKE, NO LEGIBLE MARKINGS, SET MAG-NAIL W/ 1-1/4" BRASS TAG STAMPED "PLACER CO SURVEYOR"
- = MONUMENT SEARCHED FOR, NOT FOUND
- = Fd. R&R SPIKE PER 22-PM-11

**NOTE 2:**

THE RELATIONSHIP OF FOUND MONUMENTS TO 20-PM-84 HAS NOT BEEN DETERMINED BY THIS CORNER RECORD.

**NOTE 1:**

THIS CORNER RECORD REPRESENTS THE AS FOUND LOCATION OF THE MONUMENTS SHOWN HEREON. NO SURVEY HAS BEEN MADE OF SAID MONUMENTS.