

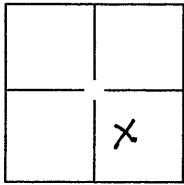
CORNER RECORD

Document Number 20100032

City of N/A

County of PLACER, California

Brief Legal Description A PORTION OF THE SE 1/4 SEC. 30, T13N, R7E, MDBEM
THE NORTH LINE OF PARCEL C PER BK 10 PM 41



SEC 30
T13N
R7E

CORNER TYPE

Government Corner Control
 Meander Property
 Rancho Other

Date of Survey AUGUST 3, 2010

COORDINATES(Optional)

N. _____
 E. _____
 Zone N/A NAD27 NAD83
 NAD83 Epoch _____
 Elev. _____
 Vert. Datum: NGVD29 NADV88
 Meas. Units: Metric Imperial

Corner - Left as found Found and tagged Established Reestablished Rebuilt

Identification and type of corner found: Evidence used to identify or procedure used to establish or reestablish the corner:

FOUND ORIGINAL MONUMENTATION PER BK 10 PM 41
AND USED TO RE-ESTABLISH THE NORTH LINE
OF PARCEL C PER BK 10 PM 41

A description of the physical condition of the monument as found and as set or reset:

SET 1/2" REBAR & TAG L.S. 4600 AT RANDOM
DISTANCES ON THE NORTH LINE OF PARCEL C.

SURVEYOR'S STATEMENT

This Corner Record was prepared by me or under my direction in conformance with

the Land Surveyor's Act on AUGUST 25, 2010

Signed [Signature] P.L.S. or R.C.E. No.: L.S. 4600



COUNTY SURVEYOR'S STATEMENT

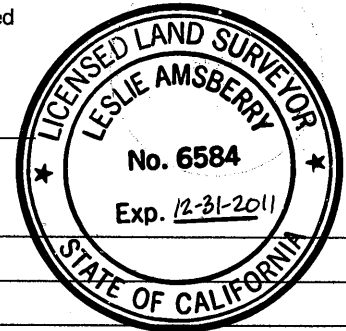
This Corner Record was received SEPTEMBER 2, 2010 and examined

and filed APRIL 1, 2011

Signed [Signature] P.L.S. or R.C.E. No.: 6584

Title Deputy County Surveyor

County Surveyor's Comment _____



BOOK 14 CORNER RECORDS PAGE 59

SURVEYOR'S NOTE:

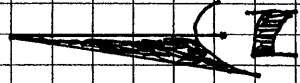
IN MY OPINION THE SHOWN DIFFERENCES IN BEARING AND DISTANCE DO NOT CONSTITUTE A MATERIAL DISCREPANCY.

A PORTION OF PARCEL C
 PARCEL MAP NO. 72143
 BK 10 PM PG 41

JOHN P. MATTHEW Co.
 6310 PAIRY COURT
 SACRAMENTO, CA 95831
 (916) 768-3266
 AUGUST, 2010

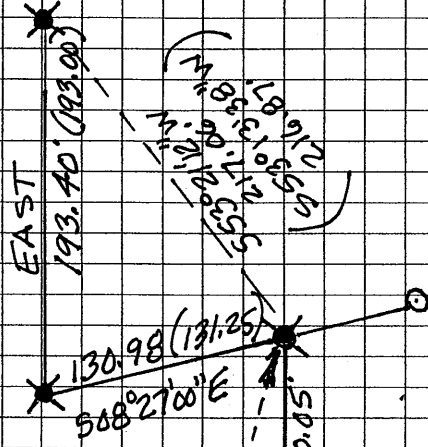
PARCEL B
 (684.31')
 684.29'

PARCEL C



PARCEL A
 N00°07'53"E 490.30'
 (N00°07'53"E 490.27')

GARDEN BAR ROAD



LEGEND

- - SET 1/2" REBAR TAGGED "L.S. 4600"
- ⊗ - FD. 3/4" IRON PIPE TAGGED "L.S. 3636"
- - NOTHING FOUND OR SET
- () - RECORD PER BK 10 PM 41