

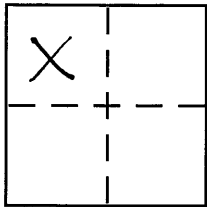
CORNER RECORD

Document Number 20110027

City of _____

County of PLACER, California

Brief Legal Description LOT 129, CARNELIAN HEIGHTS UNIT No. 3, SUBDIVISION, H/MAPS/87 ORPC.



SEC. 28
T. 16 N.
R. 17 E.
M.D.B.#M.

CORNER TYPE

Government Corner Control
Meander Property
Rancho Other
Date of Survey 6-17-2011

COORDINATES (Optional)

N. _____
E. _____
Zone _____ NAD27 NAD83
NAD83 Epoch _____
Elev. _____
Vert. Datum: NGVD29 NAVD88
Meas. Units: Metric Imperial

Corner - Left as found Found and tagged Established Reestablished Rebuilt

Identification and type of corner found: Evidence used to identify or procedure used to establish or reestablish the corner:

USED RECORD DIMENSIONS AND FOUND MONUMENTS PER H/MAPS/87
O.R.P.C. TO REESTABLISH THE MISSING CORNER OF LOT 129,
AS SHOWN ON PLAT.

A description of the physical condition of the monument as found and as set or reset:

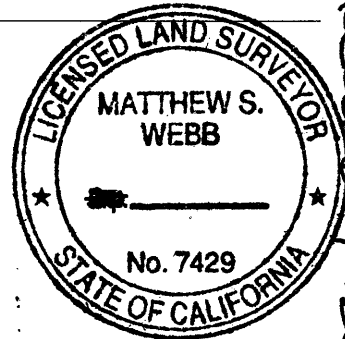
Ø SET 5/8" REBAR WITH YELLOW PLASTE CAP LS-7429
• FOUND MONUMENT AS SHOW ON PLAT

SURVEYOR'S STATEMENT

This Corner Record was prepared by me or under my direction in conformance with

the Land Surveyor's Act on June 22, 2011

Signed [Signature] P.L.S. or R.C.E. No. 7429



COUNTY SURVEYOR'S STATEMENT

This Corner Record was received _____

and examined and filed JUNE 29, 2011

Signed Leslie Amberry P.L.S. or R.C.E. No. 6584

Title DEPUTY COUNTY SURVEYOR



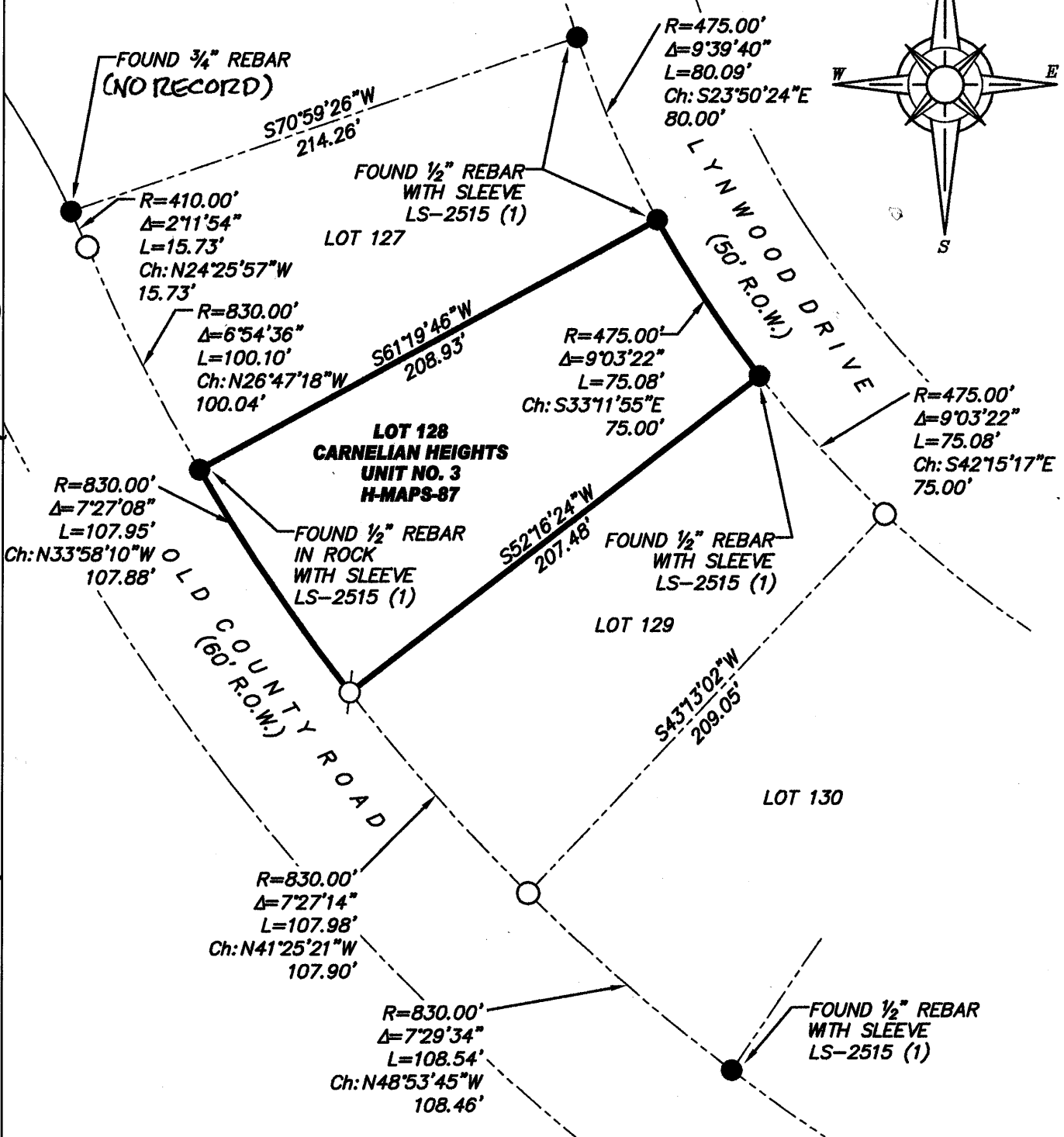
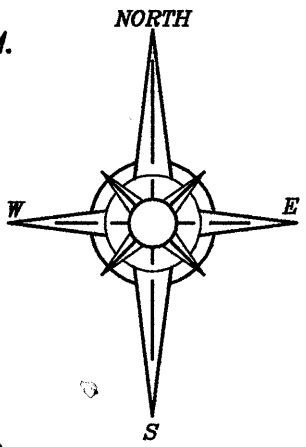
County Surveyor's Comment _____

BOOK 14, CARNELIAN RECORDS, PAGE 62

PLAT OF SURVEY

LOT 129, CARNELIAN HEIGHTS UNIT NO.3 SUBDIVISION, BOOK H OF MAPS AT PAGE 87, OFFICIAL RECORDS PLACER COUNTY, CALIFORNIA. A PORTION OF SECTION 28, TOWNSHIP 16 N., RANGE 17 E., M.D.B. & M.

SCALE 1" = 60' DATE OF SURVEY 6/17/2011



BOOK 14, CORNER RECORDS, PAGE 602

J/N 1921.00